

SECTION 6

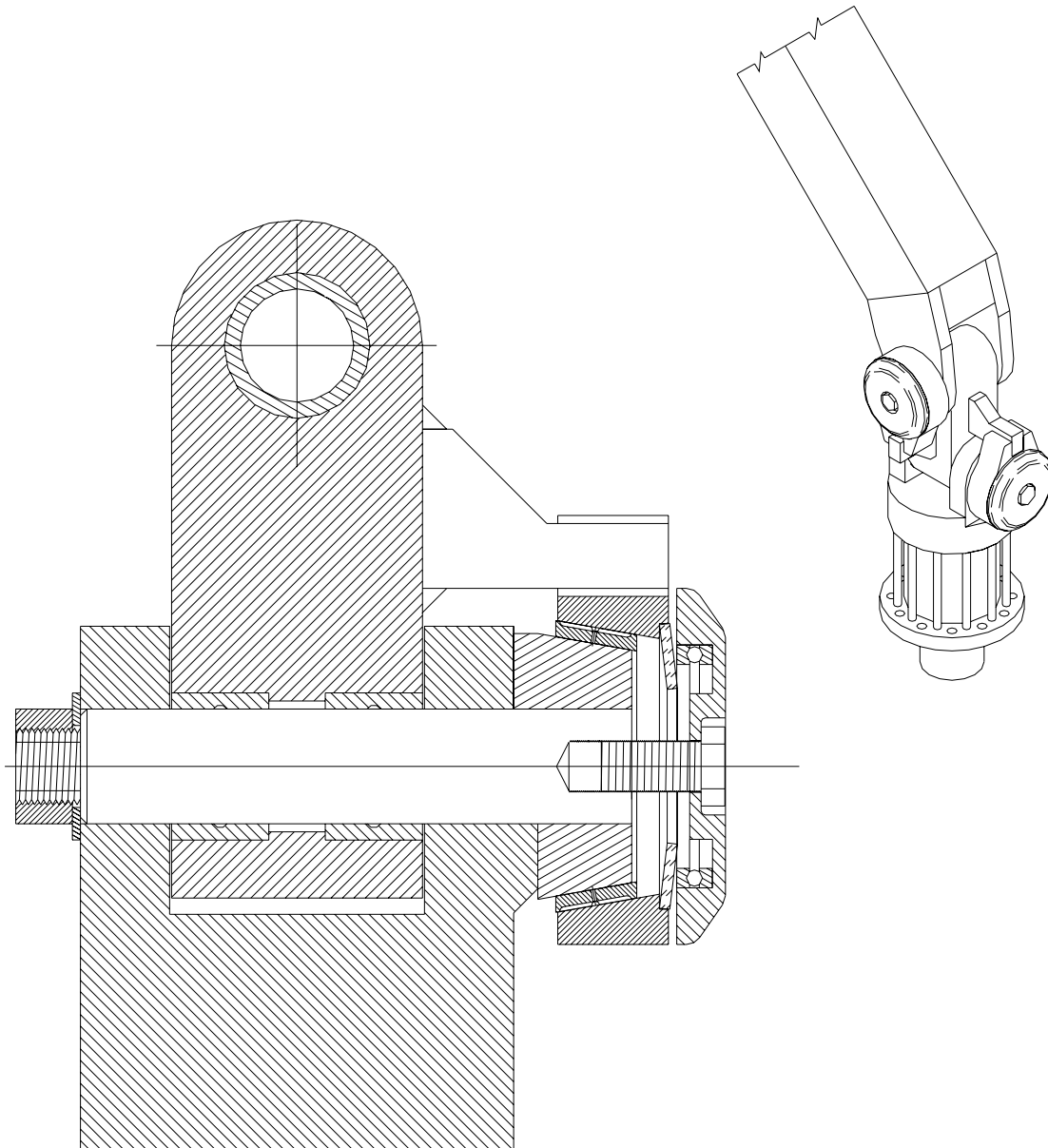
450 SERIES

6-2	<u>Snubber Assembly - Parts</u>
6-3	<u>O.E.M. Pinhead Styles</u>
6-4	<u>Stick Boom Mount</u>
6-5	<u>Rotate Yoke Mount</u>
6-5	<u>Service and Adjustment</u>
6-6	<u>B3450</u>
6-7	<u>B3450-1</u>
6-8	<u>B3350-2</u>
6-9	<u>B3450-3</u>
6-10	<u>B3450-4</u>
6-11	<u>B3450-5</u>
6-12	<u>B3450-6</u>
6-13	<u>B3450-7</u>
6-14	<u>B3450-8</u>
6-15	<u>B3450-9</u>
6-16	<u>B3450-10</u>
6-17	<u>B3450-11</u>
6-18	<u>B3450-12</u>
6-19	<u>B3450-13</u>

EXTERNAL MOUNT

SNUBBER ASSEMBLY – PARTS

INDEXATOR REPLACEMENT – AV11S, GV11S, GV104S
AV12S, GV12S, GV15S
AV14S, GV14S, GV17S

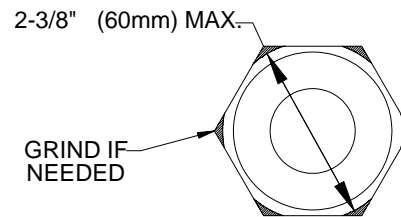


MOUNTING AND OPERATIONAL INSTRUCTIONS

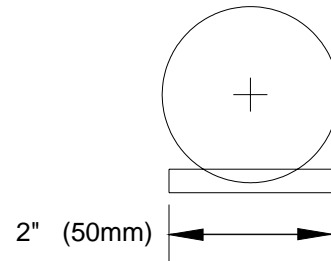
O.E.M. PINHEAD STYLES

Original pin heads must be smaller than 2 1/2 " (63 mm) to allow passage of pin through core during attachment disassembly.

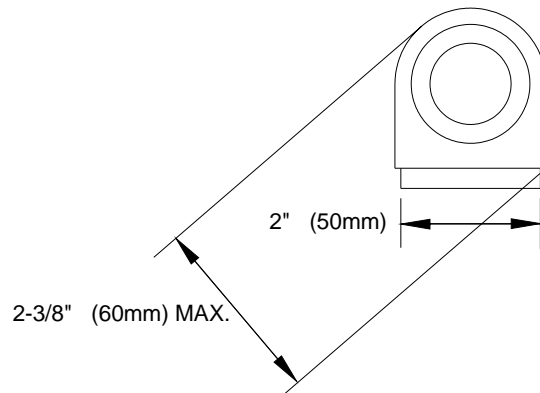
- A)** Hex style pin heads 2 1/2" across corners or larger must have corners of hex ground to 2 3/8" (60 mm) or less.



- B)** Pin heads with a milled flat area rest against external key stock to prevent pin from turning during assembly. This key stock must be short enough, 2" (50 mm) maximum, to fit under core when the core is welded into position.



- C)** Pinheads with a flat anchor larger than 2 1/2" (63 mm) can be trimmed and ground. *NOTE* a flat portion must be retained to stop pin from turning during assembly. Key stock stop maximum 2" (50 mm) long allowing core to be welded into position.

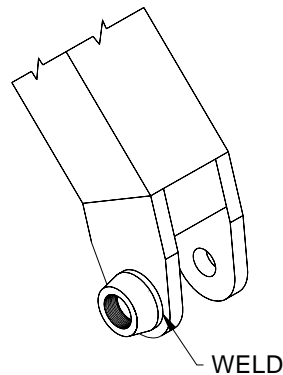


EXTERNAL MOUNT

MOUNTING AND OPERATIONAL INSTRUCTIONS

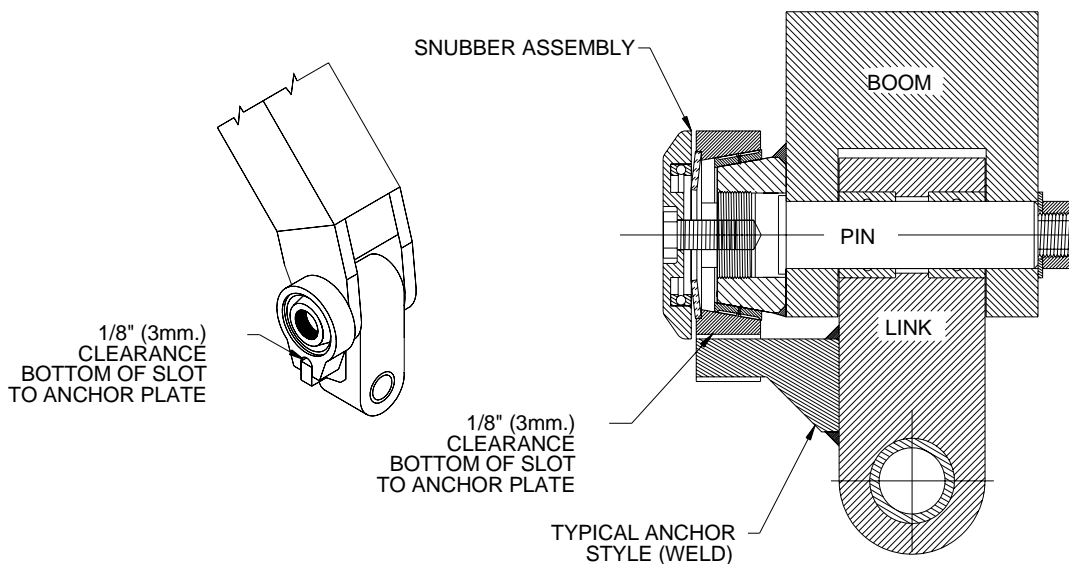
STICK BOOM MOUNT

- 1) Center snubber core around head of pin and tack weld into position. Ensure head of pin can travel through center of core without interference. Protect taper surface of core from weld splatter and weld core to the boom with 7018 low hydrogen rod or ARCTEC 223 XC, minimum 2 passes.



- 2) Assemble snubber with slot style housing facing down parallel to link. An anchor must be cut from 1" (NORTH AMERICA) 25 mm (EUROPE) steel plate and welded to link. Maintain 1/8" (3 mm) clearance between bottom of housing slot and top of anchor, allowing full engagement of anchor.

**Ensure anchor does not interfere with rotate yoke & crane nose during side to side travel of attachment.



MOUNTING AND OPERATIONAL INSTRUCTIONS

AV11S, GV11S, AV12S, GV12S, GV15S, GV104S, AV14S, GV14S, GV17S

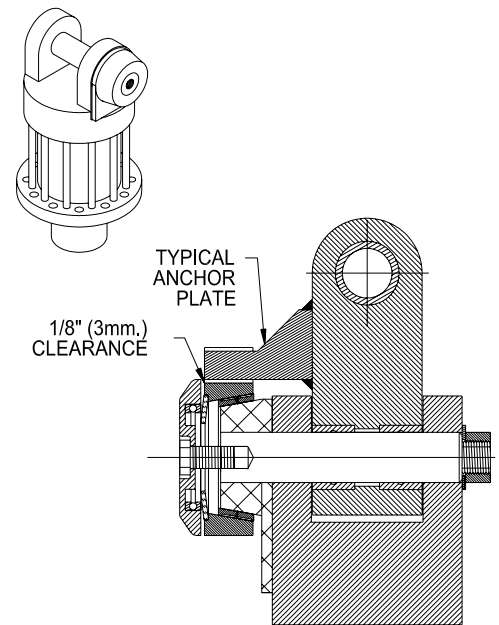
ROTATE YOKE MOUNT

- 3) Remove original pin. Install core and pin assembly with inside flat surface of core mating to flat edged pin lock on yoke ear. *NOTE* some rotators may require removal of name plate or grinding of ear to ensure full contact of core and yoke ear.

- 4) Grind lock plate to fit top of rotate yoke, allow tight fit.

- 5) Cut housing anchor from 1" plate (NORTH AMERICA) 25 mm (EUROPE) and weld to link bar. Allow 1/8" (3 mm) clearance between bottom of housing slot and bottom of anchor.

OPTIONAL: Install QUADCO solid steel link.



SERVICE AND ADJUSTMENT

- During final assembly of snubber apply LOCTITE 620, or equivalent to core and inner surface of friction sleeve
- Apply liberal amount of MOLY based grease to outer surface of friction sleeve and thrust bearing.**
- ** For B3T-1175 composite sleeve, install dry.
- To set tension, tighten end-cap bolt.

CAUTION: Only tension snubber to maintain adequate control of attachment, dependant upon application and attachment weight.
OVER TENSIONING of snubber reduces friction sleeve life.

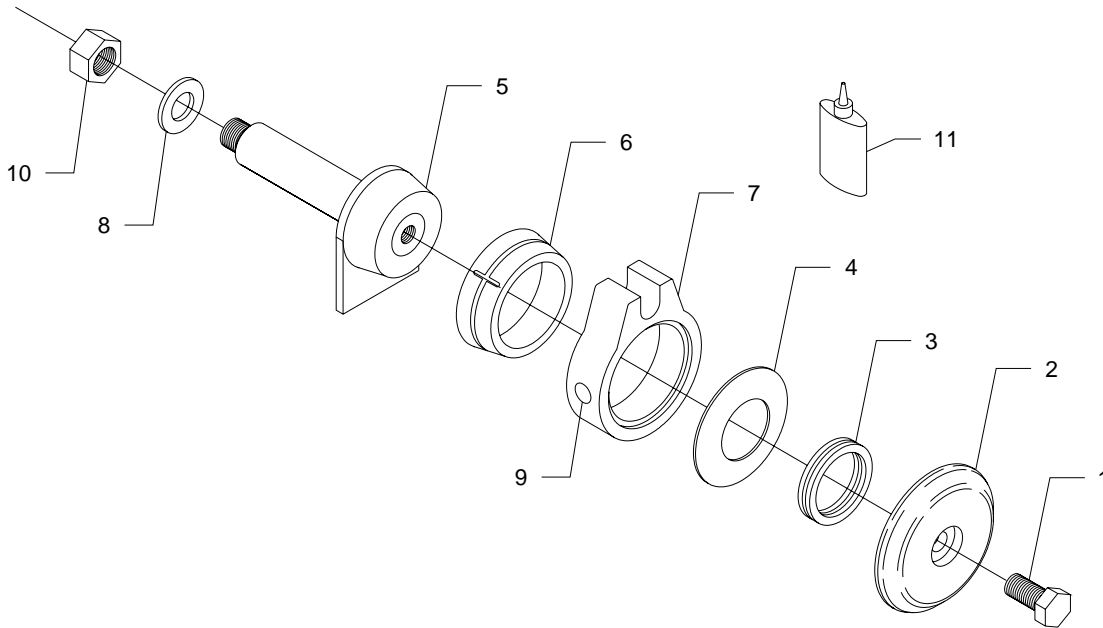
IMPORTANT: All service points on the snubber should be greased every 10 hours.
(Friction Sleeve: grease B3T-1015G only)

Greases with 5% - 6% MOLY are recommended:
Military Spec. MIL G23549C
-Lubriplate 176 5⁰F./-15⁰C.
-Lubriplate 3000 15⁰F./-9.5⁰C.
-Lubriplate 3000w -30⁰F./-34.5⁰C.
-or EQUIVALENT

EXTERNAL MOUNT

B3450

USE WITH INDEXATOR ROTATORS
AV11S, GV11S, AV12S, GV12S, GV15S, GV104S, AV14S, GV14S, GV17S
NORTH AMERICA ONLY

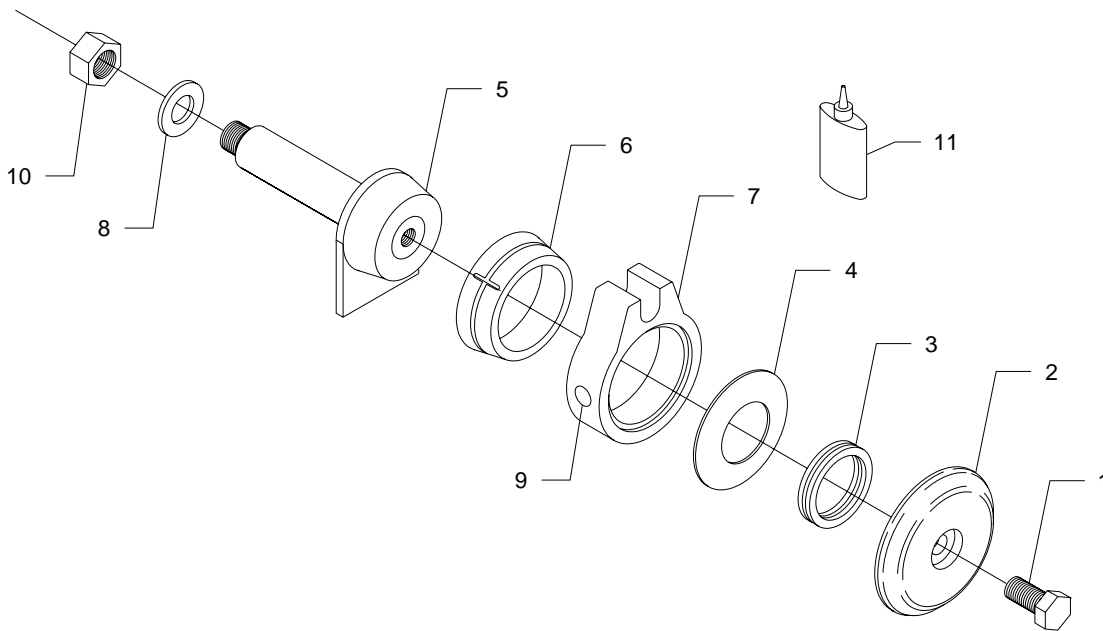


ITEM	PART#	DESCRIPTION	QTY
1	B3T-440	BOLT (M16 x 1.5 x 50 mm LONG –10.9)	1
2	B3T-430	END CAP	1
3	B3T-1035	BEARING	1
4	B3T-1030	SPRING WASHER, 1 ST CONCAVE TO HOUSING, 2&3 CONCAVE – FACE TO FACE	3
5	B3T-370	CORE ASS'Y (45 mm PIN O.D.)	1
6	B3T-1015G	FRICITION SLEEVE (ZINC ALLOY ZA12)	1
OPT.	B3T-1175	FRICITION SLEEVE (COMPOSITE MATERIAL)	1
7	B3T-1020	HOUSING (1.032" SLOT)	1
8	B3T-450	WASHER	1
9	B3T-1130	ZERK	2
9	B3T-1190	PLUG, USE WITH B3T-1175 COMPOSITE SLEEVE	2
10	B3T-535	NUT (M30 x 1.5 NYLOCK JAMNUT)	1
11	B3T-575	SLEEVE RETAINER LOCTITE 620 OR EQUIVALENT	1

EXTERNAL MOUNT

B3450-1

USE WITH INDEXATOR ROTATORS
AV11S, GV11S, AV12S, GV12S, GV15S, GV104S, AV14S, GV14S, GV17S
EUROPE ONLY



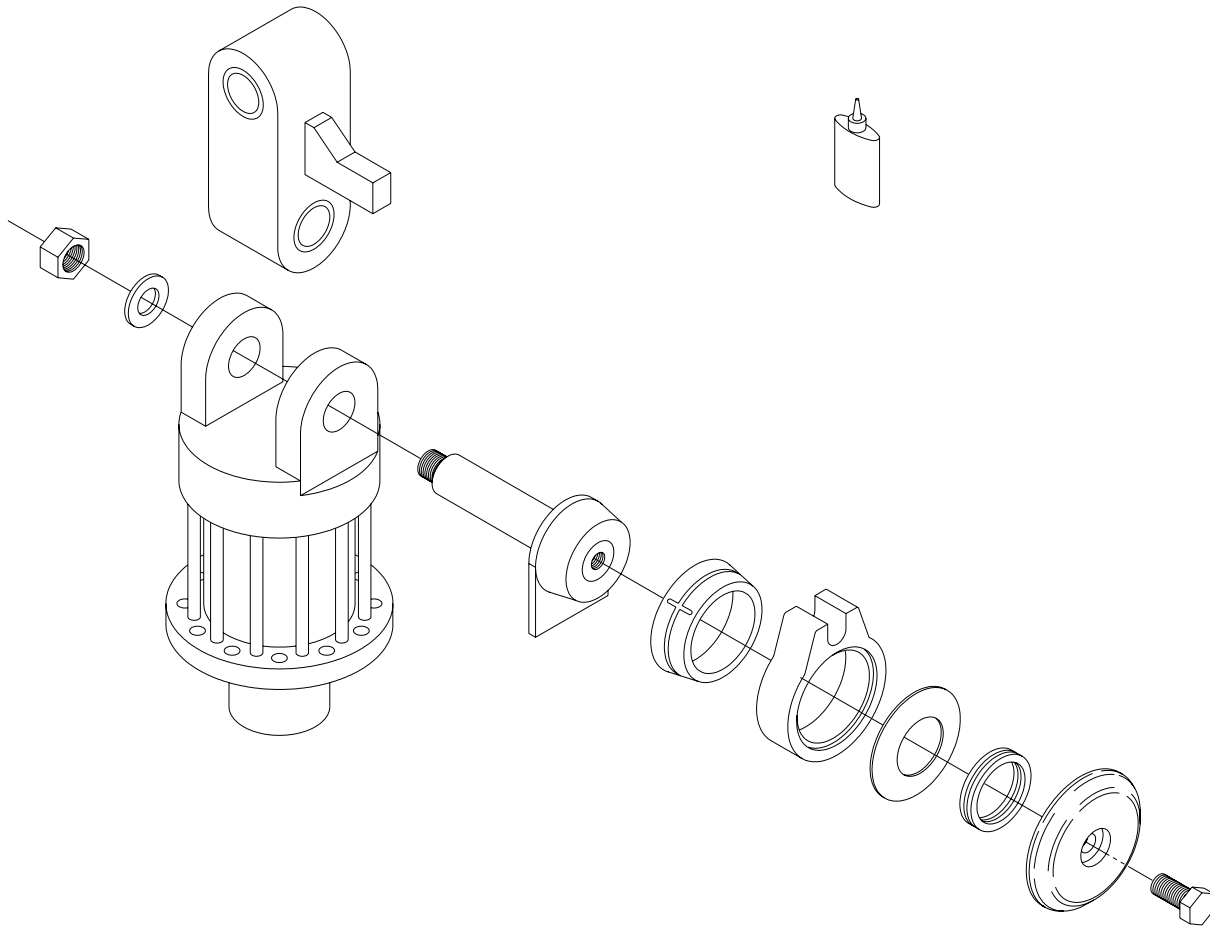
ITEM	PART#	DESCRIPTION	QTY
1	B3T-440	BOLT (M16 x 1.5 x 50 mm LNG. -10.9)	1
2	B3T-430	END CAP	1
3	B3T-1035	BEARING	1
4	B3T-1030	SPRING WASHER, 1 ST CONCAVE TO HOUSING, 2&3 CONCAVE - FACE TO FACE	3
5	B3T-370	CORE ASS'Y (45 mm PIN O.D.)	1
6	B3T-1015G	FRICTION SLEEVE (ZINC ALLOY ZA12)	1
OPT.	B3T-1175	FRICTION SLEEVE (COMPOSITE MATERIAL)	1
7	B3T-520	HOUSING (25mm SLOT)	1
8	B3T-450	WASHER	1
9	B3T-1130	ZERK	2
9	B3T-1190	PLUG, USE WITH B3T-1175 COMPOSITE SLEEVE	2
10	B3T-535	NUT (M30 x 1.5 NYLOCK JAMNUT)	1
11	B3T-575	SLEEVE RETAINER LOCTITE 620 OR EQUIVALENT	1

EXTERNAL MOUNT

450 SERIES

B3450- 2

NORTH AMERICA - USE WITH INDEXATOR ROTATORS
 AV11S, GV11S, AV12S, GV12S, GV15S, GV104S, AV14S, GV14S, GV17S
 LINK 100 mm WIDE @ ROTATOR EARS, 45 mm BUSHING I.D.
 LINK 80 mm WIDE @ CRANE NOSE, 35 mm BUSHING I.D.
 1 DIRECTION, SIDE TO SIDE

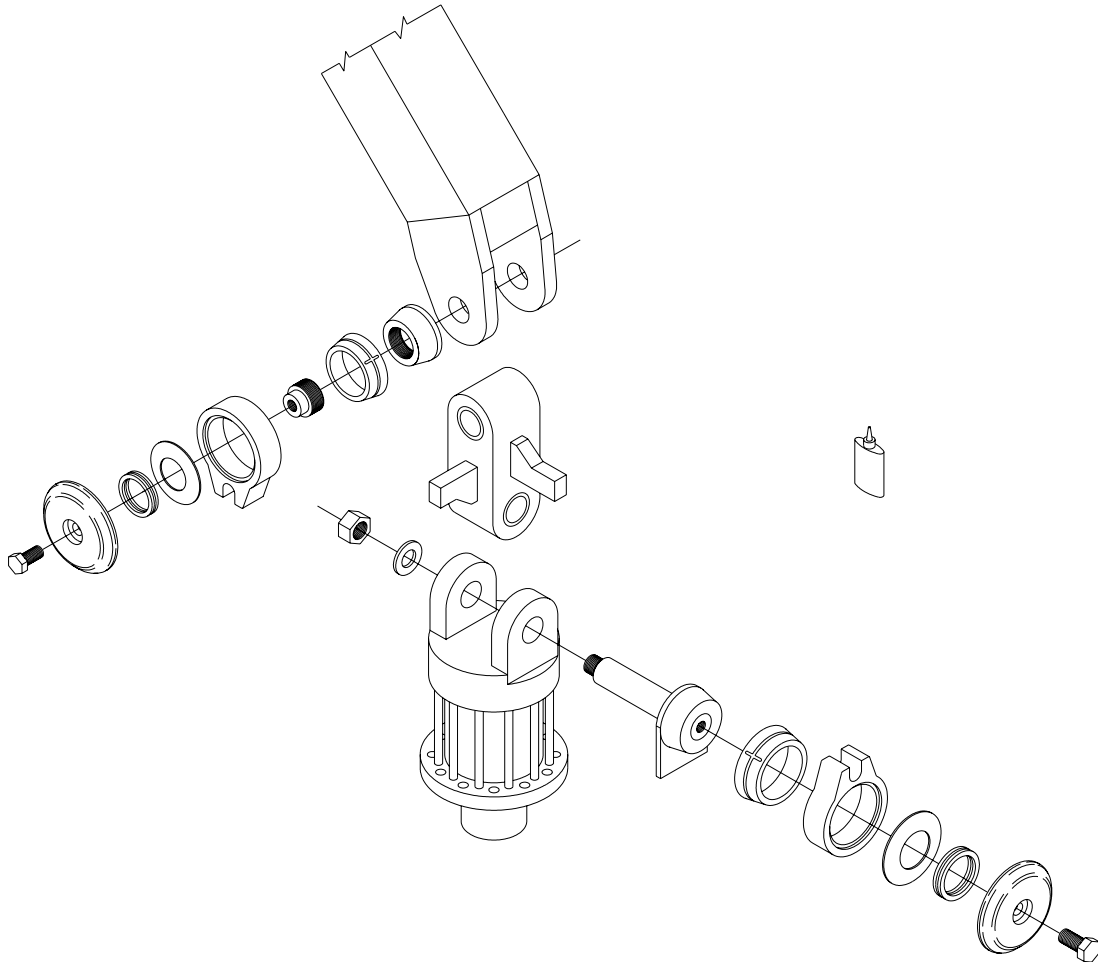


ITEM	PART#	DESCRIPTION	QTY
1	B3450	SNUBBER ASSEMBLY, 45 mm PIN (1.032" SLOT)	1
2	B3T-480	LINK, 100/45 mm – 100/35 mm 190 PIN CENTERS	1
	B3T-470	BUSHING 45 mm I.D.	2
	B3T-810	BUSHING 35 mm I.D.	2

EXTERNAL MOUNT

B3450- 3

NORTH AMERICA - USE WITH INDEXATOR ROTATORS
 AV11S, GV11S, AV12S, GV12S, GV15S, GV104S, AV14S, GV14S, GV17S
 LINK 100 mm WIDE @ ROTATOR EARS, 45 mm BUSHING I.D.
 LINK 80 mm WIDE @ CRANE NOSE, 35 mm BUSHING I.D.



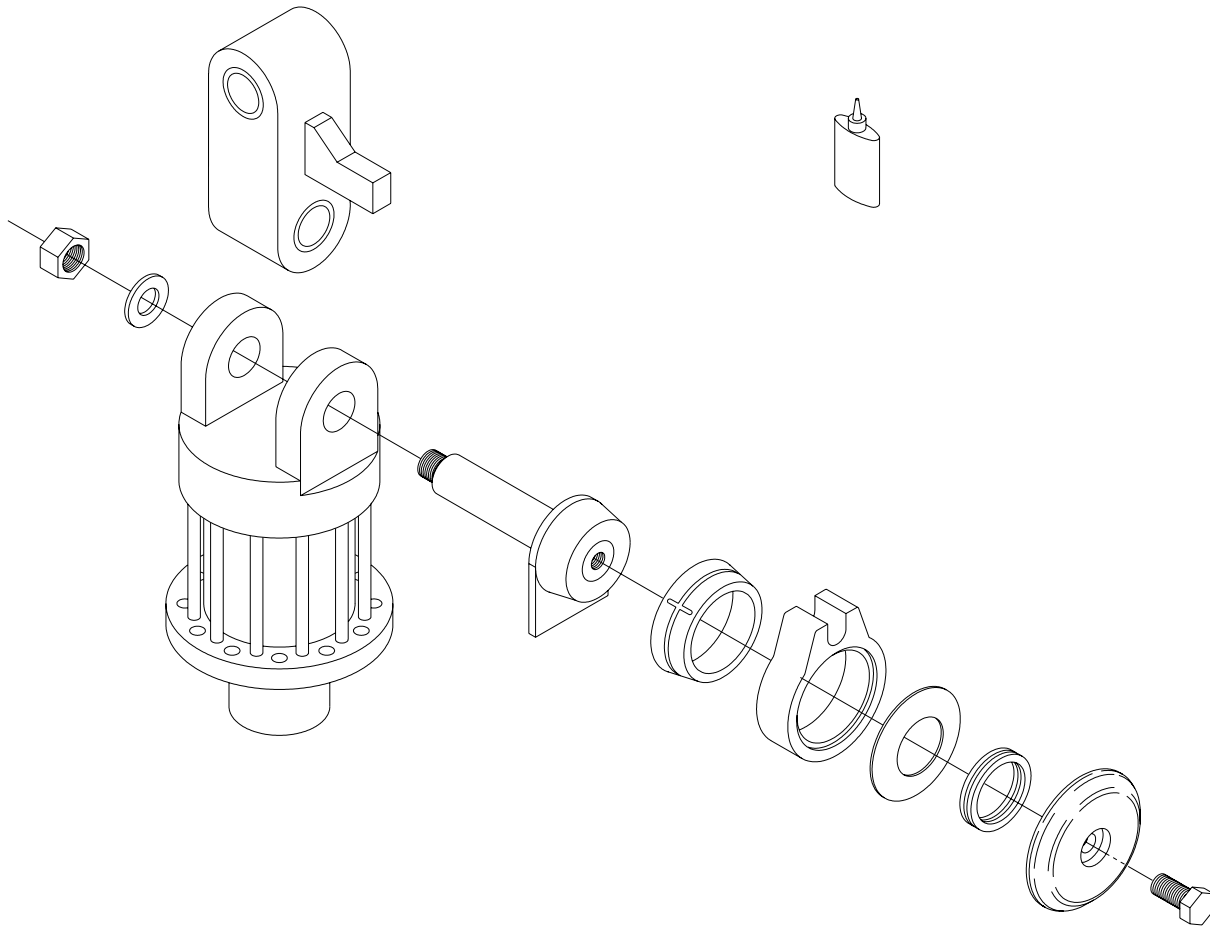
ITEM	PART#	DESCRIPTION	QTY
1	B3450	SNUBBER ASSEMBLY, 45 mm PIN (1.032" SLOT)	1
2	B3T-480	LINK, 100/45 mm – 80/35 mm 190 PIN CENTERS	1
	B3T-470	BUSHING, 45 mm I.D.	2
	B3T-810	BUSHING, 35 mm I.D.	2
3	B3300	SNUBBER ASEMBLY, WELD ON (1.032" SLOT) 16mm BOLT	1

EXTERNAL MOUNT

450 SERIES

B3450- 4

NORTH AMERICA - USE WITH INDEXATOR ROTATORS
 AV11S, GV11S, AV12S, GV12S, GV15S, GV104S, AV14S, GV14S, GV17S
 LINK 100 mm WIDE @ ROTATOR EARS, 45 mm BUSHING I.D.
 LINK 100 mm WIDE @ CRANE NOSE, 45 mm BUSHING I.D.
 1 DIRECTION, SIDE TO SIDE



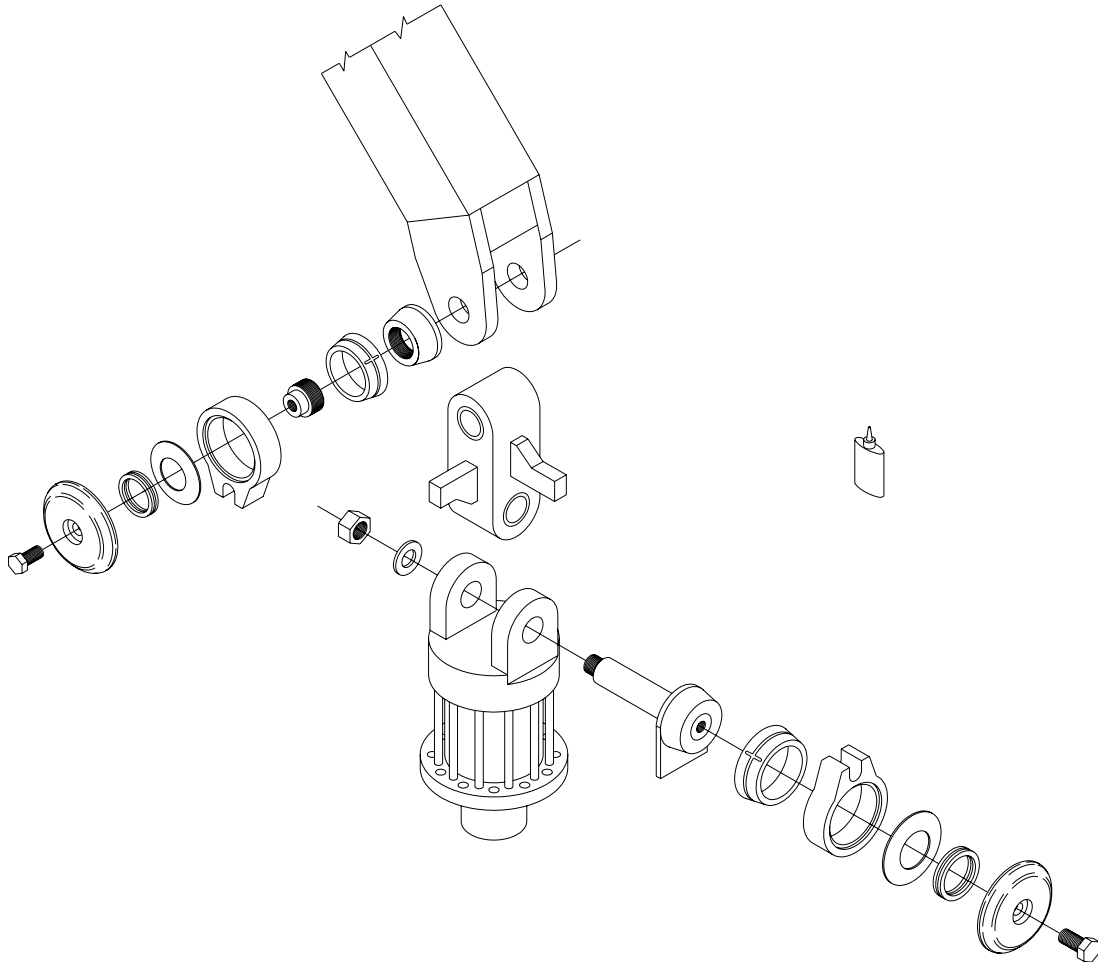
ITEM	PART#	DESCRIPTION	QTY
1	B3450	SNUBBER ASSEMBLY, 45 mm PIN (1.032" SLOT)	1
2	B3T-485	LINK, 100/45 mm – 100/45 mm 190 PIN CENTERS	1
	B3T-470	BUSHING, 45 mm I.D.	4

EXTERNAL MOUNT

450 SERIES

B3450- 5

NORTH AMERICA - USE WITH INDEXATOR ROTATORS
 AV11S, GV11S, AV12S, GV12S, GV15S, GV104S, AV14S, GV14S, GV17S
 LINK 100 mm WIDE @ ROTATOR EARS, 45 mm BUSHING I.D.
 LINK 100 mm WIDE @ CRANE NOSE, 45 mm BUSHING I.D.



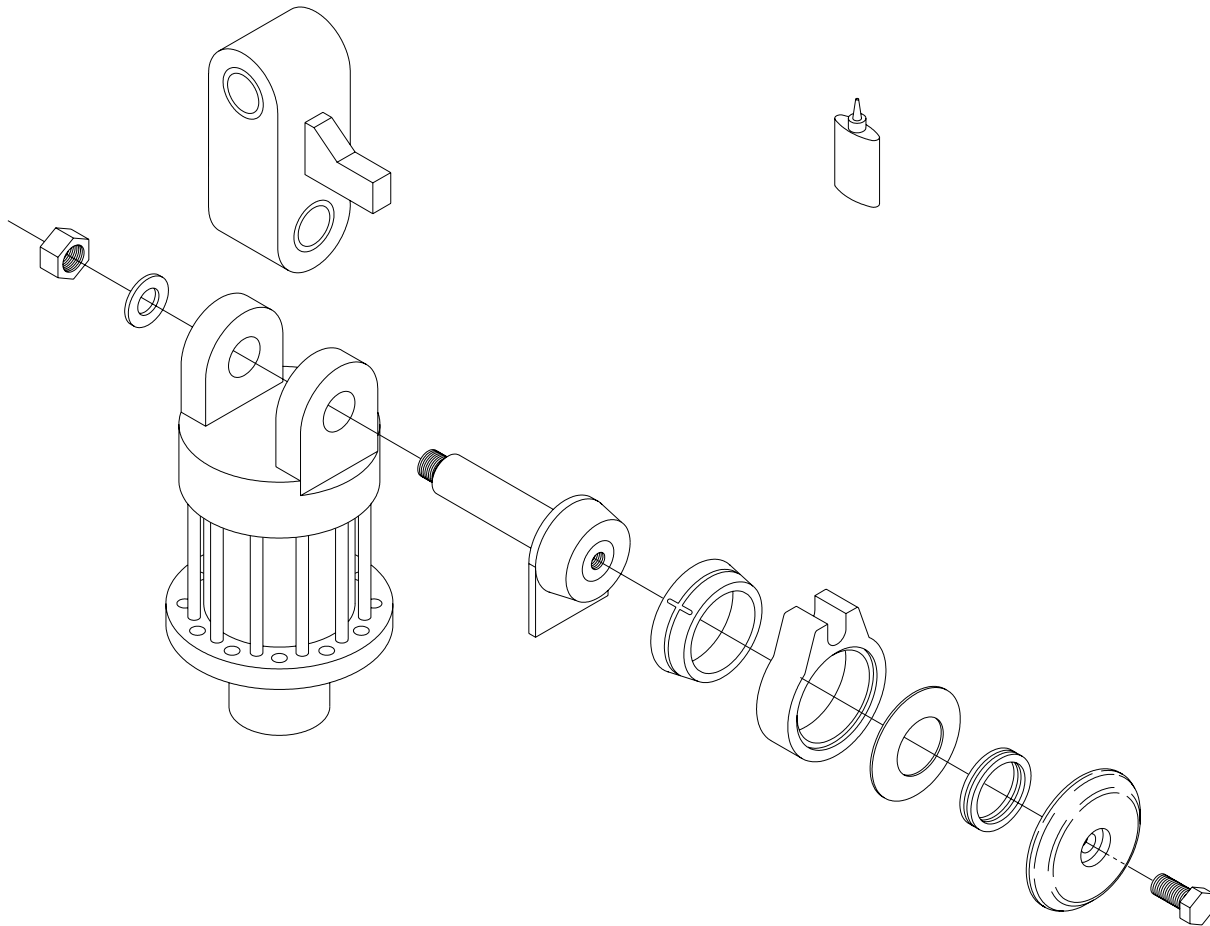
ITEM	PART#	DESCRIPTION	QTY
1	B3450	SNUBBER ASSEMBLY, 45 mm PIN (1.032" SLOT)	1
2	B3T-485	LINK, 100/45 mm – 100/45 mm 190 PIN CENTERS	1
	B3T-470	BUSHING, 45 mm I.D.	4
3	B3300	SNUBBER ASEMBLY, WELD ON (1.032" SLOT) 16mm BOLT	1

EXTERNAL MOUNT

450 SERIES

B3450- 6

NORTH AMERICA - USE WITH INDEXATOR ROTATORS
 AV11S, GV11S, AV12S, GV12S, GV15S, GV104S, AV14S, GV14S, GV17S
 LINK 100 mm WIDE @ ROTATOR EARS, 45 mm BUSHING I.D.
 LINK 100 mm WIDE @ CRANE NOSE, 45 mm BUSHING I.D.
 1 DIRECTION, SIDE TO SIDE

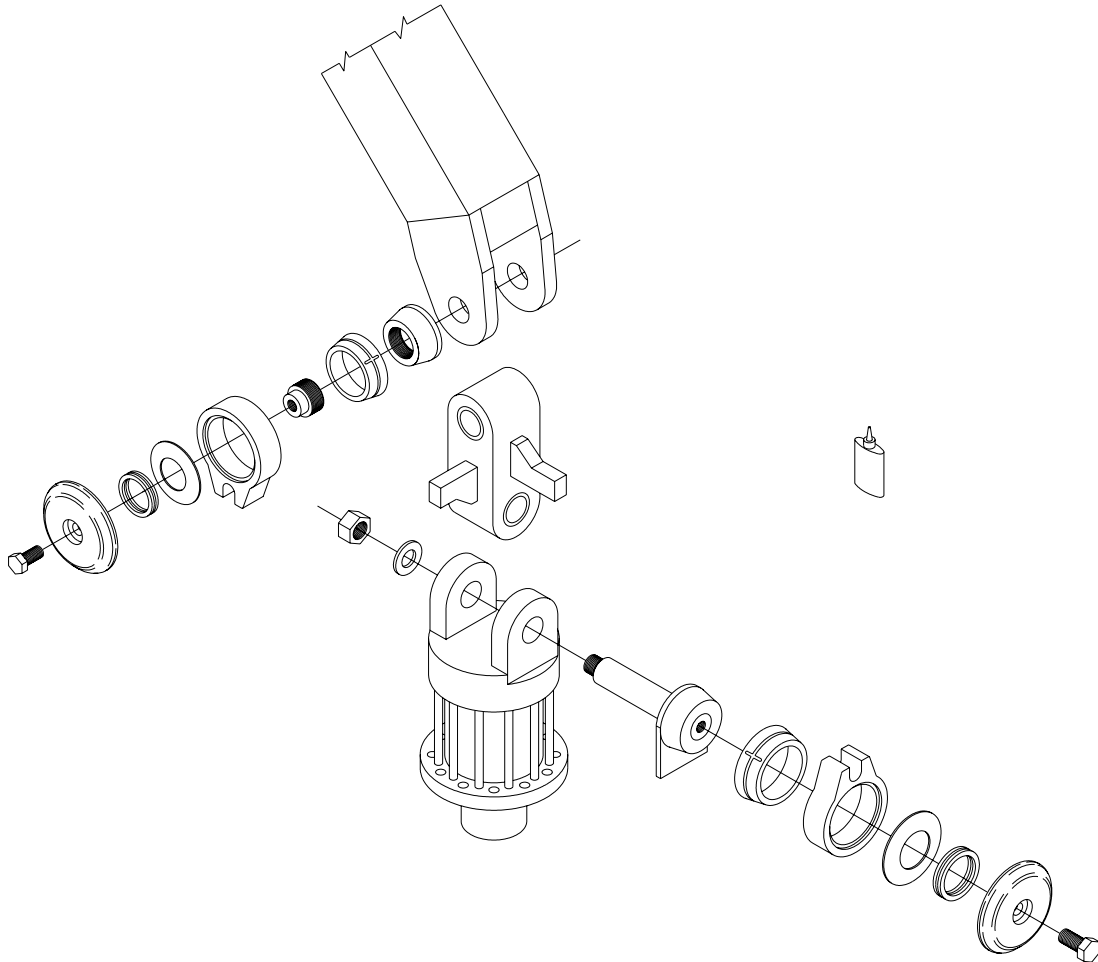


ITEM	PART#	DESCRIPTION	QTY
1	B3450	SNUBBER ASSEMBLY, 45 mm PIN (1.032" SLOT)	1
2	B3T-550	LINK, 100/45 mm – 100/45 mm 240 PIN CENTERS	1
	B3T-470	BUSHING, 45 mm I.D.	4

EXTERNAL MOUNT

B3450-7

NORTH AMERICA - USE WITH INDEXATOR ROTATORS
 AV11S, GV11S, AV12S, GV12S, GV15S, GV104S, AV14S, GV14S, GV17S
 LINK 100 mm WIDE @ ROTATOR EARS, 45 mm BUSHING I.D.
 LINK 100 mm WIDE @ CRANE NOSE, 45 mm BUSHING I.D.



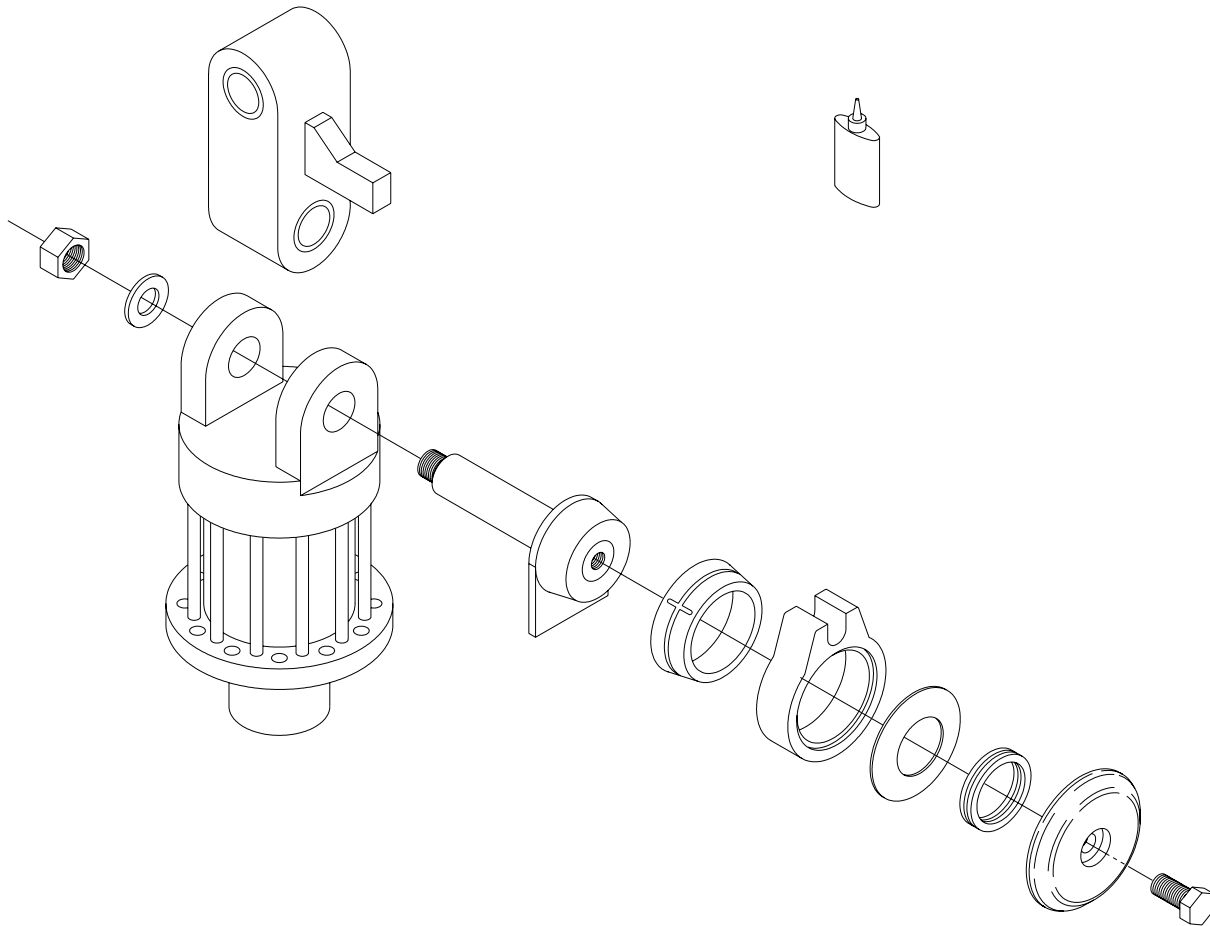
ITEM	PART#	DESCRIPTION	QTY
1	B3450	SNUBBER ASSEMBLY, 45 mm PIN (1.032" SLOT)	1
2	B3T-550	LINK, 100/45 mm – 100/45 mm 240 PIN CENTERS	1
	B3T-470	BUSHING, 45 mm I.D.	4
3	B3300	SNUBBER ASEMBLY, WELD ON (1.032" SLOT) 16mm BOLT	1

EXTERNAL MOUNT

450 SERIES

B3450- 8

EUROPE - USE WITH INDEXATOR ROTATORS
 AV11S, GV11S, AV12S, GV12S, GV15S, GV104S, AV14S, GV14S, GV17S
 LINK 100 mm WIDE @ ROTATOR EARS, 45 mm BUSHING I.D.
 LINK 80 mm WIDE @ CRANE NOSE, 35 mm BUSHING I.D.
 1 DIRECTION, SIDE TO SIDE

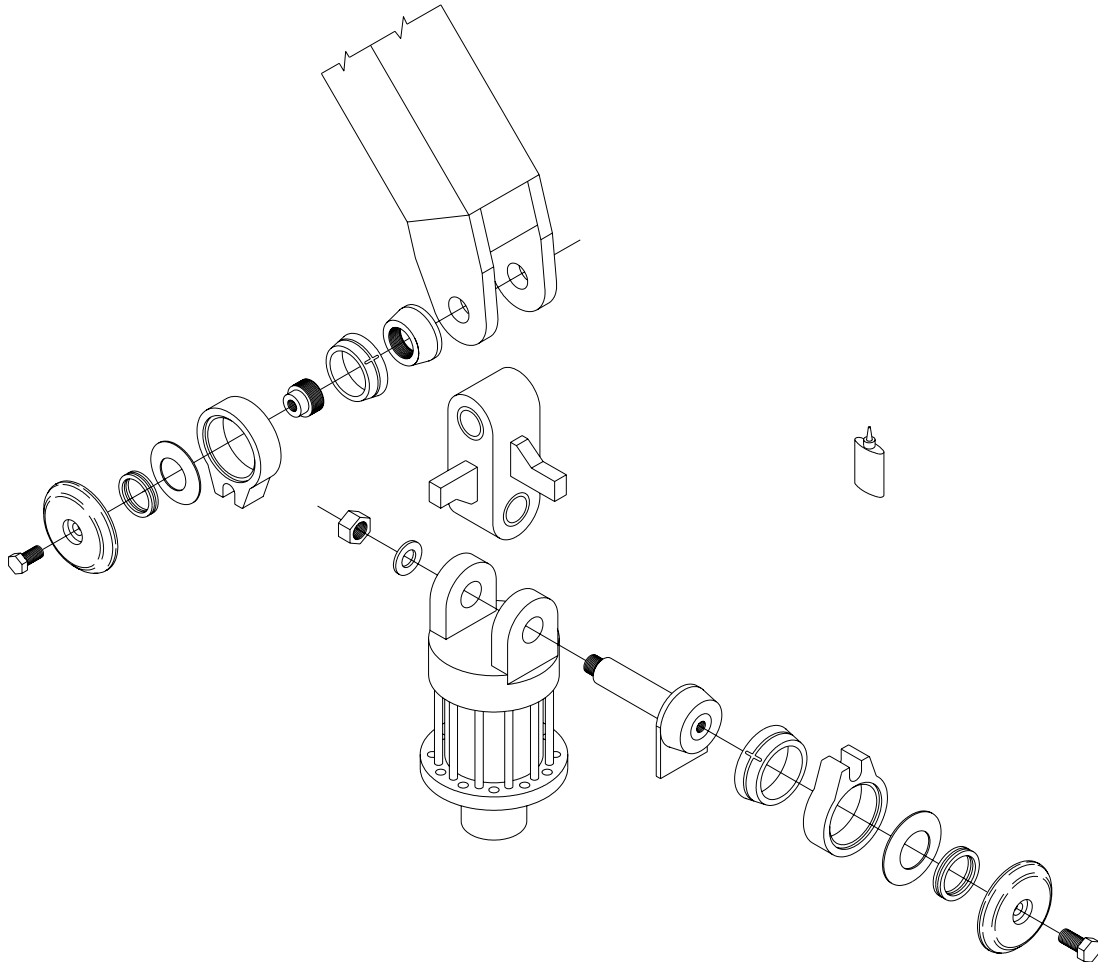


ITEM	PART#	DESCRIPTION	QTY
1	B3450-1	SNUBBER ASSEMBLY, 45 mm PIN (25mm SLOT)	1
2	B3T-480	LINK, 100/45 mm – 80/35 mm 190 PIN CENTERS	1
	B3T-470	BUSHING, 45 mm I.D.	2
	B3T-810	BUSHING, 35 mm I.D.	2

EXTERNAL MOUNT

B3450- 9

EUROPE - USE WITH INDEXATOR ROTATORS
 AV11S, GV11S, AV12S, GV12S, GV15S, GV104S, AV14S, GV14S, GV17S
 LINK 100 mm WIDE @ ROTATOR EARS, 45 mm BUSHING I.D.
 LINK 80 mm WIDE @ CRANE NOSE, 35 mm BUSHING I.D.



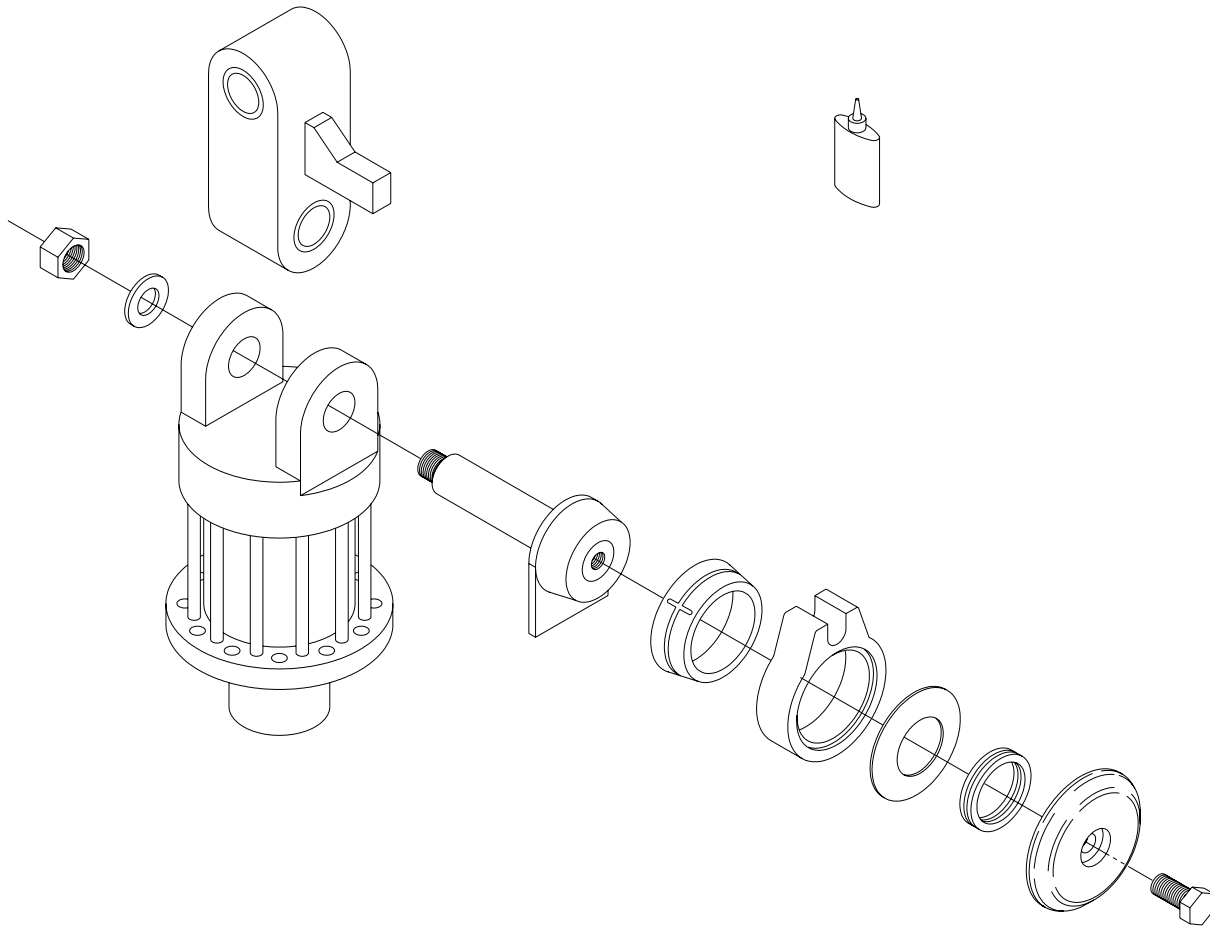
ITEM	PART#	DESCRIPTION	QTY
1	B3450-1	SNUBBER ASSEMBLY, 45 mm PIN (25mm SLOT)	1
2	B3T-480	LINK, 100/45 mm – 80/35 mm 190 PIN CENTERS	1
	B3T-470	BUSHING, 45 mm I.D.	2
	B3T-810	BUSHING, 35 mm I.D.	2
3	B3300-2	SNUBBER ASEMBLY, WELD ON (25mm SLOT) 16mm BOLT	1

EXTERNAL MOUNT

450 SERIES

B3450-10

EUROPE - USE WITH INDEXATOR ROTATORS
 AV11S, GV11S, AV12S, GV12S, GV15S, GV104S, AV14S, GV14S, GV17S
 LINK 100 mm WIDE @ ROTATOR EARS, 45 mm BUSHING I.D.
 LINK 100 mm WIDE @ CRANE NOSE, 45 mm BUSHING I.D.
 1 DIRECTION, SIDE TO SIDE

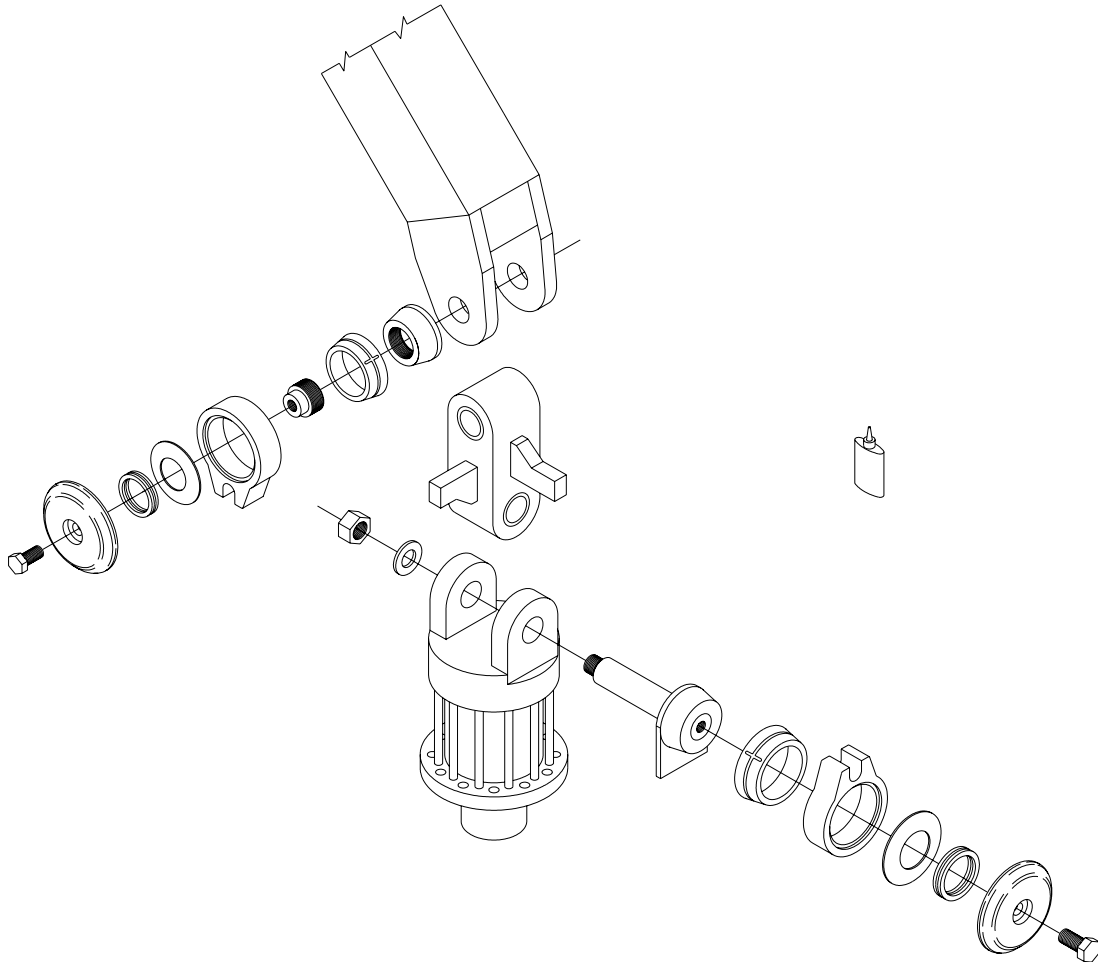


ITEM	PART#	DESCRIPTION	QTY
1	B3450-1	SNUBBER ASSEMBLY, 45 mm PIN (25mm SLOT)	1
2	B3T-485	LINK, 100/45 mm – 100/45 mm 190 PIN CENTERS	1
	B3T-470	BUSHING, 45 mm I.D.	4

EXTERNAL MOUNT

B3450- 11

EUROPE - USE WITH INDEXATOR ROTATORS
 AV11S, GV11S, AV12S, GV12S, GV15S, GV104S, AV14S, GV14S, GV17S
 LINK 100 mm WIDE @ ROTATOR EARS, 45 mm BUSHING I.D.
 LINK 100 mm WIDE @ CRANE NOSE, 45 mm BUSHING I.D.



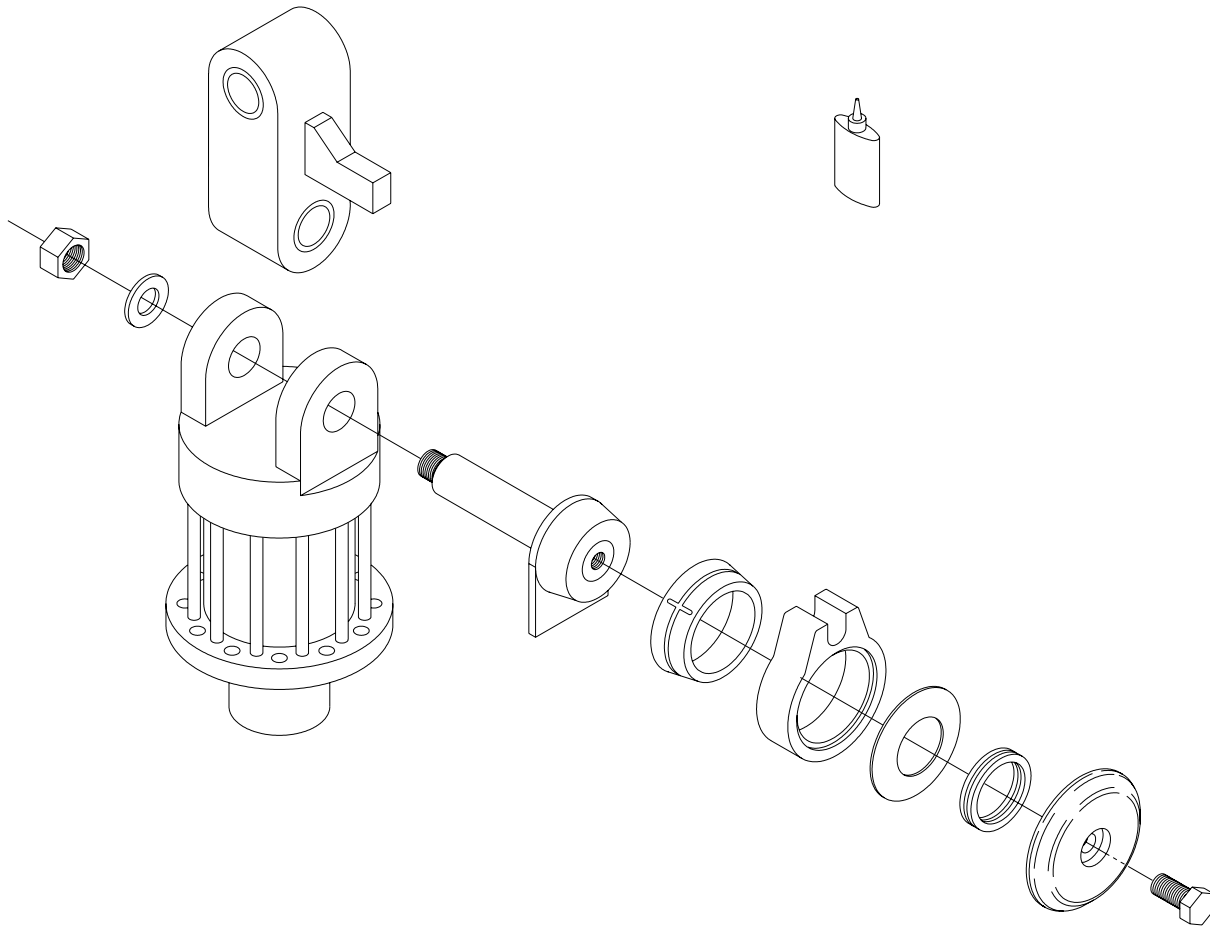
ITEM	PART#	DESCRIPTION	QTY
1	B3450-1	SNUBBER ASSEMBLY, 45 mm PIN (25mm SLOT)	1
2	B3T-485	LINK, 100/45 mm – 100/45 mm 190 PIN CENTERS	1
	B3T-470	BUSHING, 45 mm I.D.	4
3	B3300-2	SNUBBER ASEMBLY, WELD ON (25mm SLOT) 16mm BOLT	1

EXTERNAL MOUNT

450 SERIES

B3450-12

EUROPE - USE WITH INDEXATOR ROTATORS
 AV11S, GV11S, AV12S, GV12S, GV15S, GV104S, AV14S, GV14S, GV17S
 LINK 100 mm WIDE @ ROTATOR EARS, 45 mm BUSHING I.D.
 LINK 100 mm WIDE @ CRANE NOSE, 45 mm BUSHING I.D.
 1 DIRECTION, SIDE TO SIDE

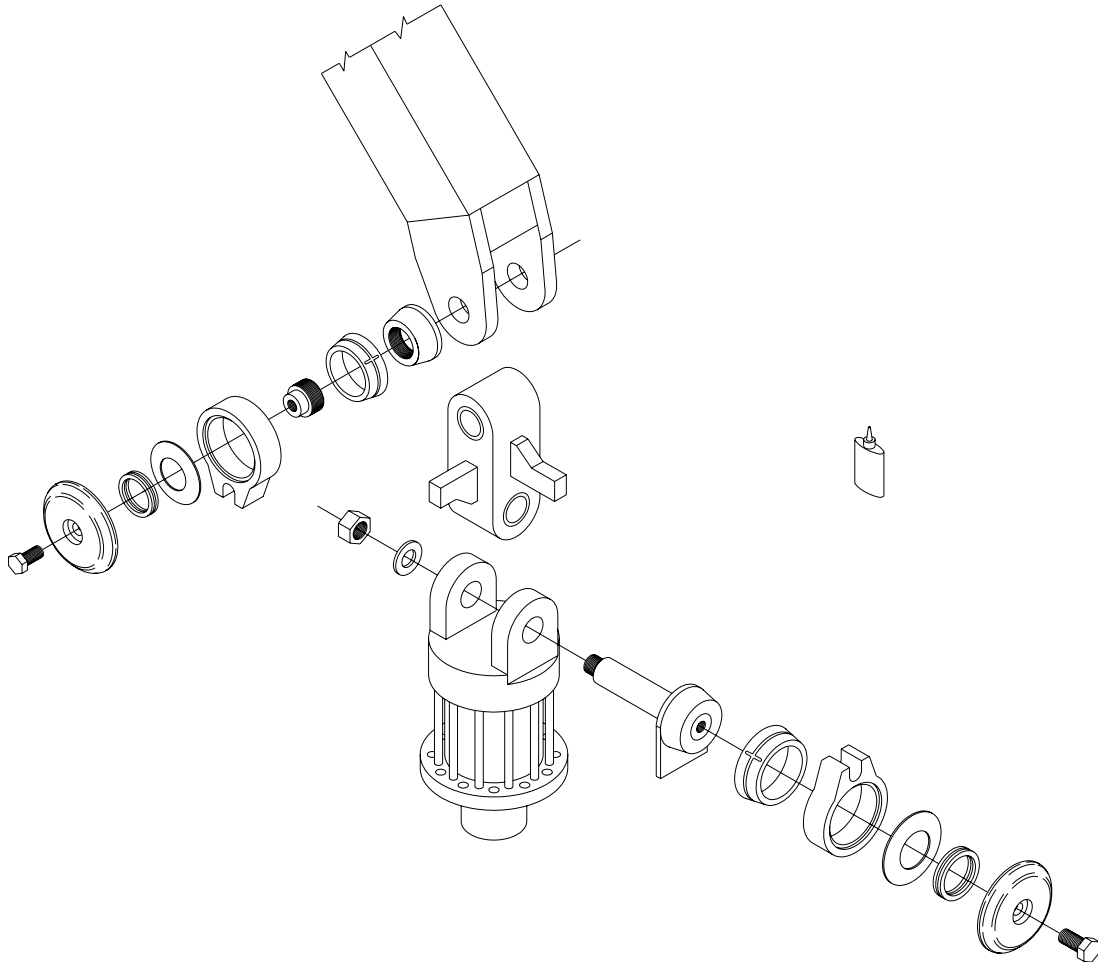


ITEM	PART#	DESCRIPTION	QTY
1	B3450-1	SNUBBER ASSEMBLY, 45 mm PIN (25mm SLOT)	1
2	B3T-550	LINK, 100/45 mm – 100/45 mm 240 PIN CENTERS	1
	B3T-470	BUSHING, 45 mm I.D.	4

EXTERNAL MOUNT

B3450-13

EUROPE - USE WITH INDEXATOR ROTATORS
 AV11S, GV11S, AV12S, GV12S, GV15S, GV104S, AV14S, GV14S, GV17S
 LINK 100 mm WIDE @ ROTATOR EARS, 45 mm BUSHING I.D.
 LINK 100 mm WIDE @ CRANE NOSE, 45 mm BUSHING I.D.



ITEM	PART#	DESCRIPTION	QTY
1	B3450-1	SNUBBER ASSEMBLY, 45 mm PIN (25mm SLOT)	1
2	B3T-550	LINK, 100/45 mm – 100/45 mm 240 PIN CENTERS	1
	B3T-470	BUSHING, 45 mm I.D.	4
3	B3300-2	SNUBBER ASEMBLY, WELD ON (25mm SLOT) 16mm BOLT	1