

SECTION 7-2

755 SERIES

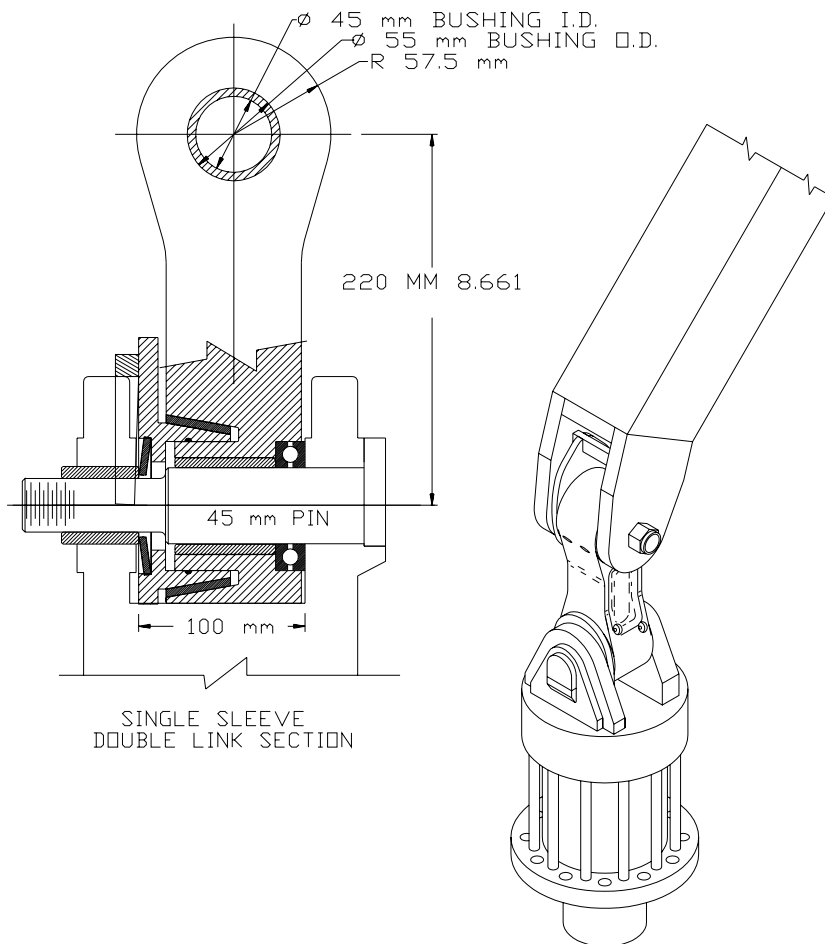
| | |
|--------|--|
| 7-2-2 | Snubber assembly - parts |
| 7-2-3 | Mounting and operational instructions |
| 7-2-4 | B3755 |
| 7-2-6 | B3755-1 |
| 7-2-8 | B3755-2 |
| 7-2-10 | B3755-3 |
| 7-2-12 | Snubber assembly – parts for Prentice |
| 7-2-13 | Mounting and operational instructions for Prentice |
| 7-2-14 | B3755-4 |

EXTERNAL MOUNT

SINGLE

SNUBBER ASSEMBLY – PARTS

INDEXATOR REPLACEMENT - GV11S GV12S GV14S
 GV15S GV17S



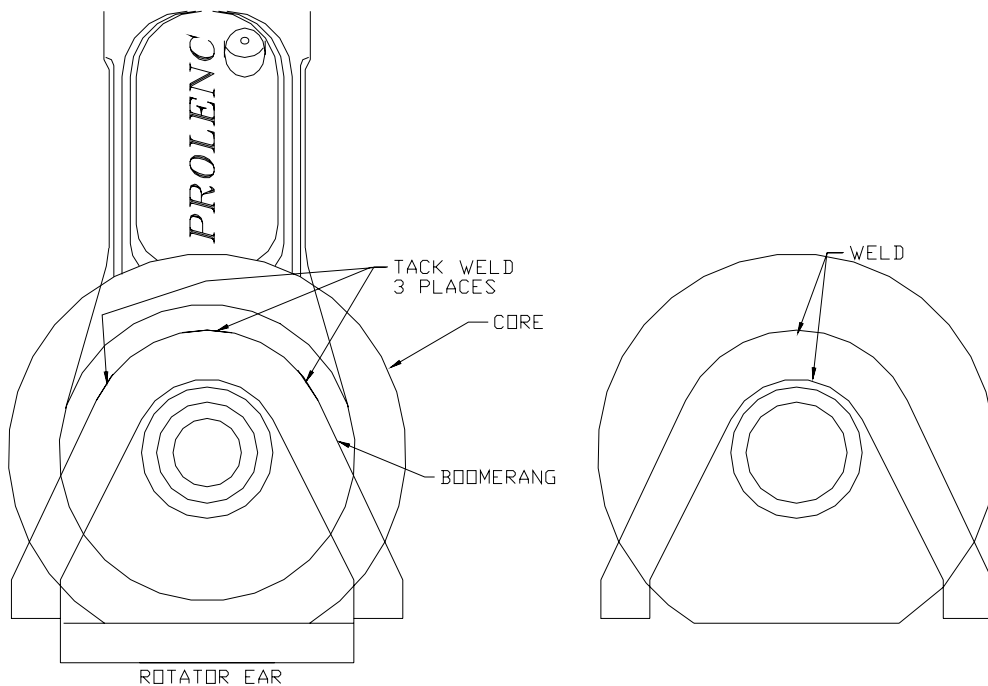
PATENTED - U.S. No. 6,264,013
 - Canada No. 2,257,056
 - Sweden No. 521,177
 - Finland No. 116,136
 - Other patents pending

EXTERNAL MOUNT

MOUNTING AND OPERATIONAL INSTRUCTIONS

ROTATE YOKE MOUNT

- 1) Remove original pins from rotator and crane nose, remove link.
- 2) Pack bearing with grease and install.
- 3) Grease friction sleeve, B3T-865 (zinc) only B3T-760 (composite) to be dry fit, for maximum component life, a tight fit core to rotator top is necessary, build-up if required. Install concave side of spring-washer towards core, insert link assembly between ears of rotator.
- 4) Grease pin and install with the headed end of pin mating with original pin lock on rotator.
- 5) Lubricate tension collar, inside and out with never seeze – install collar and nut.



EXTERNAL MOUNT

SINGLE

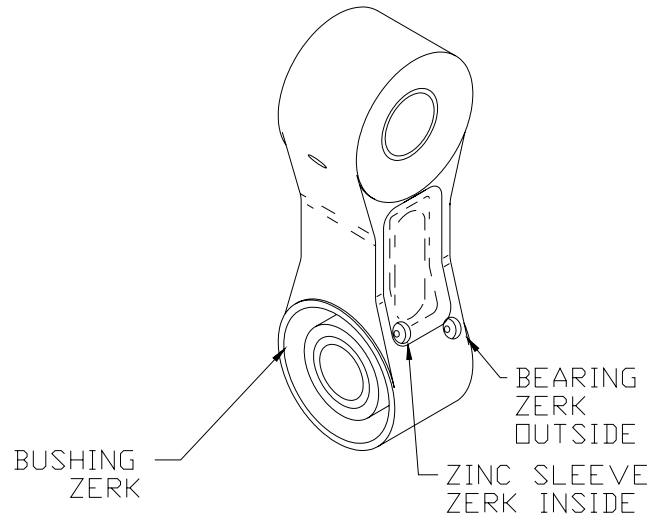
MOUNTING AND OPERATIONAL INSTRUCTIONS

CRANE NOSE MOUNT

- 1) Install link and re-use original pin. A worn pin must be replaced with a new O.E.M. crane pin.
- 2) For 100 mm Wide crane nose install spacers provided. **WELD** spacers to crane nose after installation.

SERVICE AND ADJUSTMENT

- To adjust, tighten nut against tension collar.
- Composite sleeve B3T-760 – Maintenance Free –
- *** **LIGHTLY** adjust for first 1/2 hour to “run-in” sleeve – then adjust to desired attachment control.
- **MAXIMUM** adjustment of nut is **3/4** TURN after nut has contacted tension collar.
- **Grease** zinc sleeve, B3T-865 every **10** hours.



Load must be maintained on core at all times to avoid damage to core or link

Greases with 5% - 6% MOLY are recommended:

Military Spec. MIL G23549C

- Lubriplate 176 5⁰F./-15⁰C.
- Lubriplate 3000 15⁰F./-9.5⁰C.
- Lubriplate 3000w -30⁰F./-34.5⁰C.
- or EQUIVALENT

CAUTION:

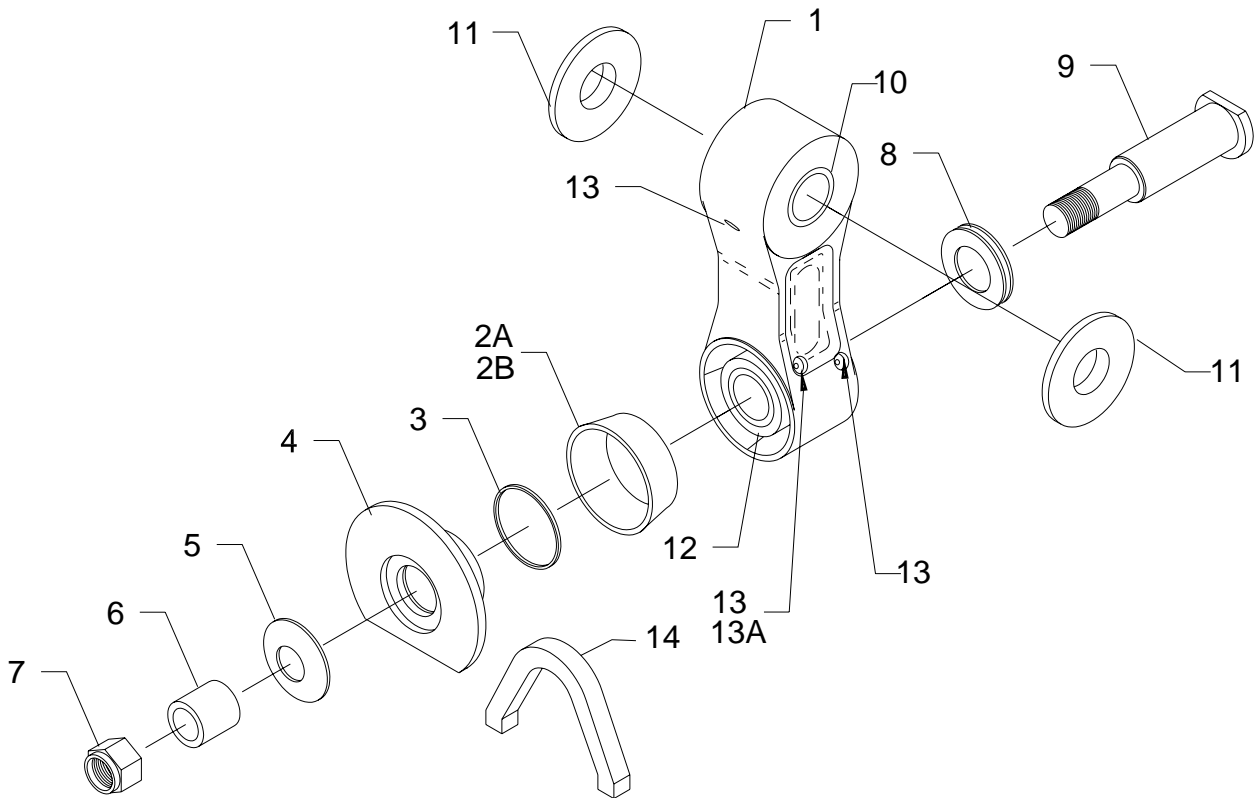
Only tension snubber to maintain adequate control of attachment dependant upon application and attachment weight.

Over tensioning of snubber reduces friction sleeve life.

EXTERNAL MOUNT
B3755

SINGLE

USE WITH INDEXATOR ROTATORS
AV11S, GV11S, AV12S, GV12S, GV15S, GV104S, AV14S, GV14S & GV17S
CRANE NOSE – 45 mm. PIN – 80 mm. WIDE BETWEEN EARS



EXTERNAL MOUNT
B3755

SINGLE

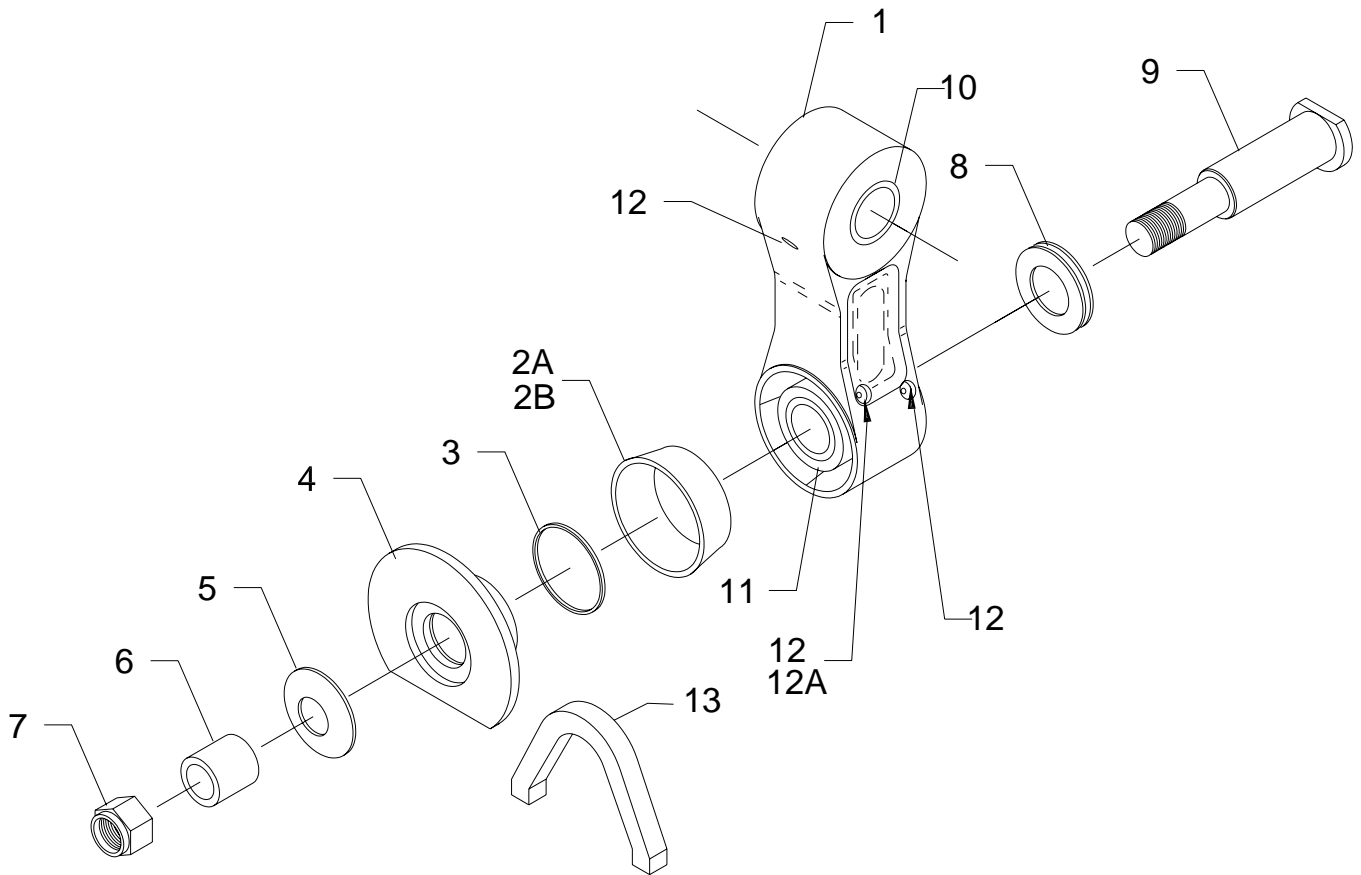
USE WITH INDEXATOR ROTATORS
 AV11S, GV11S, AV12S, GV12S, GV15S, GV104S, AV14S, GV14S & GV17S
 CRANE NOSE – 45 mm. PIN – 80 mm. WIDE BETWEEN EARS

| ITEM | PART# | DESCRIPTION | QTY |
|------|----------|---|-----|
| 1 | B3T-755 | SINGLE LINK | 1 |
| 2A | B3T-760 | FRICTION SLEEVE – COMPOSITE | 1 |
| 2B | B3T-865 | FRICTION SLEEVE – ZINC | 1 |
| 3 | B3T-825 | O-RING – USE WITH COMPOSITE SLEEVE | 1 |
| 4 | B3T-1385 | CORE – WELD TO BOOMERANG | 1 |
| 5A | B3T-775 | SPRING 5mm THICK USE WITH B3T-865 ZINC SLEEVE | 1 |
| 5B | B3T-890 | SPRING 4mm THICK USE WITH B3T-760 COMPOSITE SLEEVE | 1 |
| 6 | B3T-770 | TENSION COLLAR | 1 |
| 7 | B3T-800 | NUT 1 3/8" – 12 NYLOCK JAM | 1 |
| 8 | B3T-1035 | BEARING | 1 |
| 9 | B3T-780 | PIN | 1 |
| 10 | B3T-470 | BUSHING - HARD BRONZE 45 mm. I.D. | 2 |
| 11 | B3T-980B | BUSHING – HARD BRONZE 45 mm. I.D. | 1 |
| 12 | B3T-1130 | ZERK 1/4-28 STRAIGHT | 3 |
| 12A | B3T-1190 | PLUG – USE WITH COMPOSITE SLEEVE ONLY | 1 |
| 13 | B3T-1390 | BOOMERANG – WELD TO CORE | 1 |

EXTERNAL MOUNT
B3755-1

SINGLE

USE WITH INDEXATOR ROTATORS
AV11S, GV11S, AV12S, GV12S, GV15S, GV104S, AV14S, GV14S & GV17S
CRANE NOSE – 45 mm. PIN – 100 mm. WIDE BETWEEN EARS



EXTERNAL MOUNT
B3755-1

SINGLE

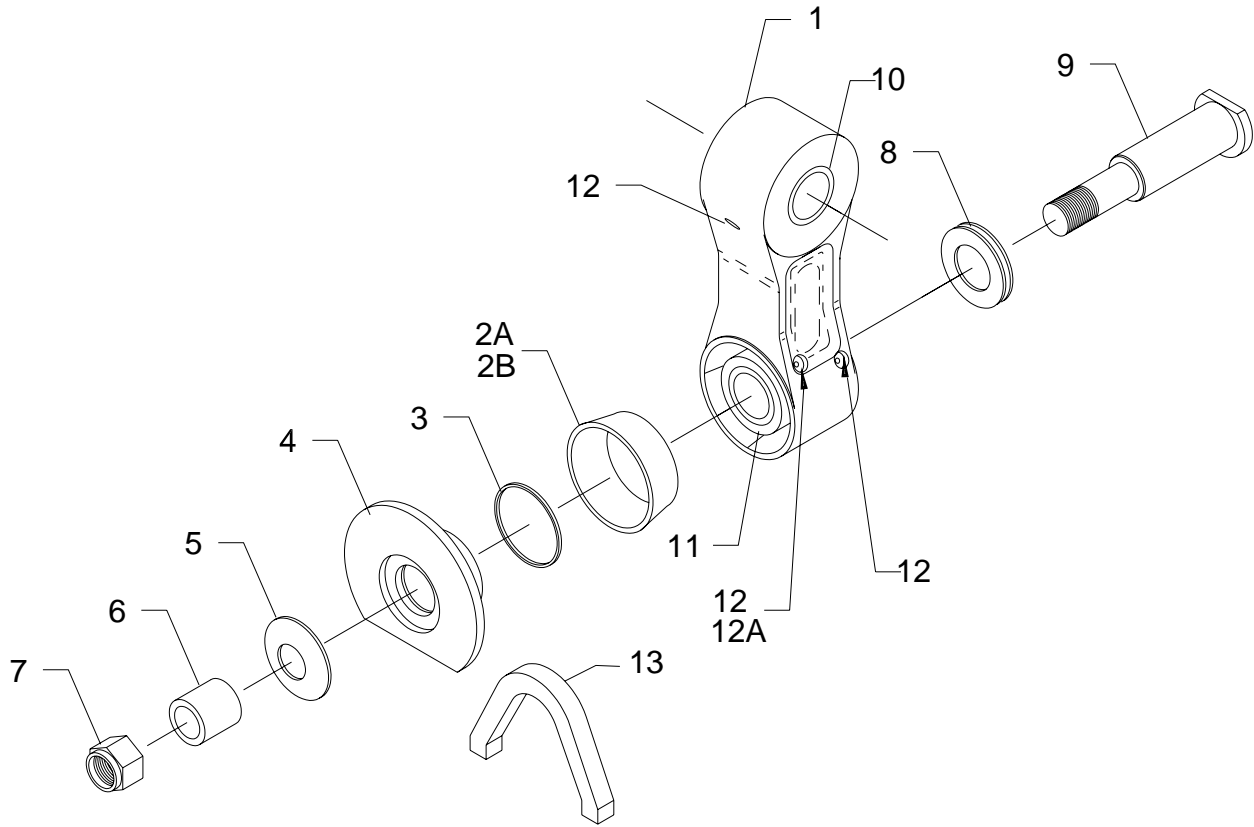
USE WITH INDEXATOR ROTATORS
 AV11S, GV11S, AV12S, GV12S, GV15S, GV104S, AV14S, GV14S & GV17S
 CRANE NOSE – 45 mm. PIN – 100 mm. WIDE BETWEEN EARS

| ITEM | PART# | DESCRIPTION | QTY |
|------|----------|---|-----|
| 1 | B3T-755 | SINGLE LINK | 1 |
| 2A | B3T-760 | FRICITION SLEEVE – COMPOSITE | 1 |
| 2B | B3T-865 | FRICITION SLEEVE – ZINC | 1 |
| 3 | B3T-825 | O-RING – USE WITH COMPOSITE SLEEVE | 1 |
| 4 | B3T-1385 | CORE – WELD TO BOOMERANG | 1 |
| 5A | B3T-775 | SPRING 5mm THICK USE WITH B3T-865 ZINC SLEEVE | 1 |
| 5B | B3T-890 | SPRING 4mm THICK USE WITH B3T-760 COMPOSITE SLEEVE | 1 |
| 6 | B3T-770 | TENSION COLLAR | 1 |
| 7 | B3T-800 | NUT 1 3/8" – 12 NYLOCK JAM | 1 |
| 8 | B3T-1035 | BEARING | 1 |
| 9 | B3T-780 | PIN | 1 |
| 10 | B3T-470 | BUSHING HARD BRONZE 45 mm. I.D. | 2 |
| 11 | B3T-830 | SPACER 4.5"(114mm.)x1.8"(46mm)x3/8"(10mm) thick | 2 |
| 12 | B3T-980B | BUSHING – HARD BRONZE | 1 |
| 13 | B3T-1130 | ZERK 1/4-28 STRAIGHT | 3 |
| 13A | B3T-1190 | PLUG – USE WITH COMPOSITE SLEEVE ONLY | 1 |
| 14 | B3T-1390 | BOOMERANG – WELD TO CORE | 1 |

EXTERNAL MOUNT
B3755-2

SINGLE

USE WITH INDEXATOR ROTATORS
AV11S, GV11S, AV12S, GV12S, GV15S, GV104S, AV14S, GV14S & GV17S
CRANE NOSE – 35 mm. PIN – 80 mm. WIDE BETWEEN EARS



EXTERNAL MOUNT
B3755-2

SINGLE

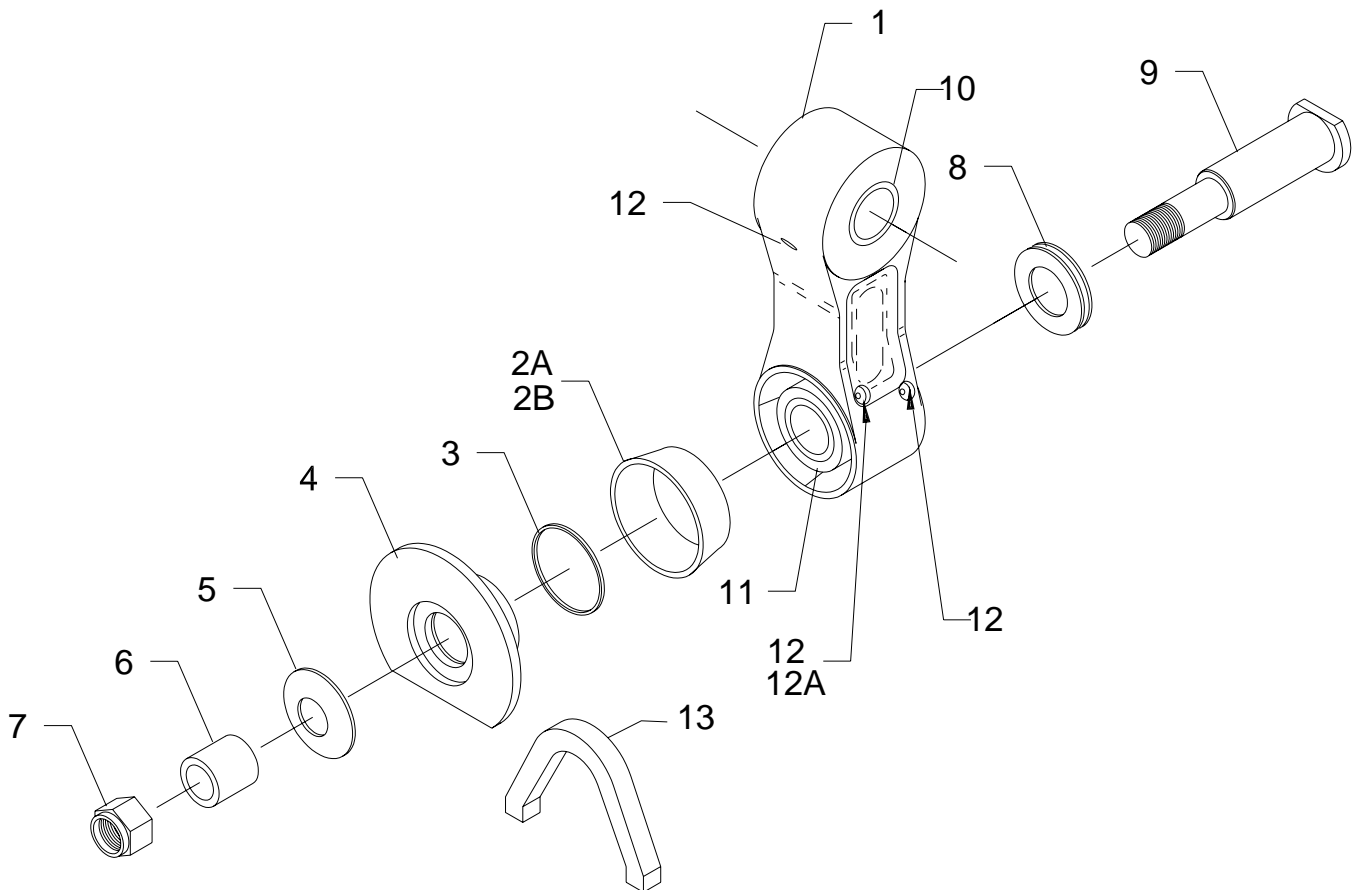
USE WITH INDEXATOR ROTATORS
 AV11S, GV11S, AV12S, GV12S, GV15S, GV104S, AV14S, GV14S & GV17S
 CRANE NOSE – 35 mm. PIN – 80 mm. WIDE BETWEEN EARS

| ITEM | PART# | DESCRIPTION | QTY |
|------|----------|---|-----|
| 1 | B3T-755 | SINGLE LINK | 1 |
| 2A | B3T-760 | FRICITION SLEEVE – COMPOSITE | 1 |
| 2B | B3T-865 | FRICITION SLEEVE – ZINC | 1 |
| 3 | B3T-825 | O-RING – USE WITH COMPOSITE SLEEVE | 1 |
| 4 | B3T-1380 | CORE – WELD TO BOOMERANG | 1 |
| 5A | B3T-775 | SPRING 5mm THICK USE WITH B3T-865 ZINC SLEEVE | 1 |
| 5B | B3T-890 | SPRING 4mm THICK USE WITH B3T-760 COMPOSITE SLEEVE | 1 |
| 6 | B3T-770 | TENSION COLLAR | 1 |
| 7 | B3T-800 | NUT 1 3/8" – 12 NYLOCK JAM | 1 |
| 8 | B3T-1035 | BEARING | 1 |
| 9 | B3T-780 | PIN | 1 |
| 10 | B3T-810 | BUSHING – HARD BRONZE 35 mm. I.D. | 2 |
| 11 | B3T-980B | BUSHING – HARD BRONZE 45 mm. I.D. | 1 |
| 12 | B3T-1130 | ZERK 1/4-28 STRAIGHT | 3 |
| 12A | B3T-1190 | PLUG – USE WITH COMPOSITE SLEEVE ONLY | 1 |
| 13 | B3T-1390 | BOOMERANG – WELD TO CORE | 1 |

EXTERNAL MOUNT
B3755-3

SINGLE

USE WITH INDEXATOR ROTATORS
AV11S, GV11S, AV12S, GV12S, GV15S, GV104S, AV14S, GV14S & GV17S
CRANE NOSE – 1 3/4" PIN – 80 mm. WIDE BETWEEN EARS



EXTERNAL MOUNT
B3755-3

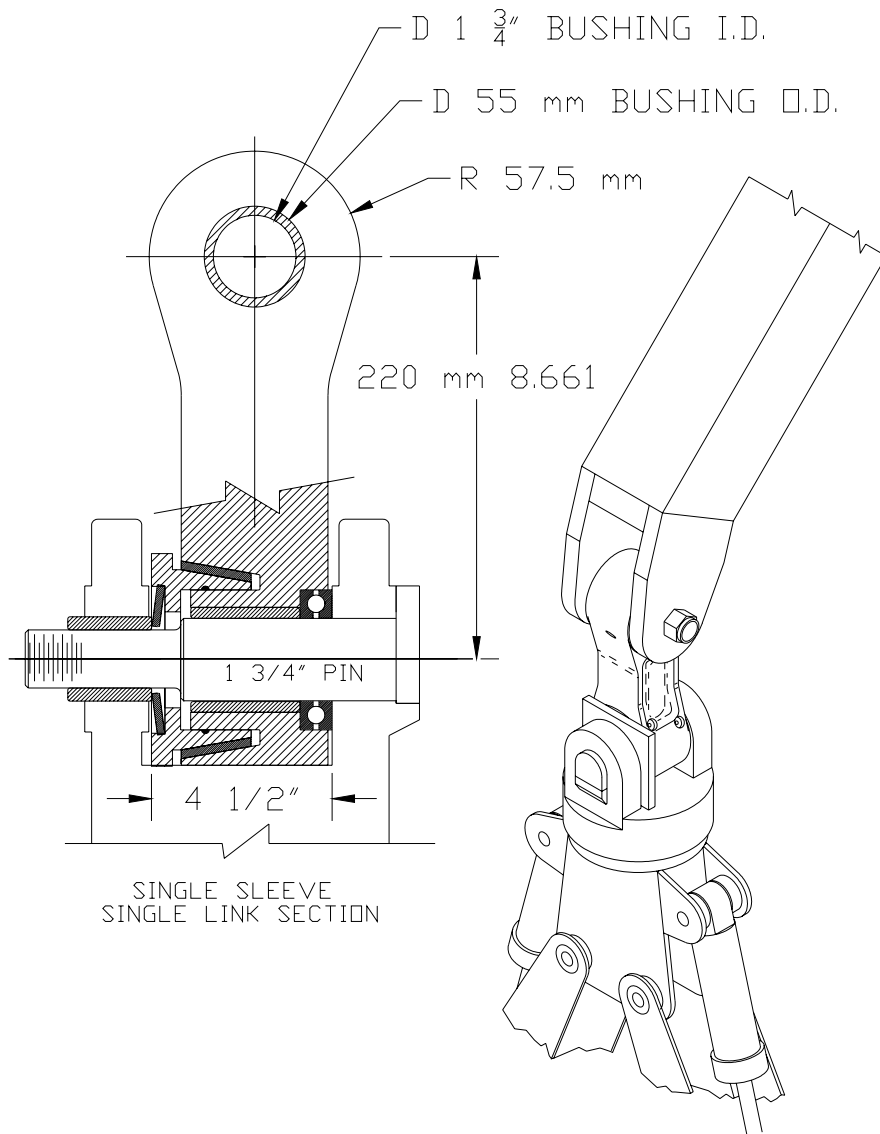
SINGLE

USE WITH INDEXATOR ROTATORS
 AV11S, GV11S, AV12S, GV12S, GV15S, GV104S, AV14S, GV14S & GV17S
 CRANE NOSE – 1 3/4" PIN – 80 mm. WIDE BETWEEN EARS

| ITEM | PART# | DESCRIPTION | QTY |
|------|----------|---|-----|
| 1 | B3T-755 | SINGLE LINK | 1 |
| 2A | B3T-760 | FRICITION SLEEVE – COMPOSITE | 1 |
| 2B | B3T-865 | FRICITION SLEEVE – ZINC | 1 |
| 3 | B3T-825 | O-RING – USE WITH COMPOSITE SLEEVE | 1 |
| 4 | B3T-1380 | CORE – WELD TO BOOMERANG | 1 |
| 5A | B3T-775 | SPRING 5mm THICK USE WITH B3T-865 ZINC SLEEVE | 1 |
| 5B | B3T-890 | SPRING 4mm THICK USE WITH B3T-760 COMPOSITE SLEEVE | 1 |
| 6 | B3T-770 | TENSION COLLAR | 1 |
| 7 | B3T-800 | NUT 1 3/8" – 12 NYLOCK JAM | 1 |
| 8 | B3T-1035 | BEARING | 1 |
| 9 | B3T-780 | PIN | 1 |
| 10 | B3T-845 | BUSHING – HARD BRONZE 1 3/4" I.D. | 2 |
| 11 | B3T-980B | BUSHING – HARD BRONZE 45 mm I.D. | 1 |
| 12 | B3T-1130 | ZERK 1/4-28 STRAIGHT | 3 |
| 12A | B3T-1190 | PLUG – USE WITH COMPOSITE SLEEVE | 1 |
| 13 | B3T-1390 | BOOMERANG – WELD TO CORE | 1 |

SNUBBER ASSEMBLY – PARTS

PRENTICE REPLACEMENT - F90, 120, 150
GRAPPLES - 20SW, 42SW, 60SW – 25CB, 25CF, 25P – 33CB, 33CF, 33P



PATENTED - U.S. No. 6,264,013
- Canada No. 2,257,056
- Sweden No. 521,177
- Other patents pending

EXTERNAL MOUNT

SINGLE

MOUNTING AND OPERATIONAL INSTRUCTIONS

ROTATE YOKE MOUNT

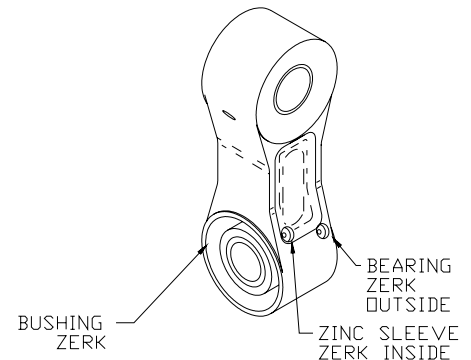
- 1) Remove original pins from rotator and boom nose, remove link. Grind off original hexagon pin lock on rotator, insert 3/8" spacer in rotate yoke on bearing side of link, **WELD** into position after assembly.
- 2) Pack bearing with grease and install.
- 3) Grease friction sleeve, B3T-865 (zinc). B3T-760 (composite) to be dry fit, maintenance free. Install concave side of spring-washer towards the core, insert link assembly between ears of rotator. Fit core stop against bottom of core to rotator, ensure **tight fit** and **WELD** into position.
- 4) Grease pin and install.
- 5) Lubricate tension collar, inside and out with Never Seize – install collar and nut.

BOOM NOSE MOUNT

- 1) Install link and re-use original pin, a worn pin must be replaced with a new O.E.M. pin.
- 2) For 4 1/2" inside width boom nose, install 3/4" spacer provided. **WELD** spacers to boom nose after installation.

SERVICE AND ADJUSTMENT

- To adjust, tighten nut against tension collar.
- Composite sleeve B3T-760 – maintenance free. Lightly adjust for first 1/2 hour to “run-in” sleeve – then adjust to desired attachment control.
- **MAXIMUM** adjustment of nut is **3/4 TURN** after nut has contacted tension collar.
- **Grease** zinc sleeve, B3T-865 every **10** hours.



Load must be maintained on core at all times to avoid damage to core or link

Greases with 5% - 6% MOLY are recommended:

Military Spec. MIL G23549C

-Lubriplate 176 5⁰F./-15⁰C.

-Lubriplate 3000 15⁰F./-9.5⁰C.

-Lubriplate 3000w -30⁰F./-34.5⁰C.

-or EQUIVALENT

CAUTION:

Only tension snubber to maintain adequate control of attachment, dependant upon application and attachment weight.

PROLENC[®]

MANUFACTURING INC

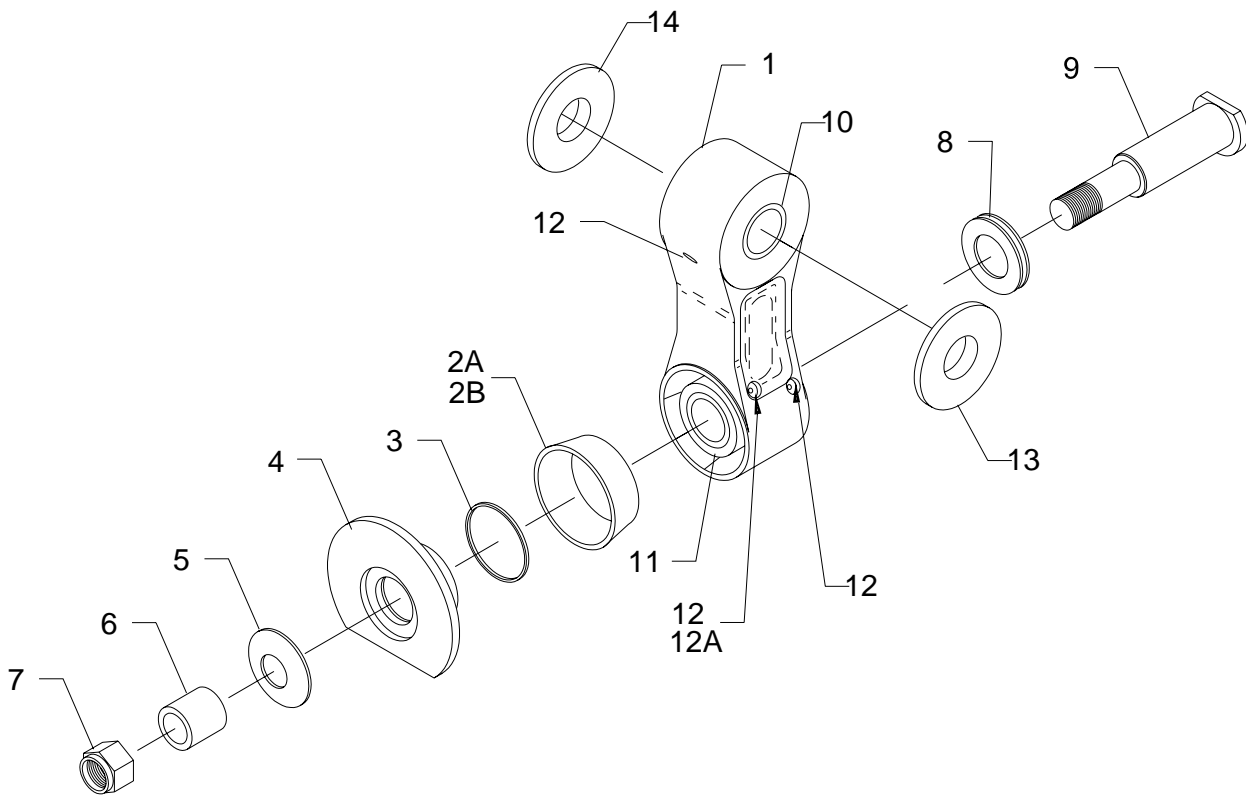
Over tensioning of snubber reduces friction sleeve life.

EXTERNAL MOUNT

B3755-4

SINGLE

USE WITH PRENTICE GRAPPLES
SOLID WASTE 20SW, 42SW, 60SW – LOG 25CB, 25CF, 25P – 33CB, 33CF, 33P
BOOM NOSE – 1 3/4" PIN – 4 1/2" WIDE BETWEEN EARS



EXTERNAL MOUNT
B3755-4

SINGLE

USE WITH PRENTICE GRAPPLES
 SOLID WASTE 20SW, 42SW, 60SW – LOG 25CB, 25CF, 25P – 33CB, 33CF, 33P
 BOOM NOSE – 1 3/4" PIN – 4 1/2" WIDE BETWEEN EARS

| ITEM | PART# | DESCRIPTION | QTY |
|------|----------|---|-----|
| 1 | B3T-755 | SINGLE LINK – 8.66" PIN CENTERS | 1 |
| 2A | B3T-760 | FRICITION SLEEVE – COMPOSITE | 1 |
| 2B | B3T-865 | FRICITION SLEEVE – ZINC | 1 |
| 3 | B3T-825 | O-RING | 1 |
| 4 | B3T-765 | CORE | 1 |
| 5A | B3T-775 | SPRING 5mm THICK USE WITH B3T-865 ZINC SLEEVE | 1 |
| 5B | B3T-890 | SPRING 4mm THICK USE WITH B3T-760 COMPOSITE SLEEVE | 1 |
| 6 | B3T-860 | TENSION COLLAR 1 3/4" O.D. | 1 |
| 7 | B3T-800 | NUT 1 3/8" – 12 NYLOCK | 1 |
| 8 | B3T-1035 | BEARING | 1 |
| 9 | B3T-855 | PIN – 1 3/4" O.D. x 8.245" LONG | 1 |
| 10 | B3T-845 | BUSHING 1 3/4" I.D. | 2 |
| 11 | B3T-850 | BUSHING | 1 |
| 12 | B3T-1130 | ZERK 1/4-28 STRAIGHT | 3 |
| 12A | B3T-1190 | PLUG – USE WITH COMPOSITE SLEEVE | 1 |
| 13 | B3T-830 | SPACER BOTTOM BEARING SIDE OF LINK | 1 |
| 14 | B3T-805 | SPACER TOP 1 EACH SIDE | 2 |
| 15 | B3T-840 | PIN LOCK | 1 |
| 16 | B3T-835 | CORE STOP | 1 |