

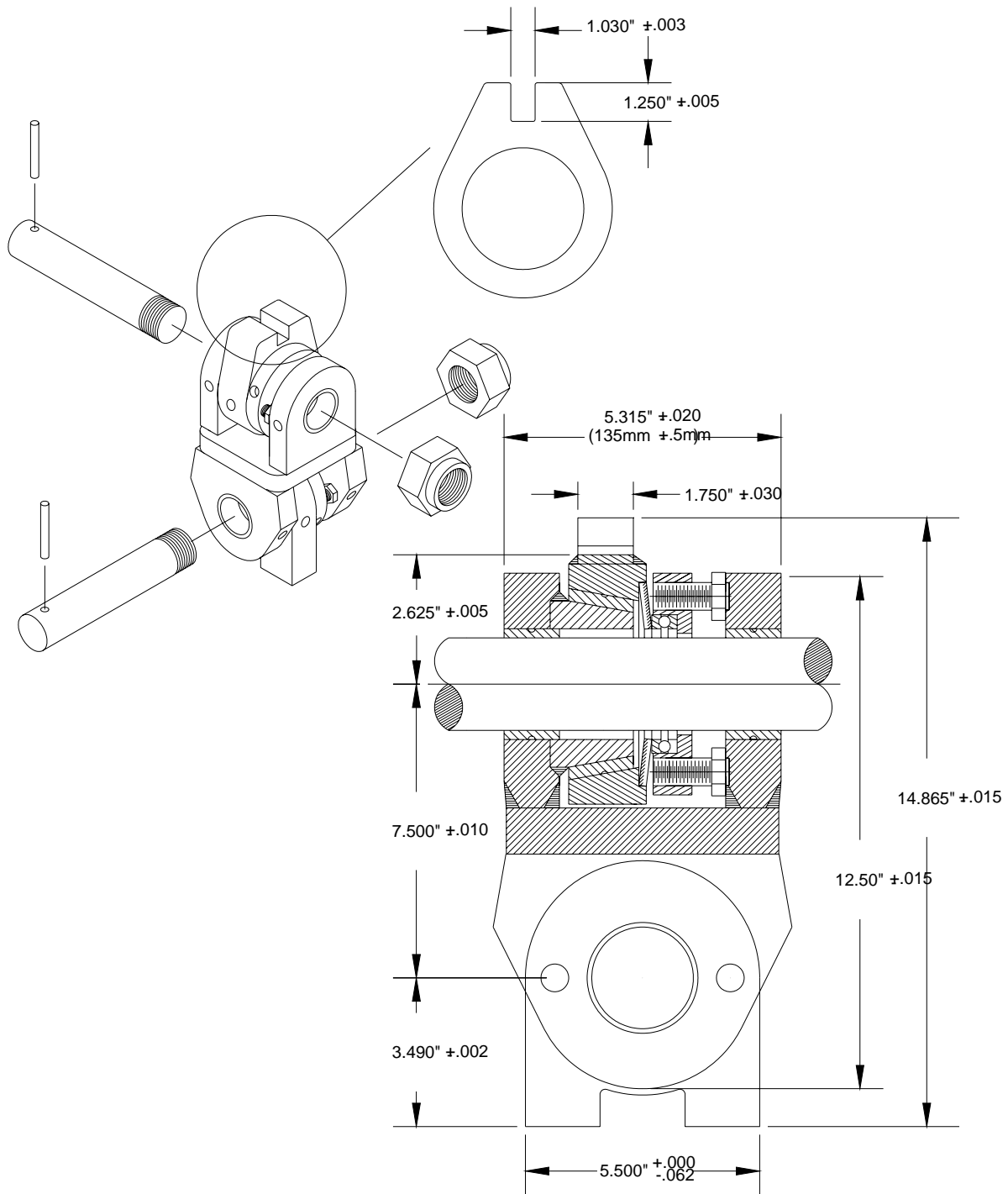
**S**ECTION 8  
1000 SERIES

8-3	<a href="#"><u>Snubber Assembly - Parts</u></a>
8-4	<a href="#"><u>Mounting and Operational Instructions</u></a>
8-6	<a href="#"><u>B31000HD-1</u></a>
8-8	<a href="#"><u>B31000HD-2</u></a>
8-10	<a href="#"><u>B31000HD-3</u></a>
8-12	<a href="#"><u>B31000HD-4</u></a>
8-14	<a href="#"><u>B31000HD-6</u></a>
8-16	<a href="#"><u>B31000HD-8</u></a>
8-18	<a href="#"><u>B31000HD-12</u></a>
8-20	<a href="#"><u>B31000HD-13</u></a>

**INTERNAL MOUNT**

**1000 SERIES**

SNUBBER ASSEMBLY – PARTS



## INTERNAL MOUNT

1000 SERIES

### MOUNTING AND OPERATIONAL INSTRUCTIONS

#### INSTRUCTIONS:

##### A.) STICK BOOM MOUNT

NOTE: Minimum 5-3/8" (136.5mm) width between boom ears required. Narrower widths will require repositioning of boom ears.

1. Insert snubber link between ears of the stick boom to determine location of 1" anchor insert. Some nose designs may require a level mounting plate fabrication to position anchor insert. Shims or spacers may need to be added to each side of the link.

**NOTE: If over rotation of snubber occurs in severe applications, stops should be welded to each side of the mid-plate area to prevent housing from contacting mid-plate.**

##### B.) INDEXATOR ROTATOR MOUNTS

1. GV11US – GV12US – GV14US – GV15US – GV17US (designed as a direct replacement).
2. "S" Series may be upgraded to "US" series by replacement of upper stator housing.

AV11S – AV12S – use Indexator # 5011182  
GV11S – GV12S – GV15S – use Indexator 5011178  
GV14S – GV17S – use Indexator # 5114178

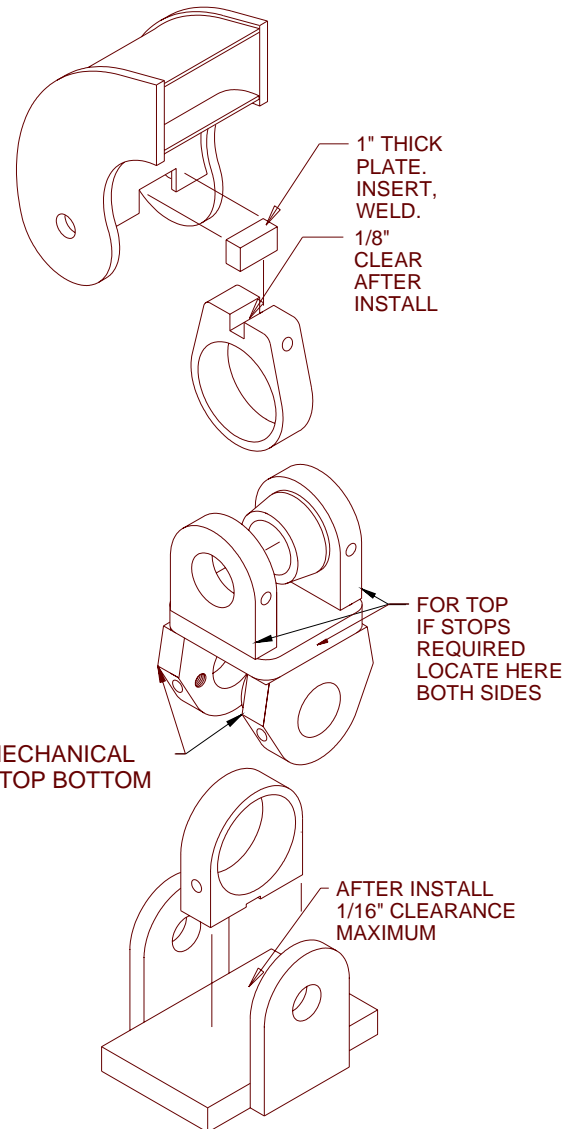
3. Follow standard Indexator procedures for replacement of housings.

**NOTE: Mechanical stops are integrated in lower link ears to prevent over rotation of snubber.**

##### C.) ROTOBEC AND OTHERS

NOTE: Minimum 5-3/8" (136.5mm) width between ears required. Narrower widths will require repositioning of rotator ears or replacement of top cover.

Wider width between ears will require spacers to 5 3/8". These should be welded into position after installation.



**INTERNAL MOUNT**

**1000 SERIES**

1. Fit link between Rotator ears, install spacers if required, then install pin. 1/16" clearance maximum required between foot housing and top of Rotator. For larger clearances a spacer plate must be welded to Rotator top for tight fit. If spacers are required, tack into position. Measure clearance then remove pin and snubber assembly.
2. Insert, weld and reinforce stop plate between ears of rotate yoke. Weld spacers into position, if required.

**NOTE: Plate should be large enough to provide full contact on the mechanical stops of the lower link ears to prevent over-rotation.**

3. For Shims or Spacers added to each side of the link, shim to allow free movement by hand.
4. To set the tension, turn the adjusting bolts ½ turn only on each adjusting bolt, equally, until the desired tension is achieved.

**CAUTION: Over tensioning of the snubber reduces friction sleeve life.**

5. To replace the friction sleeve, first loosen the adjusting bolts so the pressure plate bearing, spring washer, and the housing can be remove, then pry off using a bar on each side. Heat may be required.
6. Apply thin even coat of loctite 620 (or equivalent) to core and inner friction sleeve surface before installation of sleeve.
7. **IMPORTANT: All service points on the snubber should be greased every 10 hours. (friction sleeve: Grease B3T-1015G only).**

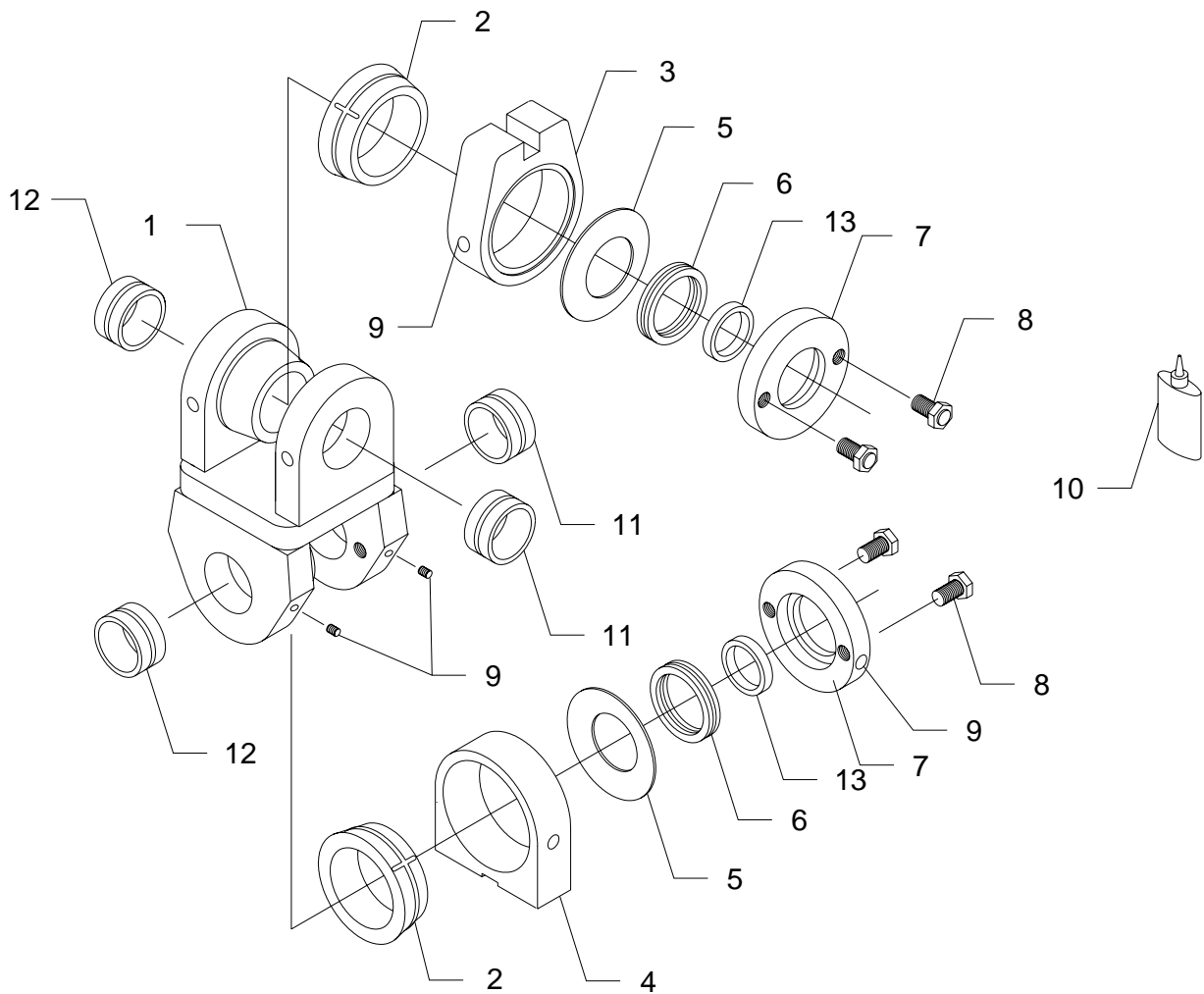
Greases with 5% - 6% MOLY are recommended:  
Military Spec. MIL G23549C  
-Lubriplate 176           5<sup>0</sup>F./-15<sup>0</sup>C.  
-Lubriplate 3000         15<sup>0</sup>F./-9.5<sup>0</sup>C.  
-Lubriplate 3000w       -30<sup>0</sup>F./-34.5<sup>0</sup>C.  
-or EQUIVALENT

**INTERNAL MOUNT**

**B31000HD-1**

USE WITH ROTOBEC – 2" PINS  
MODELS 3250 / 9150 / 24000 / 26000  
TRANS-GESCO TG88 & ROTOBEC ROTATOR

ROTOBEC RT252 & RT504 ROTATIONS  
\*\*Requires Rotobec # 891-0006 Pin & Spacer Kit\*\*



**INTERNAL MOUNT**

**B31000HD-1**

USE WITH ROTOBEC – 2" PINS  
MODELS 3250 / 9150 / 24000 / 26000  
TRANS-GESCO TG88 & ROTOBEC ROTATOR

ROTOBEC RT252 & RT504 ROTATIONS  
\*\* Requires Rotobec # 891-0006 Pin & Spacer Kit\*\*

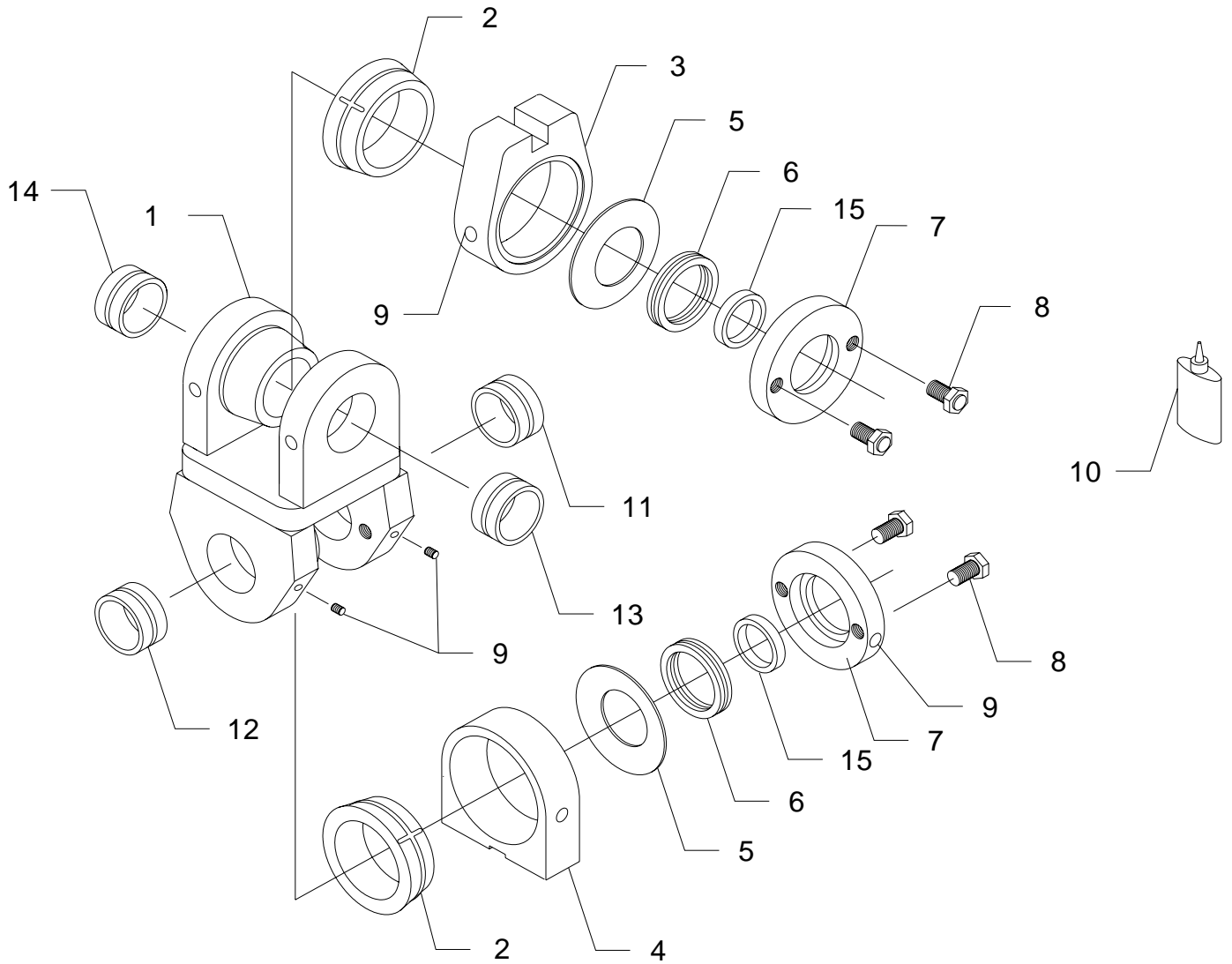
ITEM	PART#	DESCRIPTION	QTY
1	B3T-1005HD	LINK ASS'Y HEAVY DUTY	1
2	B3T-1015G	FRICTION SLEEVE (ZINC ALLOY ZA12)	2
OPT.	B3T-1175	FRICTION SLEEVE (COMPOSITE MATERIAL)	2
3	B3T-1135	SLOT HOUSING 1.030" SLOT	1
4	B3T-1140	FOOT HOUSING	1
5	B3T-1030	SPRING WASHER	2
6	B3T-1035	BEARING	2
7	B3T-1040	PRESSURE PLATE	2
8	B3T-1045	ADJUSTING BOLT	4
9	B3T-1130	ZERK	10
10	B3T-575	SLEEVE RETAINER LOCTITE 620 OR EQUIVALENT	1
11	B3T-1160S	BUSHING (2.008" I.D. x 1.125" LONG)	2
	B3T-1160	OPTIONAL, BUSHING HARD BRONZE	2
12	B3T-1070S	BUSHING (2.008" I.D. x 2.450" LONG)	2
	B3T-1070	OPTIONAL, BUSHING HARD BRONZE	2
13	B3T-1180	BEARING SEAL	2

**INTERNAL MOUNT**

**B3100HD-2**

USE WITH: TIMBCO FORWARDERS  
TF815B / TF815C / TF820C  
TIMBERPRO TB620 / TF820  
VALMET 380 / 385 HARVESTER  
PART # 01490761

INDEXATOR ROTATOR – US SERIES



**INTERNAL MOUNT**

**B31000HD-2**

USE WITH: TIMBCO FORWARDERS  
TF815B / TF815C / TF820C  
TIMBERPRO TB620 / TF820  
VALMET 380 / 385 HARVESTER HEAD

INDEXATOR ROTATOR – US SERIES

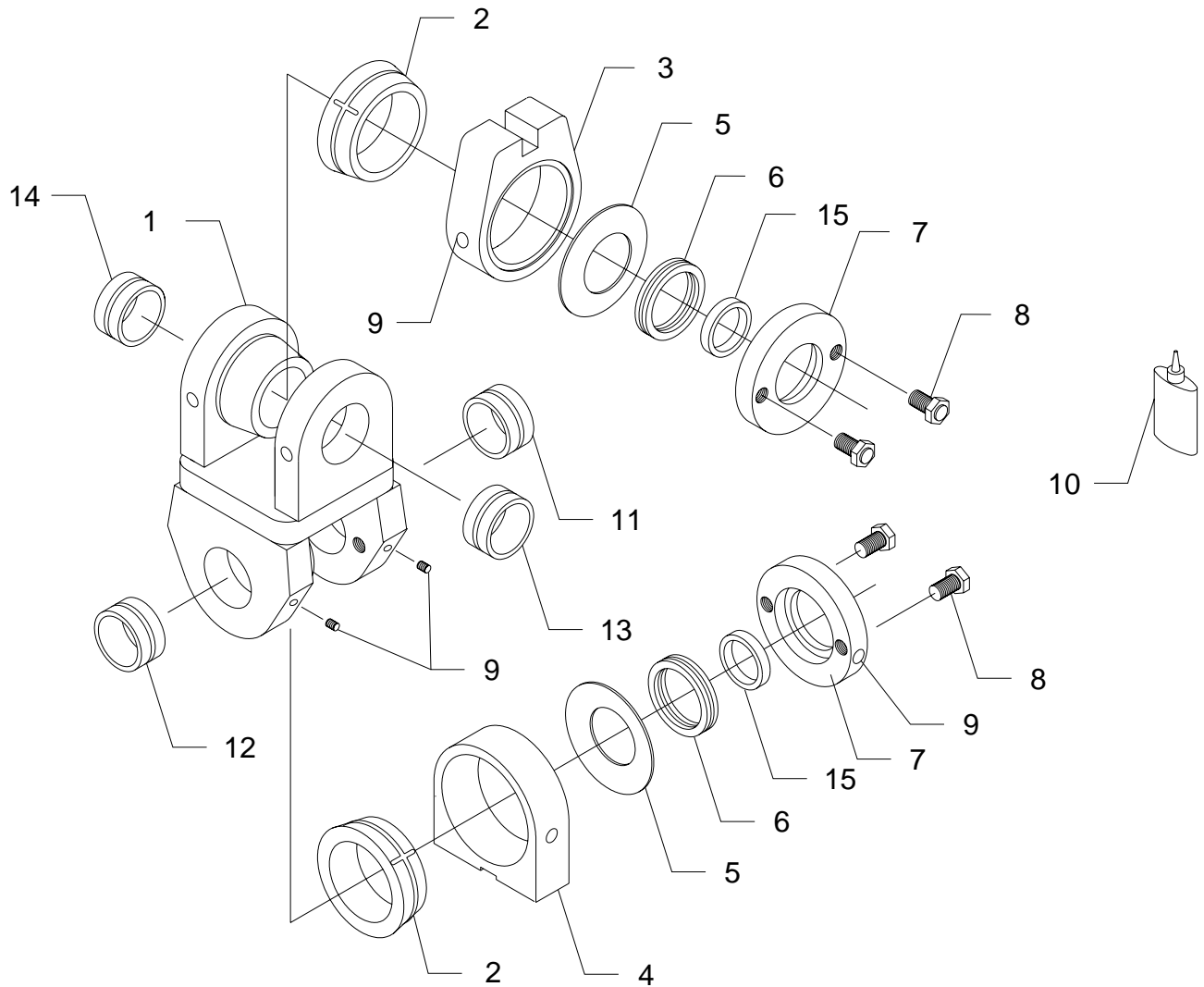
ITEM	PART#	DESCRIPTION	QTY
1	B3T-1005HD	LINK ASS'Y HEAVY DUTY	1
2	B3T-1015G	FRICTION SLEEVE (ZINC ALLOY ZA12)	2
OPT.	B3T-1175	FRICTION SLEEVE (COMPOSITE MATERIAL)	2
3	B3T-1135	SLOT HOUSING 1.030" SLOT	1
4	B3T-1140	FOOT HOUSING	1
5	B3T-1030	SPRING WASHER	2
6	B3T-1035	BEARING	2
7	B3T-1040	PRESSURE PLATE	2
8	B3T-1045	ADJUSTING BOLT	4
9	B3T-1130	ZERK	10
10	B3T-575	SLEEVE RETAINER LOCTITE 620 OR EQUIVALENT	1
11	B3T-1150S	BUSHING (2.060" I.D. x 1.125" LONG)	1
12	B3T-1085S	BUSHING (2.060" I.D. x 2.450" LONG)	1
13	B3T-1165S	BUSHING (1.758" I.D. x 1.125" LONG)	1
14	B3T-1125S	BUSHING (1.758" I.D. x 2.450" LONG)	1
15	B3T-1180	BEARING SEAL	2



**INTERNAL MOUNT**

**B3100HD-3**

USE WITH INDEXATOR ROTATOR  
GV11US / GV12US / GV15US / GV17US  
STICK BOOM PIN – 45 mm O.D.



**INTERNAL MOUNT**

**B31000HD-3**

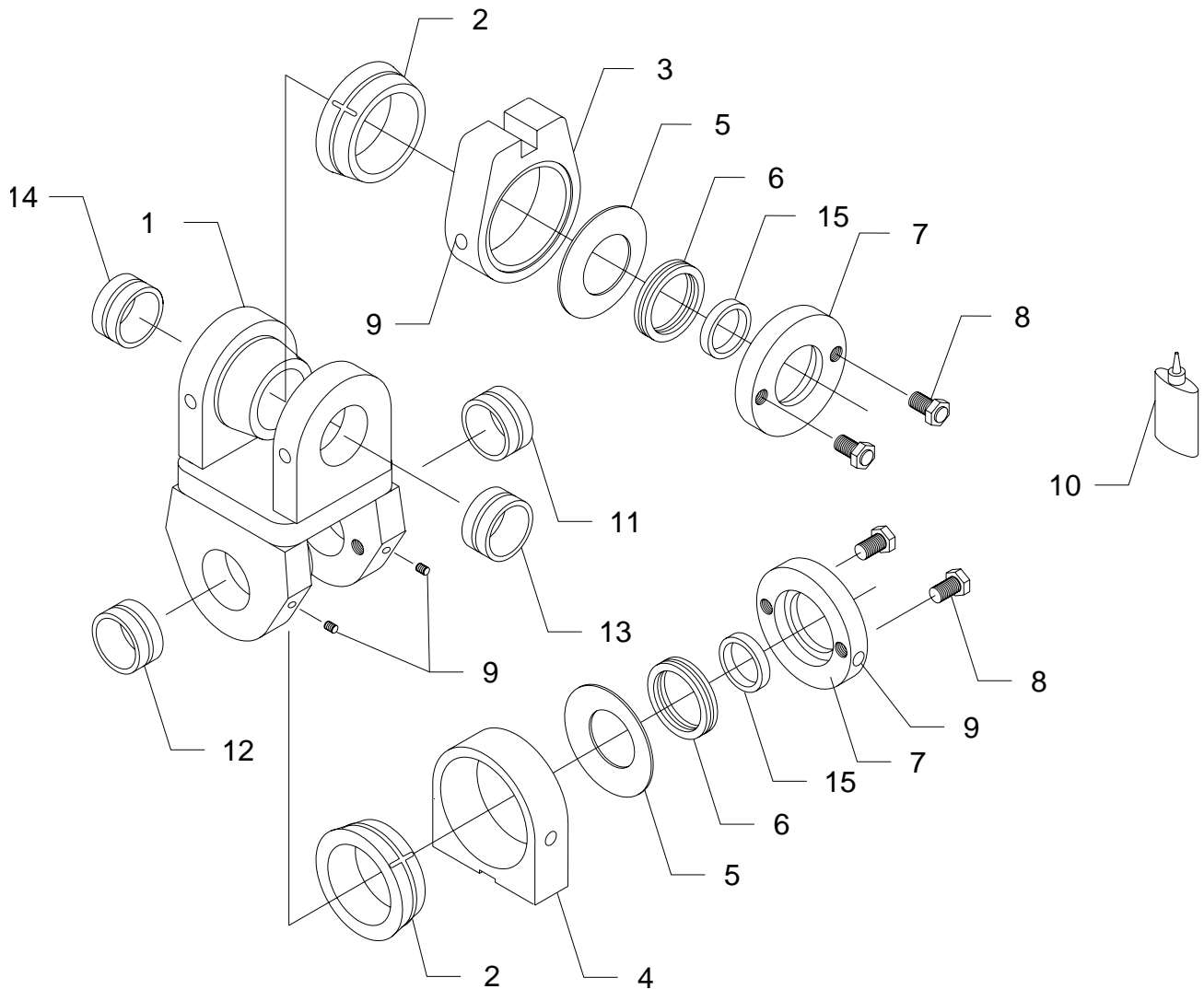
USE WITH INDEXATOR ROTATOR  
GV11US / GV12US / GV15US / GV17US  
STICK BOOM PIN – 45 mm O.D.

ITEM	PART#	DESCRIPTION	QTY
1	B3T-1005HD	LINK ASS'Y HEAVY DUTY	1
2	B3T-1015G	FRICTION SLEEVE (ZINC ALLOY ZA12)	2
OPT.	B3T-1175	FRICTION SLEEVE (COMPOSITE MATERIAL)	2
3	B3T-1135	SLOT HOUSING 1.030" SLOT	1
4	B3T-1140	FOOT HOUSING	1
5	B3T-1030	SPRING WASHER	2
6	B3T-1035	BEARING	2
7	B3T-1040	PRESSURE PLATE	2
8	B3T-1045	ADJUSTING BOLT	4
9	B3T-1130	ZERK	10
10	B3T-575	SLEEVE RETAINER LOCTITE 620 OR EQUIVALENT	1
11	B3T-1150S	BUSHING (2.060" I.D. x 1.125" LONG)	1
	B3T-1150	OPTIONAL, BUSHING HARD BRONZE	1
12	B3T-1085S	BUSHING (2.060" I.D. x 2.450" LONG)	1
	B3T-1085	OPTIONAL, BUSHING HARD BRONZE	1
13	B3T-1155S	BUSHING (45mm I.D. x 1.125" LONG)	1
	B3T-1155	OPTIONAL, BUSHING HARD BRONZE	1
14	B3T-1075S	BUSHING (45mm I.D. x 2.450" LONG)	1
	B3T-1075	OPTIONAL, BUSHING HARD BRONZE	1
15	B3T-1180	BEARING SEAL	2

**INTERNAL MOUNT**

**B31000HD-4**

USE WITH INDEXATOR ROTATORS  
GV11US / GV12US / GV15US / GV17US  
STICK BOOM PIN – 2" O.D.



**INTERNAL MOUNT**

**B31000HD-4**

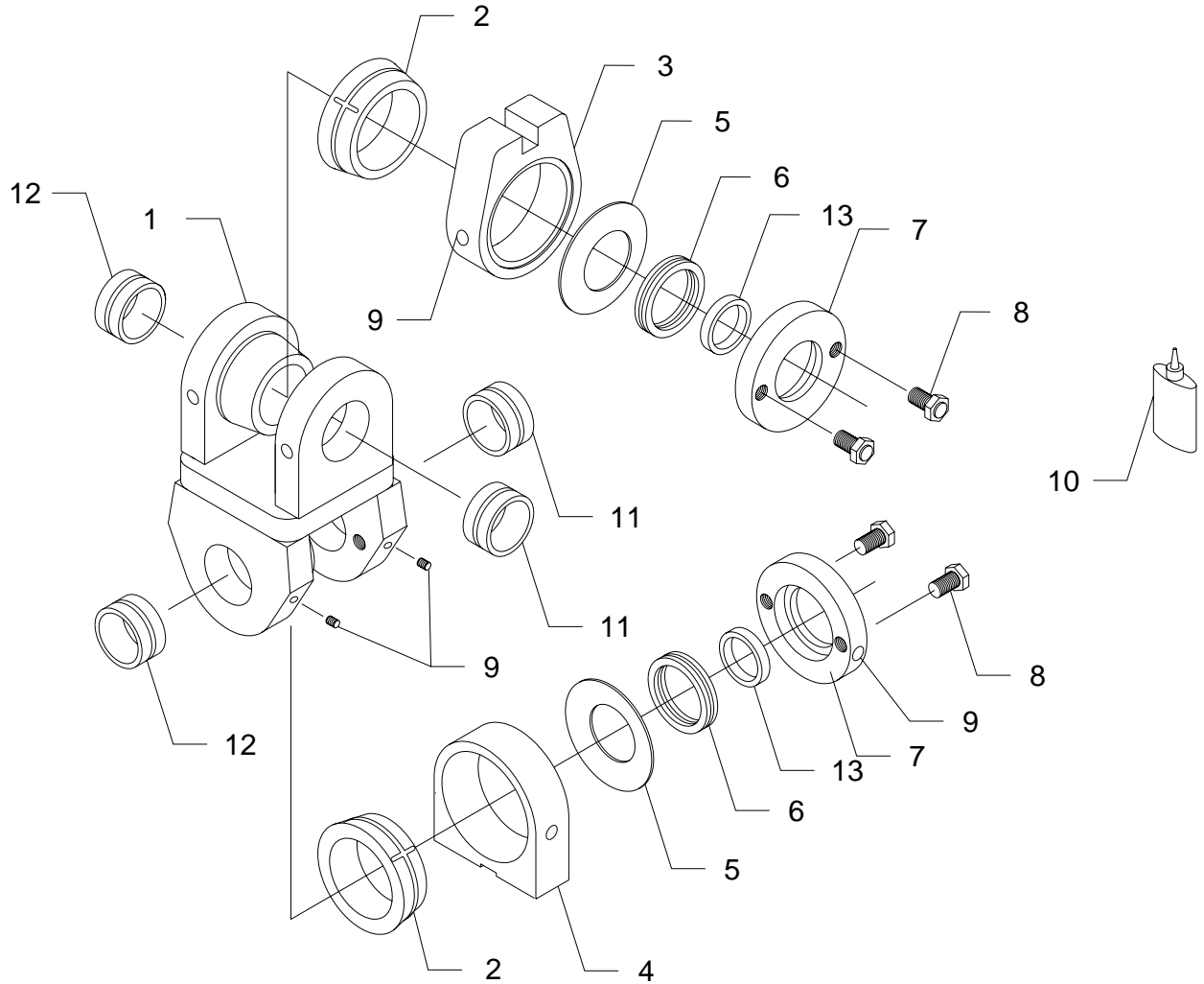
USE WITH INDEXATOR ROTATORS  
GV11US / GV12US / GV15US / GV17US  
STICK BOOM PIN – 2" O.D.

ITEM	PART#	DESCRIPTION	QTY
1	B3T-1005HD	LINK ASS'Y HEAVY DUTY	1
2	B3T-1015G	FRICTION SLEEVE (ZINC ALLOY ZA12)	2
OPT.	B3T-1175	FRICTION SLEEVE (COMPOSITE MATERIAL)	2
3	B3T-1135	SLOT HOUSING 1.030" SLOT	1
4	B3T-1140	FOOT HOUSING	1
5	B3T-1030	SPRING WASHER	2
6	B3T-1035	BEARING	2
7	B3T-1040	PRESSURE PLATE	2
8	B3T-1045	ADJUSTING BOLT	4
9	B3T-1130	ZERK	10
10	B3T-575	SLEEVE RETAINER LOCTITE 620 OR EQUIVALENT	1
11	B3T-1150S	BUSHING (2.060" I.D. x 1.125" LONG)	1
	B3T-1150	OPTIONAL, BUSHING HARD BRONZE	1
12	B3T-1085S	BUSHING (2.060" I.D. x 2.450" LONG)	1
	B3T-1085	OPTIONAL, BUSHING HARD BRONZE	1
13	B3T-1160S	BUSHING (2.008" I.D. x 1.125" LONG)	1
	B3T-1160	OPTIONAL, BUSHING HARD BRONZE	1
14	B3T-1070S	BUSHING (2.008" I.D. x 2.450" LONG)	1
	B3T-1070	OPTIONAL, BUSHING HARD BRONZE	1
15	B3T-1180	BEARING SEAL	2

**INTERNAL MOUNT**

**B31000HD-6**

USE WITH PRENTICE GRAPPLES / ROTATORS  
2-1/16" PINS TOP & BOTTOM



**INTERNAL MOUNT**

**B31000HD-6**

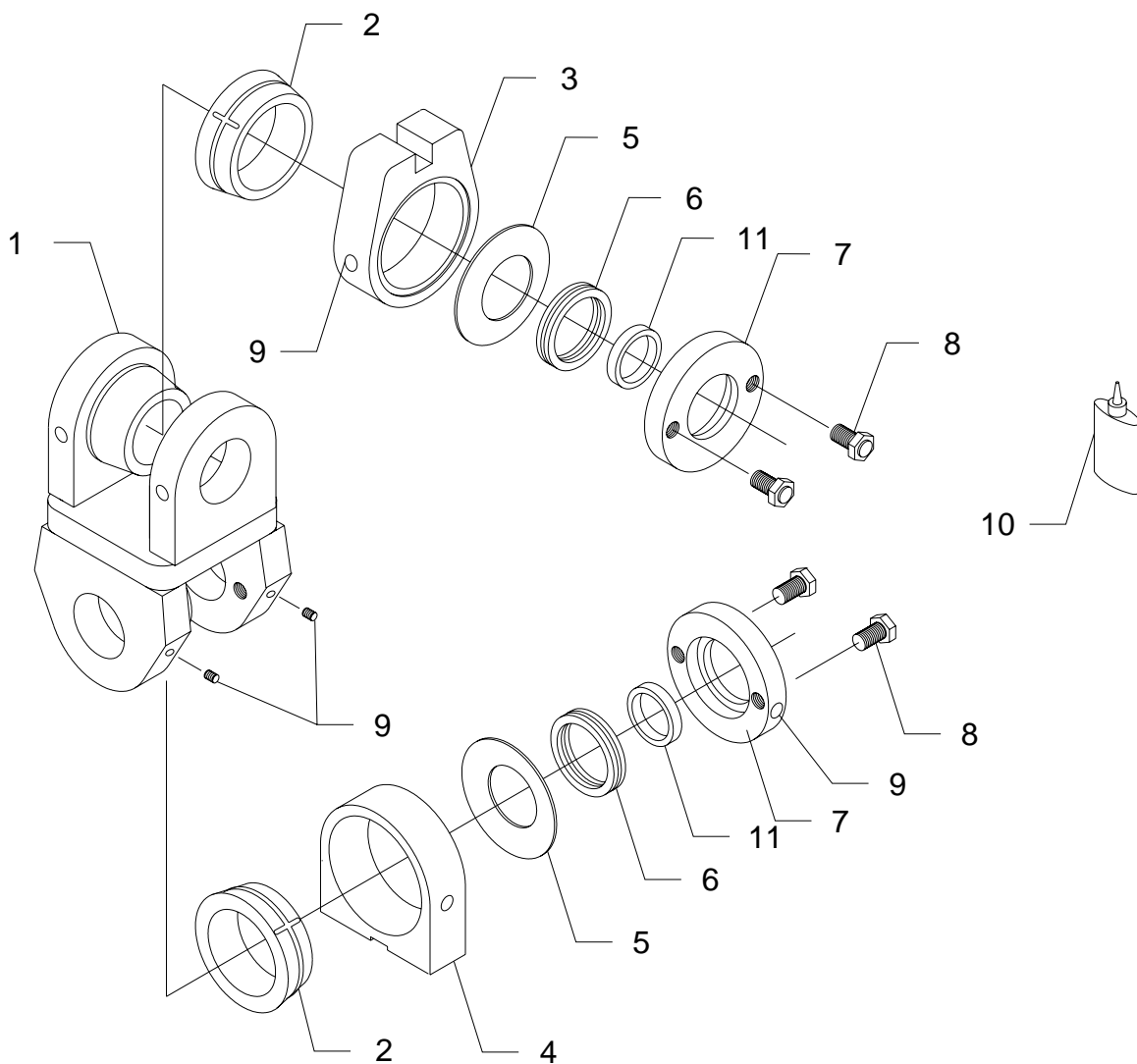
USE WITH PRENTICE GRAPPLES / ROTATORS  
2-1/16" PINS TOP & BOTTOM

ITEM	PART#	DESCRIPTION	QTY
1	B3T-1005HD	LINK ASS'Y HEAVY DUTY	1
2	B3T-1015G	FRICTION SLEEVE (ZINC ALLOY ZA12)	2
OPT.	B3T-1175	FRICTION SLEEVE (COMPOSITE MATERIAL)	2
3	B3T-1135	SLOT HOUSING 1.030" SLOT	1
4	B3T-1140	FOOT HOUSING	1
5	B3T-1030	SPRING WASHER	2
6	B3T-1035	BEARING	2
7	B3T-1040	PRESSURE PLATE	2
8	B3T-1045	ADJUSTING BOLT	4
9	B3T-1130	ZERK	10
10	B3T-575	SLEEVE RETAINER LOCTITE 620 OR EQUIVALENT	1
11	B3T-1150S	BUSHING (2.060" I.D. x 1.125" LONG)	2
	B3T-1150	OPTIONAL, BUSHING HARD BRONZE	2
12	B3T-1085S	BUSHING (2.060" I.D. x 2.450" LONG)	2
	B3T-1085	OPTIONAL, BUSHING HARD BRONZE	2
13	B3T-1180	BEARING SEAL	2

**INTERNAL MOUNT**

**B31000HD-8**

LINK ASSEMBLY \*\*LESS BUSHINGS\*\*  
QUADCO INTERNAL USE ONLY



**INTERNAL MOUNT**

**1000 SERIES**

**B31000HD-8**

LINK ASSEMBLY LESS PIN  
QUADCO INTERNAL USE ONLY

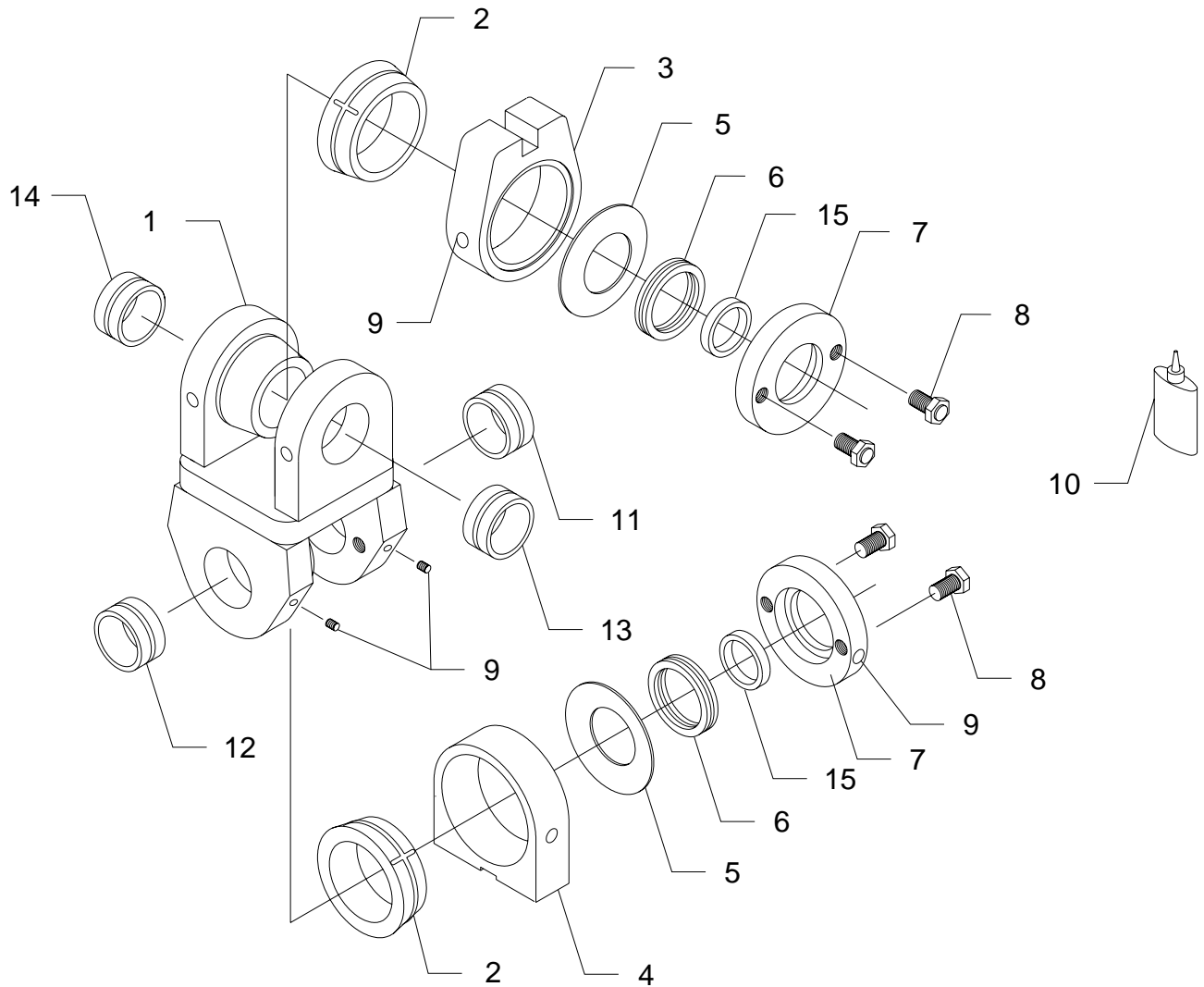
<b>ITEM</b>	<b>PART#</b>	<b>DESCRIPTION</b>	<b>QTY</b>
1	B3T-1005HD	LINK ASS'Y HEAVY DUTY	1
2	B3T-1015G	FRICTION SLEEVE (ZINC ALLOY ZA12)	2
OPT.	B3T-1175	FRICTION SLEEVE (COMPOSITE MATERIAL)	2
3	B3T-1135	SLOT HOUSING 1.030" SLOT	1
4	B3T-1140	FOOT HOUSING	1
5	B3T-1030	SPRING WASHER	2
6	B3T-1035	BEARING	2
7	B3T-1040	PRESSURE PLATE	2
8	B3T-1045	ADJUSTING BOLT	4
9	B3T-1130	ZERK	10
10	B3T-575	SLEEVE RETAINER LOCTITE 620 OR EQUIVALENT	1
11	B3T-1180	BEARING SEAL	2



**INTERNAL MOUNT**

**B31000HD-12**

USE WITH INDEXATOR ROTATOR  
GV11US / GV12US / GV15US / GV17US  
1250 CRANAB CRANE – 125 mm BETWEEN EARS



**INTERNAL MOUNT**

**B31000HD-12**

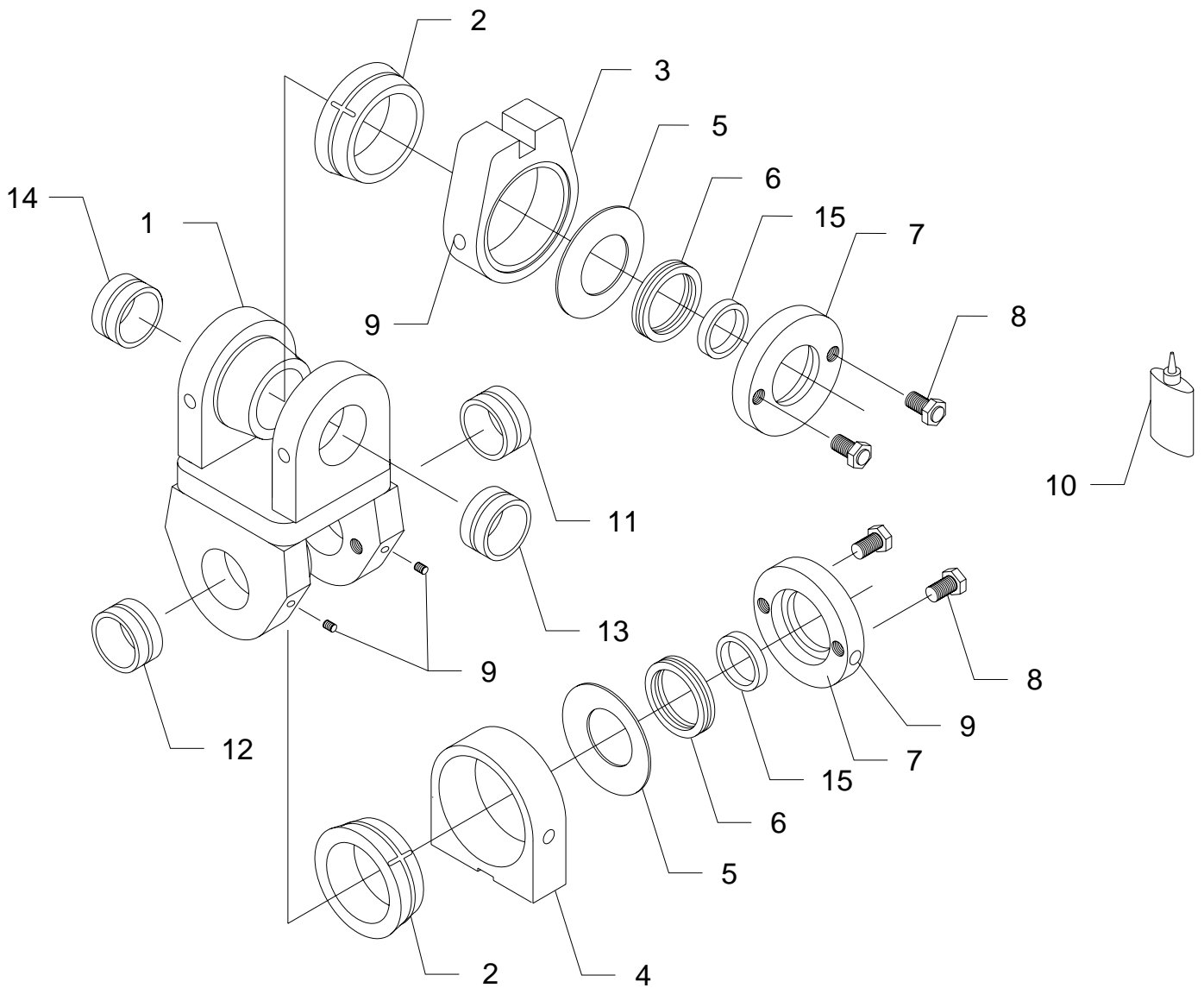
USE WITH INDEXATOR ROTATOR  
GV11US / GV12US / GV15US / GV17US  
1250 CRANAB CRANE – 125 mm BETWEEN EARS

ITEM	PART#	DESCRIPTION	QTY
1	B3T-1195	LINK ASS'Y HEAVY DUTY	1
2	B3T-1015G	FRICTION SLEEVE (ZINC ALLOY ZA12)	2
OPT.	B3T-1175	FRICTION SLEEVE (COMPOSITE MATERIAL)	2
3	B3T-1135	SLOT HOUSING 1.030" SLOT	1
4	B3T-1140	FOOT HOUSING	1
5	B3T-1030	SPRING WASHER	2
6	B3T-1035	BEARING	2
7	B3T-1040	PRESSURE PLATE	2
8	B3T-1045	ADJUSTING BOLT	4
9	B3T-1130	ZERK	10
10	B3T-575	SLEEVE RETAINER LOCTITE 620 OR EQUIVALENT	1
11	B3T-1150S	BUSHING (2.060" I.D. x 1.125" LONG)	1
	B3T-1150	OPTIONAL, BUSHING HARD BRONZE	1
12	B3T-1085S	BUSHING (2.060" I.D. x 2.450" LONG)	1
	B3T-1085	OPTIONAL, BUSHING HARD BRONZE	1
13	B3T-1200	BUSHING (45mm I.D. x 0.925" LONG) BRONZE	1
14	B3T-1205	BUSHING (45mm I.D. x 2.250" LONG) BRONZE	1
15	B3T-1180	BEARING SEAL	2

**INTERNAL MOUNT**

**B31000HD-13**

USE WITH TIMBCO FORWARDERS  
TF815B / TF815C / TF820C  
TOP PIN 1 3/4"  
ROTOBEC ROTATOR 2" PIN



**INTERNAL MOUNT**

**B31000HD-13**

USE WITH TIMBCO FORWARDERS  
TF815B / TF815C / TF820C  
TOP PIN 1 3/4"  
ROTOBEC ROTATOR 2" PIN

ITEM	PART#	DESCRIPTION	QTY
1	B3T-1005HD	LINK ASS'Y HEAVY DUTY	1
2	B3T-1015G	FRICTION SLEEVE (ZINC ALLOY ZA12)	2
OPT.	B3T-1175	FRICTION SLEEVE (COMPOSITE MATERIAL)	2
3	B3T-1135	SLOT HOUSING 1.030" SLOT	1
4	B3T-1140	FOOT HOUSING	1
5	B3T-1030	SPRING WASHER	2
6	B3T-1035	BEARING	2
7	B3T-1040	PRESSURE PLATE	2
8	B3T-1045	ADJUSTING BOLT	4
9	B3T-1130	ZERK	10
10	B3T-575	SLEEVE RETAINER LOCTITE 620 OR EQUIVALENT	1
11	B3T-1160S	BUSHING (2.008" I.D. x 1.125" LONG)	1
12	B3T-1070S	BUSHING (2.008" I.D. x 2.450" LONG)	1
13	B3T-1165S	BUSHING (1.758" I.D. x 1.125" LONG)	1
14	B3T-1125S	BUSHING (1.758" I.D. x 2.450" LONG)	1
15	B3T-1180	BEARING SEAL	2