

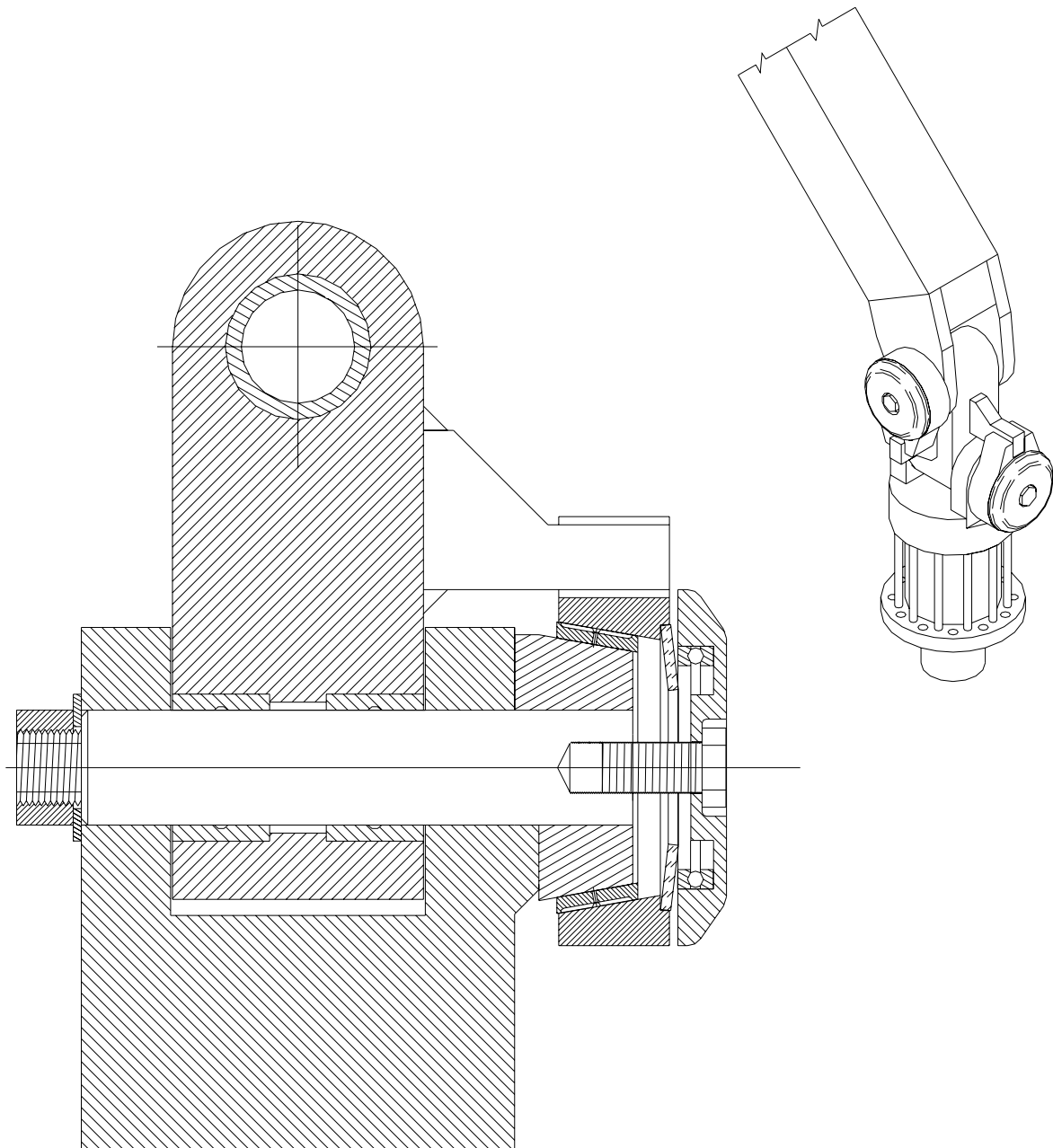
SECTION 4

350 SERIES

| | |
|------|---|
| 4-2 | <u>Snubber Assembly - Parts</u> |
| 4-3 | <u>O.E.M. Pinhead Styles</u> |
| 4-4 | <u>Stick Boom Mount</u> |
| 4-5 | <u>Rotate Yoke Mount</u> |
| 4-5 | <u>Service and Adjustment</u> |
| 4-6 | <u>B3350</u> |
| 4-7 | <u>B3350-1</u> |
| 4-8 | <u>B3350-2</u> |
| 4-9 | <u>B3350-3</u> |
| 4-10 | <u>B3350-4</u> |
| 4-11 | <u>B3350-5</u> |
| 4-12 | <u>B3350-6</u> |
| 4-13 | <u>B3350-7</u> |
| 4-14 | <u>B3350-8</u> |
| 4-15 | <u>B3350-9</u> |
| 4-16 | <u>B3350-10</u> |
| 4-17 | <u>B3350-11</u> |

SNUBBER ASSEMBLY – PARTS

INDEXATOR REPLACEMENT – GV11, GV104, GV12



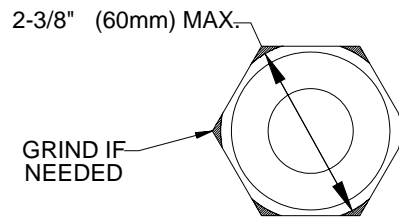
EXTERNAL MOUNT

MOUNTING AND OPERATIONAL INSTRUCTIONS

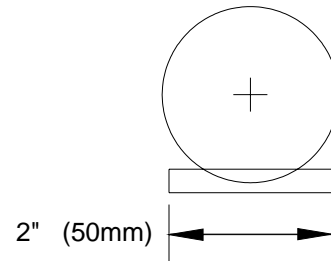
O.E.M. PINHEAD STYLES

Original pin heads must be smaller than 2 1/2" (63 mm) To allow passage of pin through the core during attachment disassembly.

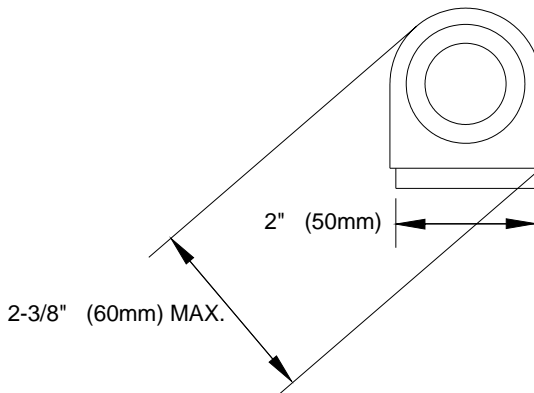
- A)** Hex style pin heads 2 1/2" across corners or larger must have corners of hex ground to 2 3/8" (60 mm) or less.



- B)** Pin heads with a milled flat area rest against external key stock to prevent pin from turning during assembly. This key stock must be short enough, 2" (50 mm) maximum, to fit under core when the core is welded into position.



- C)** Pinheads with a flat anchor larger than 2 1/2" (63 mm.) can be trimmed and ground. *note* a flat portion must be retained to stop pin from turning during assembly. Key stock stop maximum 2" (50 mm) long allowing core to be welded into position.

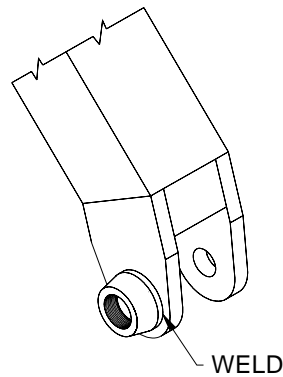


EXTERNAL MOUNT

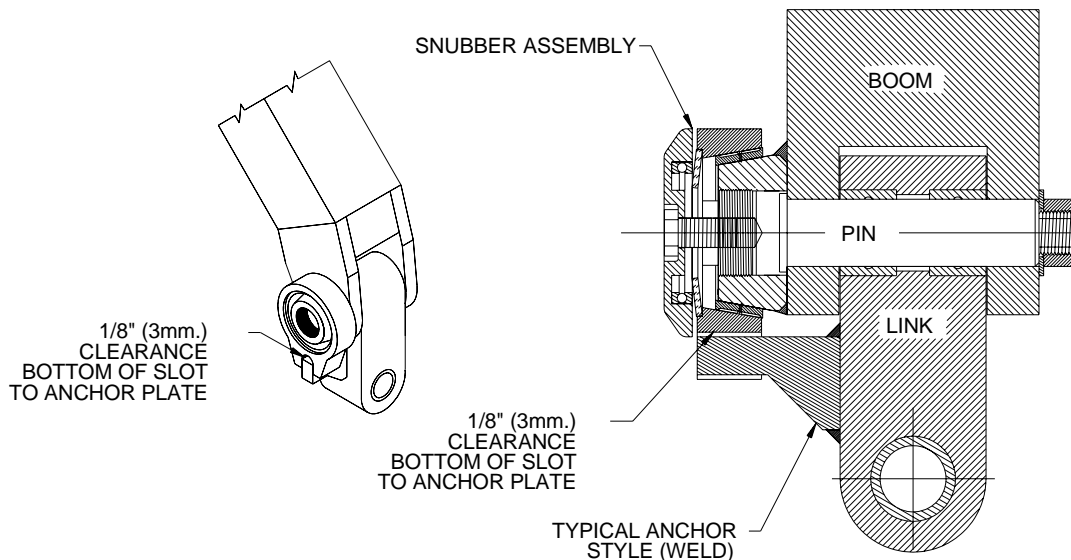
MOUNTING AND OPERATIONAL INSTRUCTIONS

STICK BOOM MOUNT

- 1) Center snubber core around head of pin and tack weld into position. Ensure head of pin can travel through center of the core without interference. Protect taper surface of core from weld splatter and weld core to boom with 7018 low hydrogen rod, or ARCTEC 223 XC, minimum 2 passes.



- 2) Assemble snubber with slot style housing facing down parallel to link. An anchor must be cut from 1" (NORTH AMERICA) 25 mm (EUROPE) steel plate and welded to link. Maintain 1/8" (3 mm) clearance, between bottom of housing slot and top of anchor, allowing full engagement of anchor.
**Ensure anchor does not interfere with rotate yoke & crane nose during side to side travel of attachment.



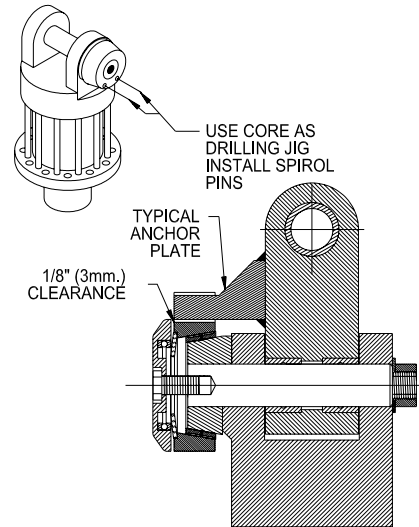
EXTERNAL MOUNT

MOUNTING AND OPERATIONAL INSTRUCTIONS

GV11, GV104, GV12

ROTATE YOKE MOUNT

- 3) Remove original pin. Install core and pin assembly with inside flat surface of core mating to flat edged pin lock on yoke ear. *NOTE* some rotators may require removal of name plate or grinding of ear to ensure full contact of core and yoke ear.
- 4) Drill 2 - 10mm holes thru yoke ear using holes in core as drill guide. Install 10 mm SPIROL pins provided to lock core to yoke ear.
- 5) Cut housing anchor from 1" plate (NORTH AMERICA) 25 mm (EUROPE) and weld to link bar. Allow 1/8" (3 mm) clearance between bottom of housing slot and bottom of anchor.



OPTIONAL: Install QUADCO solid steel link.

SERVICE AND ADJUSTMENT

- During final assembly of snubber apply LOCTITE 620 or equivalent to core and inner surface of friction sleeve and install.
- Apply liberal amount of moly based grease to outer surface of friction sleeve and thrust bearing.**
- ** For B3T-1175 composite sleeve, install dry.
- To set tension, tighten end-cap bolt.

CAUTION: Only tension snubber to maintain adequate control of attachment, dependant upon application and attachment weight.
Over tensioning of snubber reduces friction sleeve life.

IMPORTANT: All service points on the snubber should be greased every 10 hours.
(Friction Sleeve: grease B3T-1015G only)

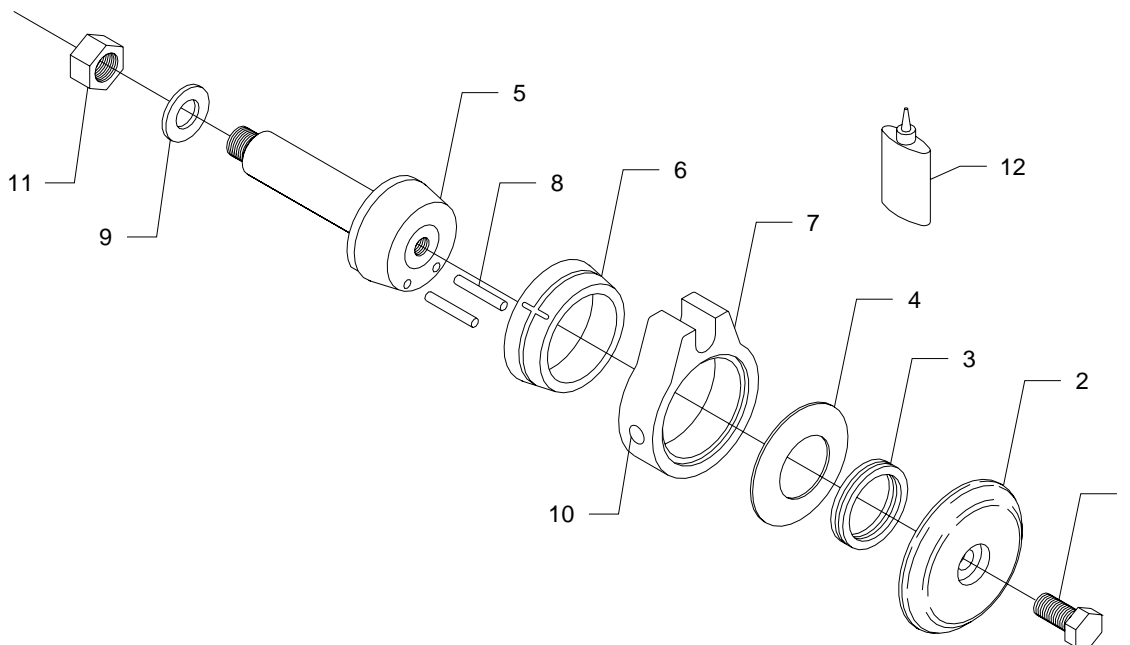
Greases with 5% - 6% MOLY are recommended:
Military Spec. MIL G23549C
-Lubriplate 176 5⁰F./-15⁰C.
-Lubriplate 3000 15⁰F./-9.5⁰C.
-Lubriplate 3000w -30⁰F./-34.5⁰C.
-or EQUIVALENT

EXTERNAL MOUNT

350 SERIES

B3350

USE WITH INDEXATOR ROTATORS
GV11, GV104, GV12
NORTH AMERICA ONLY



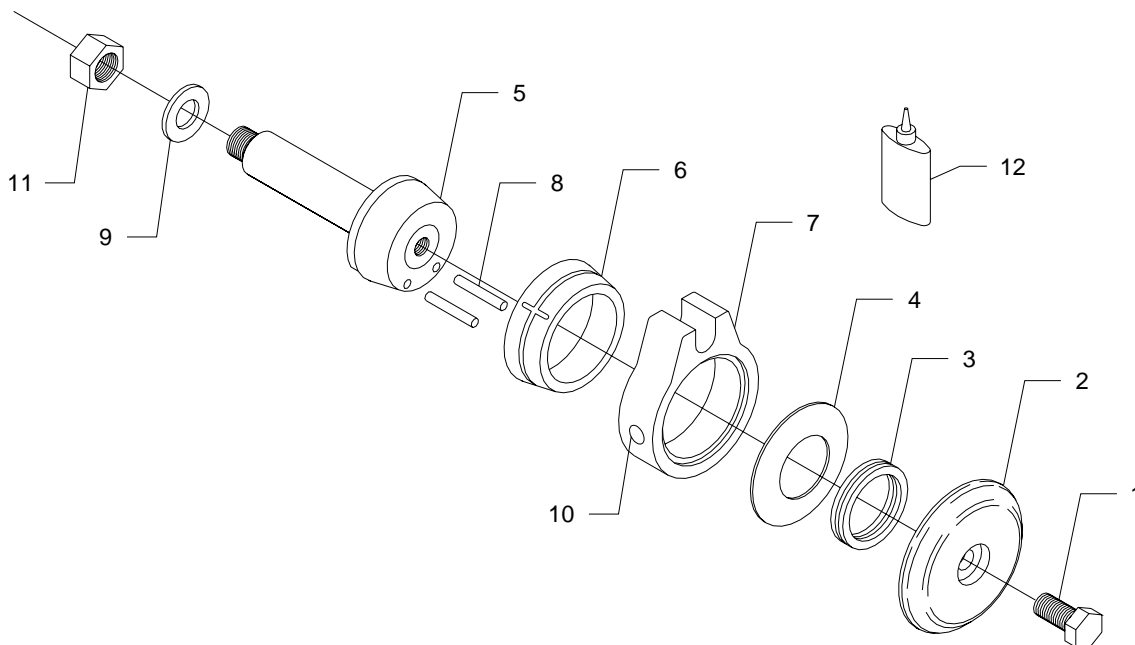
| ITEM | PART# | DESCRIPTION | QTY |
|------|----------|---|-----|
| 1 | B3T-440 | BOLT (M16 x 1.5 x 50 mm LONG -10.9) | 1 |
| 2 | B3T-430 | END CAP | 1 |
| 3 | B3T-1035 | BEARING | 1 |
| 4 | B3T-1030 | SPRING WASHER, 1 st CONCAVE TO HOUSING, 2&3 CONCAVE - FACE TO FACE | 3 |
| 5 | B3T-340 | CORE ASS'Y (35 mm PIN O.D.) | 1 |
| 6 | B3T-1015 | FRICITION SLEEVE (ZINC ALLOY ZA12) | 1 |
| OPT. | B3T-1175 | FRICITION SLEEVE (COMPOSITE MATERIAL) | 1 |
| 7 | B3T-1020 | HOUSING (1.032" SLOT) | 1 |
| 8 | B3T-375 | SPIROL PIN (M10 x 60 mm LONG) | 2 |
| 9 | B3T-450 | WASHER | 1 |
| 10 | B3T-1130 | ZERK | 2 |
| OPT | B3T-1190 | PLUG, USE WITH B3T-1175 COMPOSITE SLEEVE | 2 |
| 11 | B3T-535 | NUT (M30 x 1.5 NYLOCK JAMNUT) | 1 |
| 12 | B3T-575 | SLEEVE RETAINER, LOCTITE 620 OR EQUIVALENT | 1 |

EXTERNAL MOUNT

350 SERIES

B3350-1

EUROPE ONLY - USE WITH INDEXATOR ROTATORS
GV6, GV11, GV104, GV12



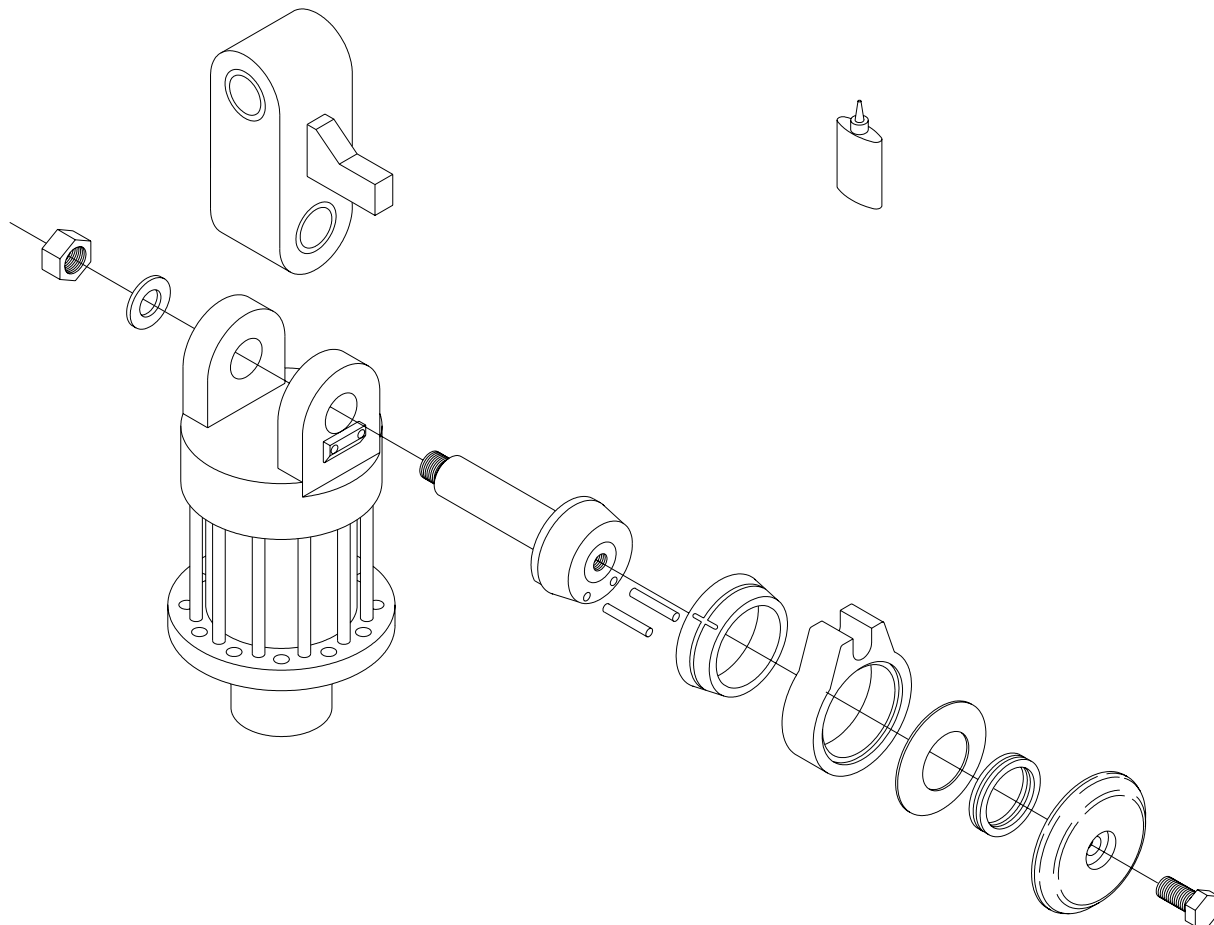
| ITEM | PART# | DESCRIPTION | QTY |
|------|-----------|--|-----|
| 1 | B3T-440 | BOLT (M16 x 1.5 x 50 mm LONG -10.9) | 1 |
| 2 | B3T-430 | END CAP | 1 |
| 3 | B3T-1035 | BEARING | 1 |
| 4 | B3T-1030 | SPRING WASHER, 1 ST CONCAVE TO HOUSING, 2&3 CONCAVE - FACE TO FACE. | 3 |
| 5 | B3T-340 | CORE ASS'Y (35 mm PIN O.D.) | 1 |
| 6 | B3T-1015G | FRICTION SLEEVE (ZINC ALLOY ZA12) | 1 |
| OPT. | B3T-1175 | FRICTION SLEEVE (COMPOSITE MATERIAL) | 1 |
| 7 | B3T-520 | HOUSING (25 mm SLOT) | 1 |
| 8 | B3T-375 | SPIROL PIN (M10 x 60 mm LNG.) | 2 |
| 9 | B3T-450 | WASHER | 1 |
| 10 | B3T-1130 | ZERK | 2 |
| OPT. | B3T-1190 | PLUG, USE WITH B3T-1175 COMPOSITE SLEEVE | 2 |
| 11 | B3T-535 | NUT (M30 x 1.5 NYLOCK JAMNUT) | 1 |
| 12 | B3T-575 | SLEEVE RETAINER LOCTITE 620 OR EQUIVALENT | 1 |

EXTERNAL MOUNT

350 SERIES

B3350- 2

NORTH AMERICA - USE WITH INDEXATOR ROTATORS GV6, GV11, GV104, GV12
 LINK 80 mm WIDE @ ROTATOR EARS, 35 mm BUSHING I.D.
 LINK 80 mm WIDE @ CRANE NOSE, 35 mm BUSHING I.D.
 1 DIRECTION, SIDE TO SIDE



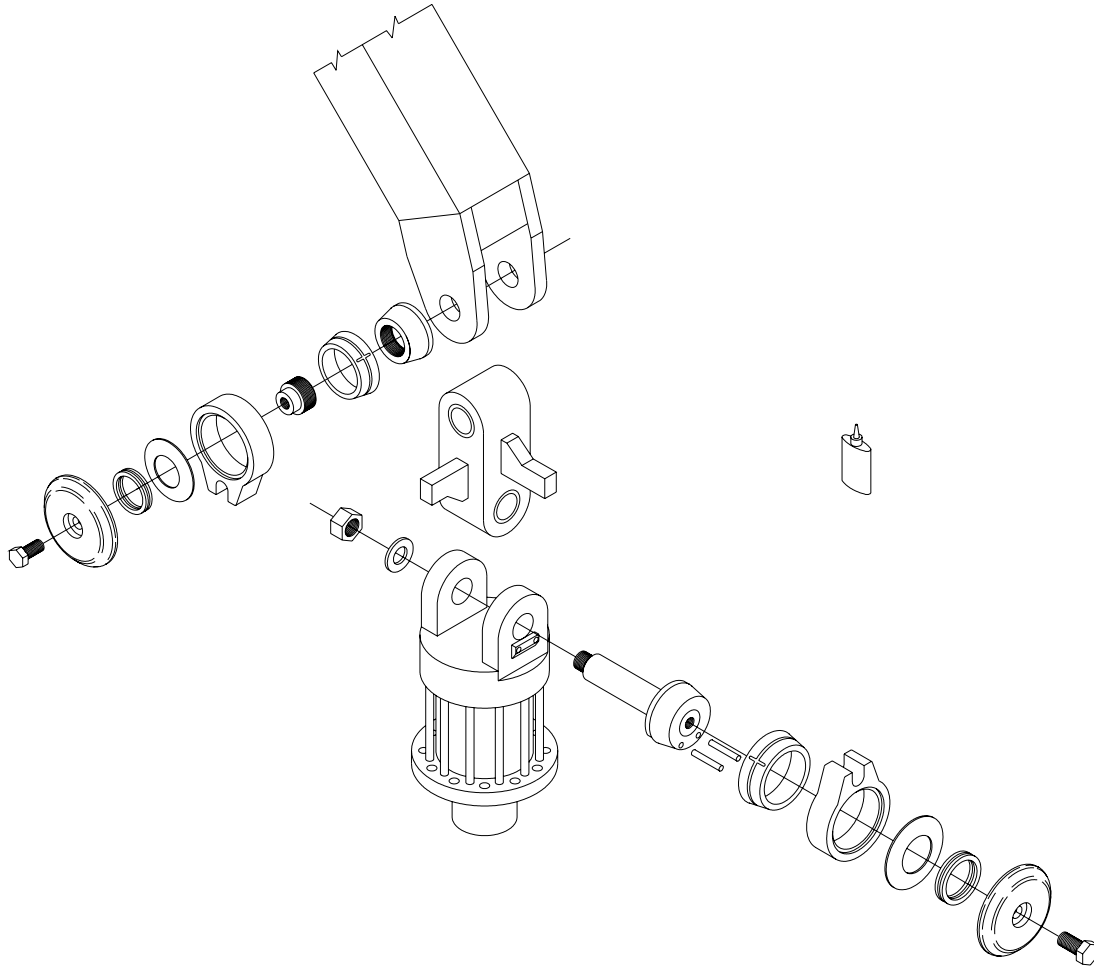
| ITEM | PART# | DESCRIPTION | QTY |
|------|---------|---|-----|
| 1 | B3350 | SNUBBER ASSEMBLY, 35 mm PIN (1.032" SLOT) | 1 |
| 2 | B3T-475 | LINK, 80/35 mm – 80/35 mm 190 PIN CENTERS | 1 |
| | B3T-465 | BUSHING, 35mm I.D. | 4 |

EXTERNAL MOUNT

350 SERIES

B3350- 3

NORTH AMERICA - USE WITH INDEXATOR ROTATORS GV6, GV11, GV104, GV12
 LINK 80 mm WIDE @ ROTATOR EARS, 35 mm BUSHING I.D.
 LINK 80 mm WIDE @ CRANE NOSE, 35 mm BUSHING I.D.



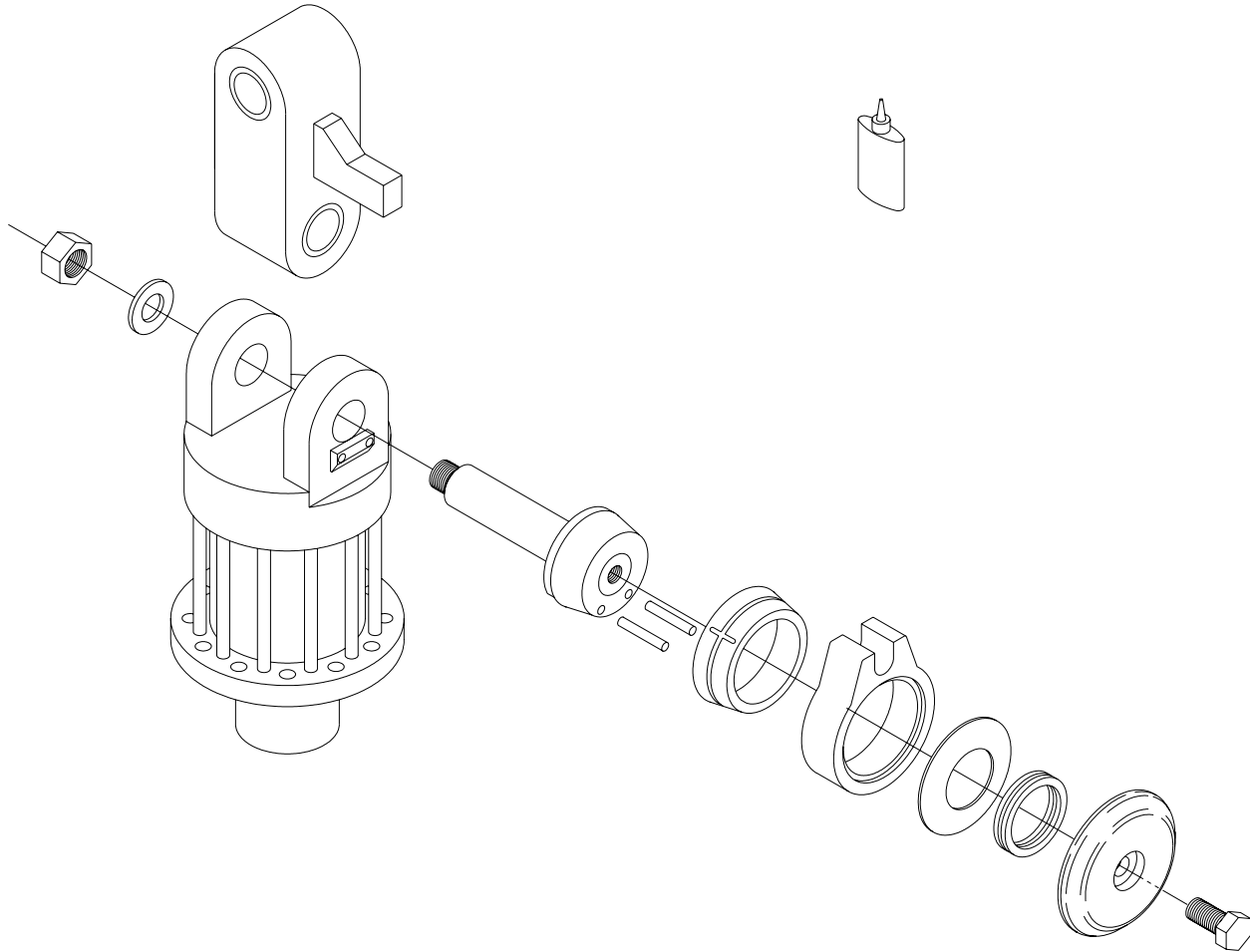
| ITEM | PART# | DESCRIPTION | QTY |
|------|---------|---|-----|
| 1 | B3350 | SNUBBER ASSEMBLY, 35 mm PIN (1.032" SLOT) | 1 |
| 2 | B3T-475 | LINK, 80/35 mm – 80/35 mm 190 PIN CENTERS | 1 |
| | B3T-465 | BUSHING, 35 mm I.D. | 4 |
| 3 | B3300 | SNUBBER ASEMBLY, WELD ON (1.032" SLOT) 16mm BOLT | 1 |

EXTERNAL MOUNT

350 SERIES

B3350- 4

NORTH AMERICA - USE WITH INDEXATOR ROTATORS GV6, GV11, GV104, GV12
 LINK 80 mm WIDE @ ROTATOR EARS, 35 mm BUSHING I.D.
 LINK 100 mm WIDE @ CRANE NOSE, 45 mm BUSHING I.D.
 1 DIRECTION, SIDE TO SIDE



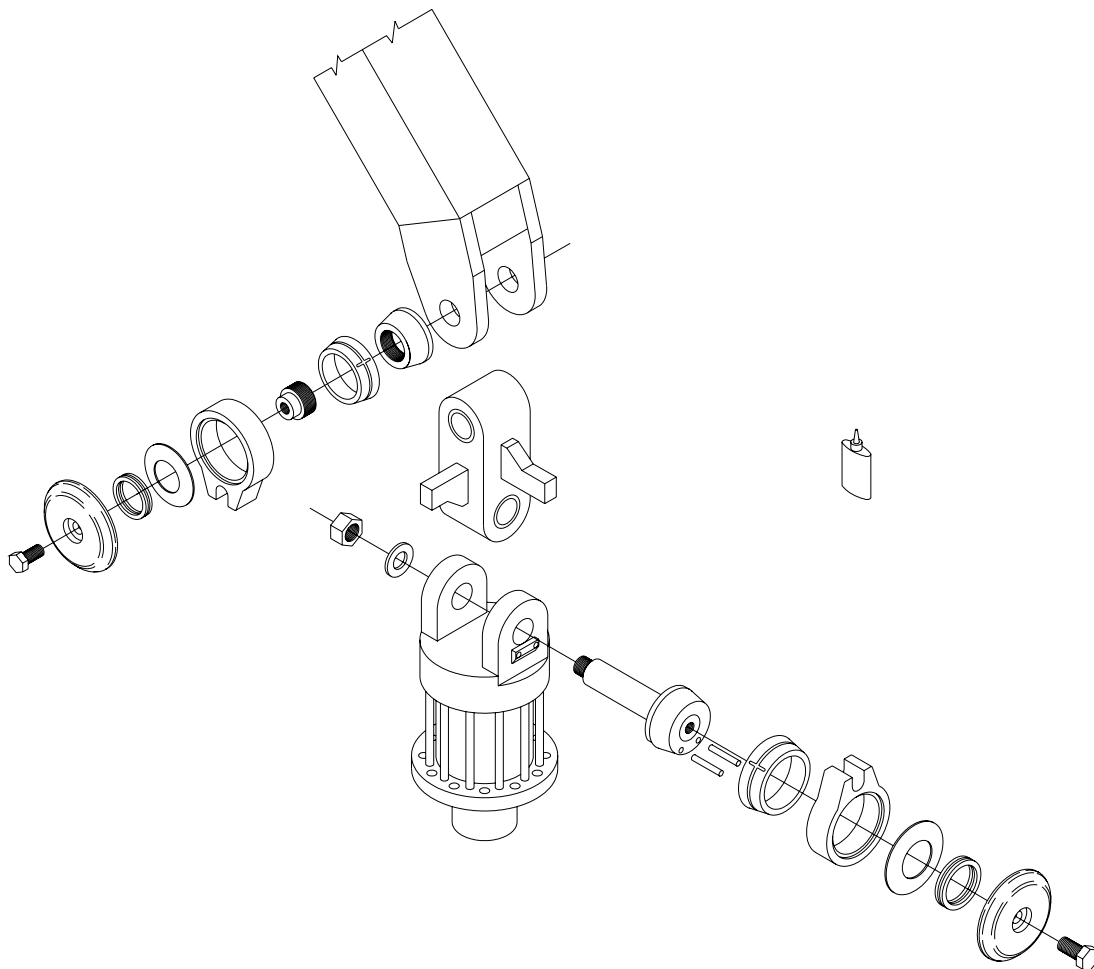
| ITEM | PART# | DESCRIPTION | QTY |
|------|---------|--|-----|
| 1 | B3350 | SNUBBER ASSEMBLY, 35 mm PIN (1.032" SLOT) | 1 |
| 2 | B3T-480 | LINK, 80/35 mm – 100/45 mm 190 PIN CENTERS | 1 |
| | B3T-465 | BUSHING, 35 mm I.D. | 2 |
| | B3T-470 | BUSHING, 45 mm I.D. | 2 |

EXTERNAL MOUNT

350 SERIES

B3350- 5

NORTH AMERICA - USE WITH INDEXATOR ROTATORS GV6, GV11, GV104, GV12
 LINK 80 mm WIDE @ ROTATOR EARS, 35 mm BUSHING I.D.
 LINK 100 mm WIDE @ CRANE NOSE, 45 mm BUSHING I.D.



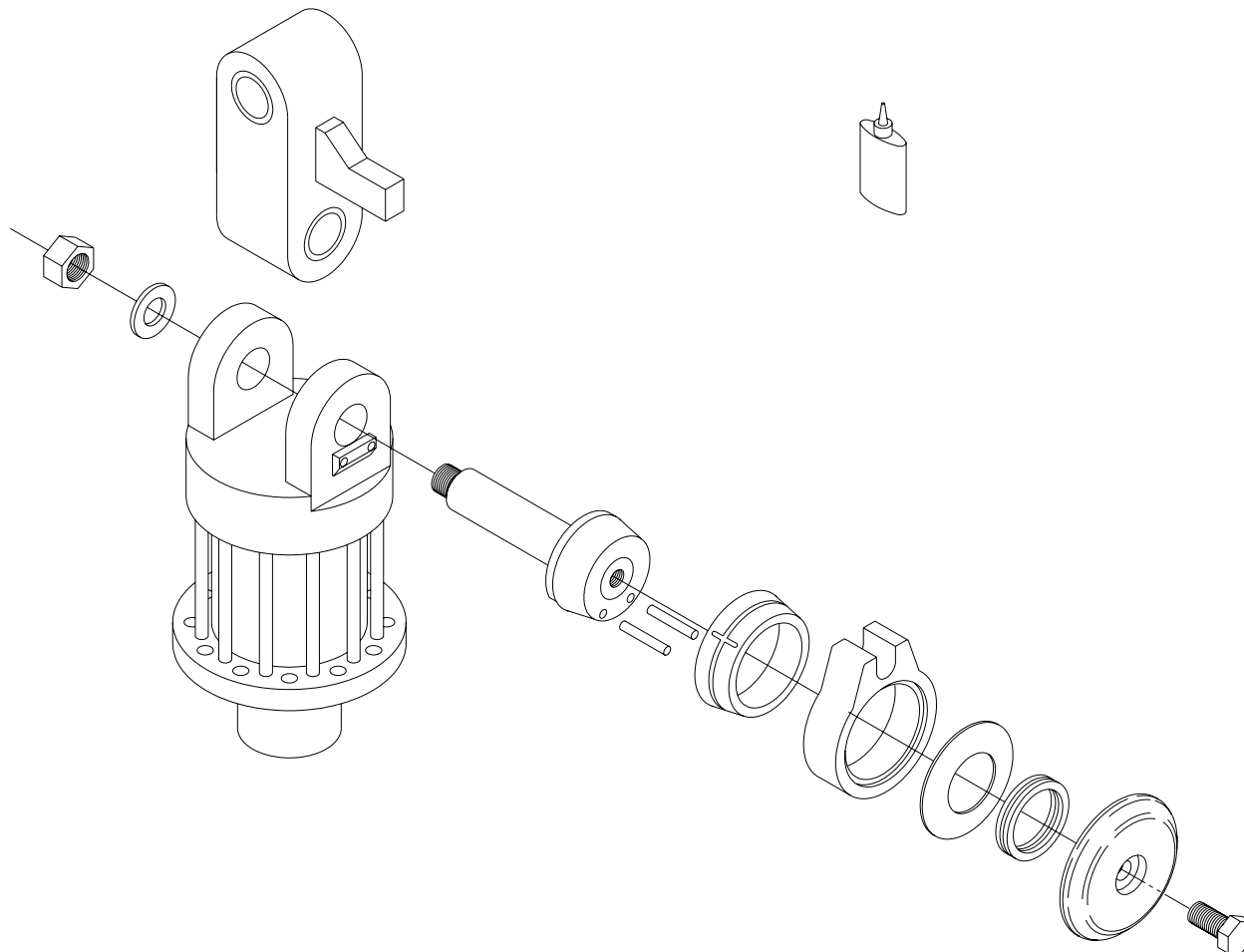
| ITEM | PART# | DESCRIPTION | QTY |
|------|---------|---|-----|
| 1 | B3350 | SNUBBER ASSEMBLY, 35 mm PIN (1.032" SLOT) | 1 |
| 2 | B3T-480 | LINK, 80/35 mm – 100/45 mm 190 PIN CENTERS | 1 |
| | B3T-465 | BUSHING, 35 mm I.D. | 2 |
| | B3T-470 | BUSHING, 45 mm I.D. | 2 |
| 3 | B3300 | SNUBBER ASEMBLY, WELD ON (1.032" SLOT) 16mm BOLT | 1 |

EXTERNAL MOUNT

350 SERIES

B3350- 6

EUROPE - USE WITH INDEXATOR ROTATORS GV6, GV11, GV104, GV12
 LINK 80 mm WIDE @ ROTATOR EARS, 35 mm BUSHING I.D.
 LINK 80 mm WIDE @ CRANE NOSE, 35 mm BUSHING I.D.
 1 DIRECTION, SIDE TO SIDE



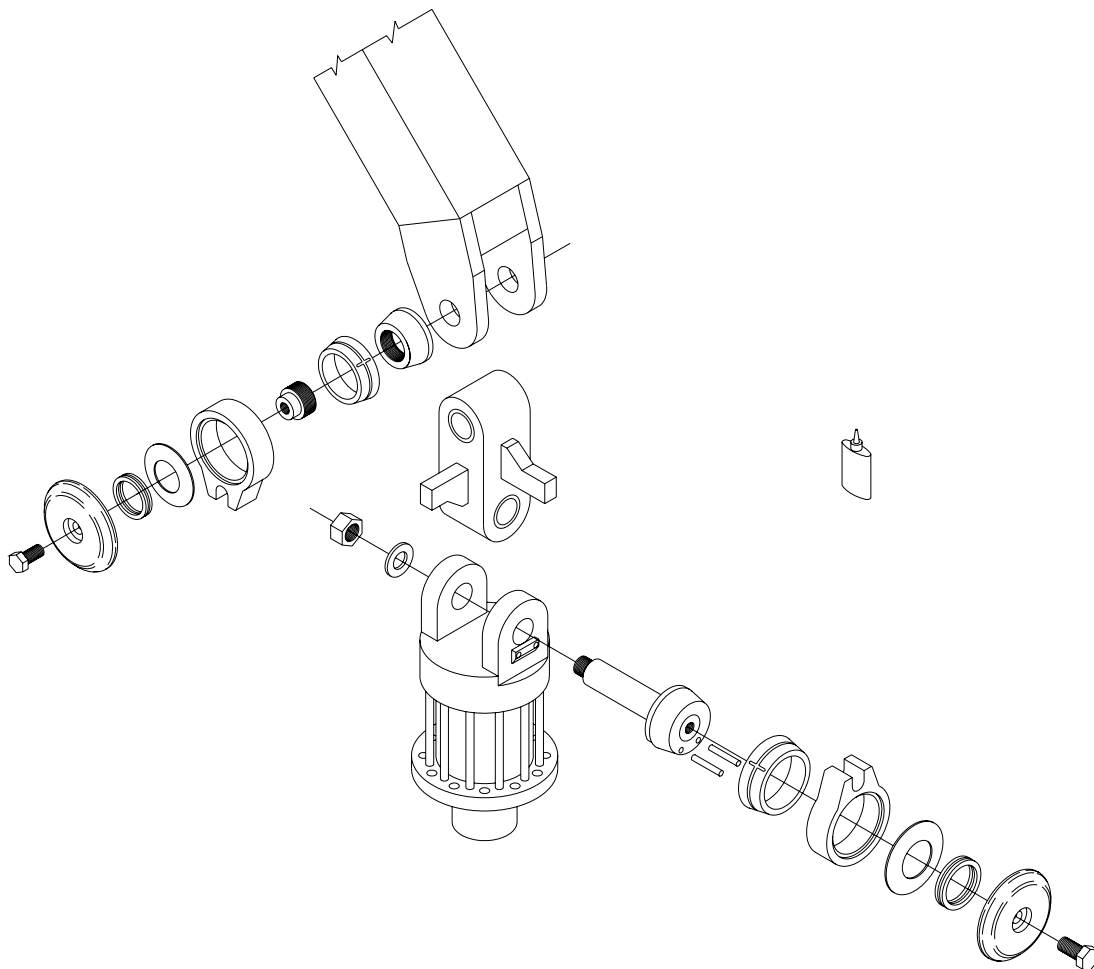
| ITEM | PART# | DESCRIPTION | QTY |
|------|---------|---|-----|
| 1 | B3350-1 | SNUBBER ASSEMBLY, 35 mm PIN (25mm SLOT) | 1 |
| 2 | B3T-475 | LINK, 80/35 mm – 80/35 mm 190 PIN CENTERS | 1 |
| | B3T-465 | BUSHING, 35 mm I.D. | 4 |

EXTERNAL MOUNT

350 SERIES

B3350-7

EUROPE - USE WITH INDEXATOR ROTATORS GV6, GV11, GV104, GV12
LINK 80 mm WIDE @ ROTATOR EARS, 35 mm BUSHING I.D.
LINK 80 mm WIDE @ CRANE NOSE, 35 mm BUSHING I.D.



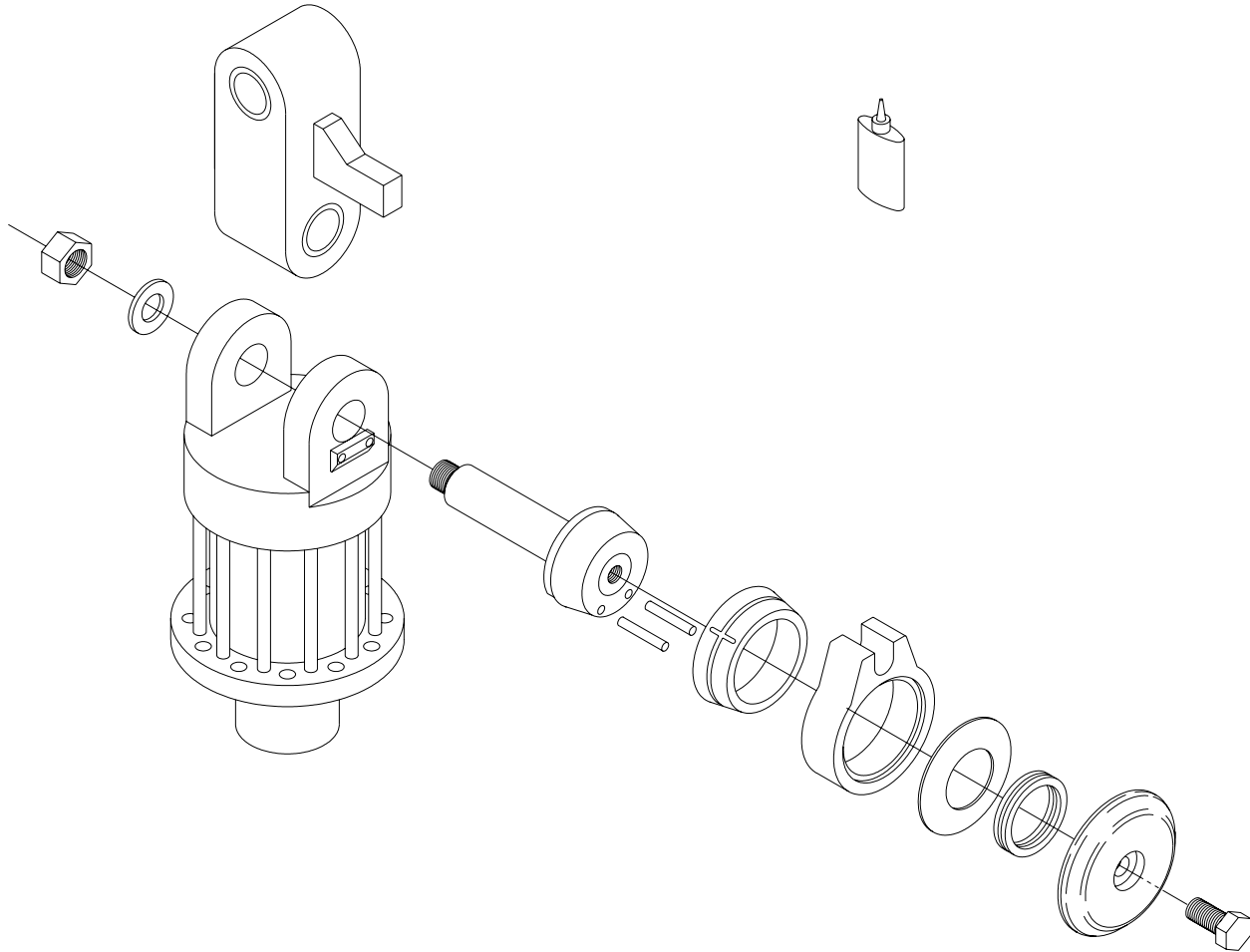
| ITEM | PART# | DESCRIPTION | QTY |
|------|---------|---|-----|
| 1 | B3350-1 | SNUBBER ASSEMBLY, 35 mm PIN (25mm SLOT) | 1 |
| 2 | B3T-475 | LINK, 80/35 mm – 80/35 mm 190 PIN CENTERS | 1 |
| | B3T-465 | BUSHING, 35 mm I.D. | 4 |
| 3 | B3300-2 | SNUBBER ASEMBLY, WELD ON (25mm SLOT) 16mm BOLT | 1 |

EXTERNAL MOUNT

350 SERIES

B3350- 8

EUROPE - USE WITH INDEXATOR ROTATORS GV6, GV11, GV104, GV12
 LINK 80 mm WIDE @ ROTATOR EARS, 35 mm BUSHING I.D.
 LINK 100 mm WIDE @ CRANE NOSE, 45 mm BUSHING I.D.
 1 DIRECTION, SIDE TO SIDE



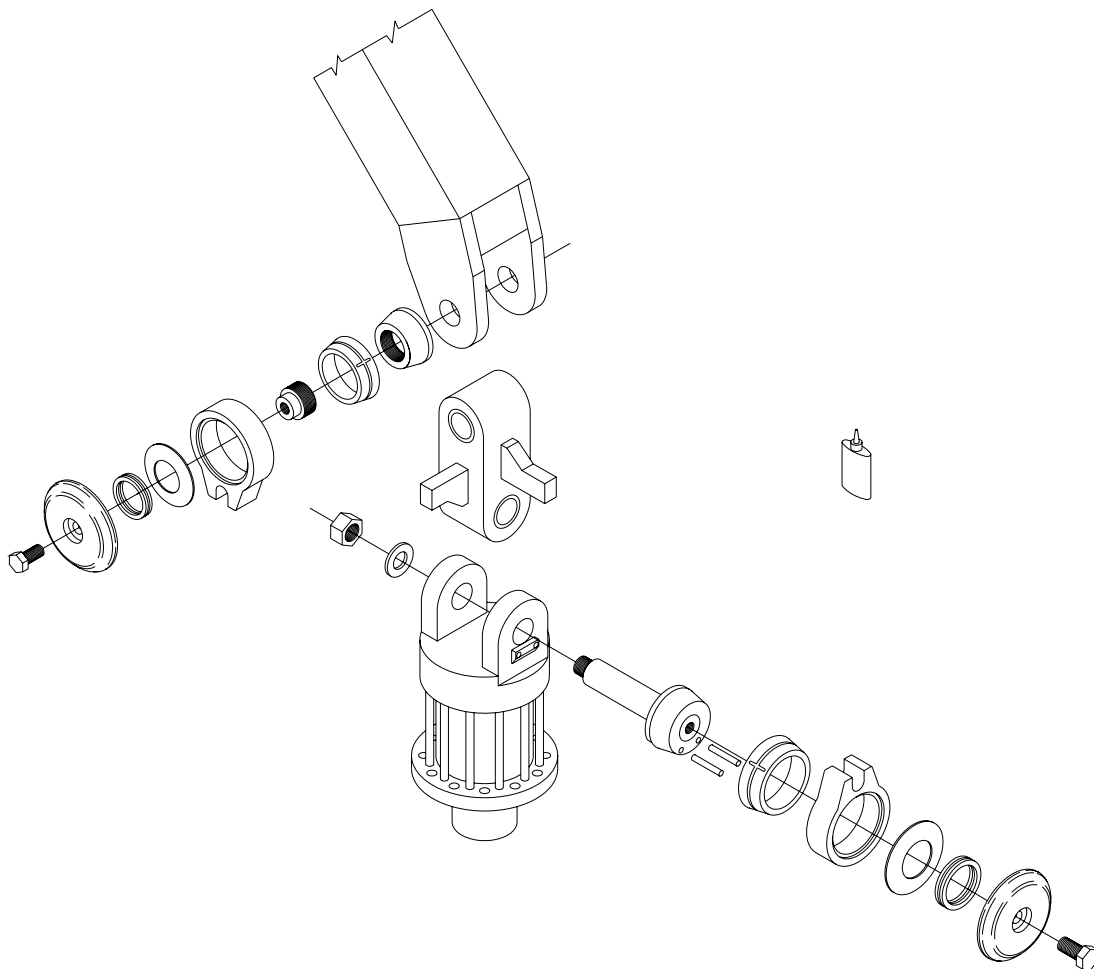
| ITEM | PART# | DESCRIPTION | QTY |
|------|---------|--|-----|
| 1 | B3350-1 | SNUBBER ASSEMBLY, 35 mm PIN (25mm SLOT) | 1 |
| 2 | B3T-480 | LINK, 80/35 mm – 100/45 mm 190 PIN CENTERS | 1 |
| | B3T-465 | BUSHING, 35 mm I.D. | 2 |
| | B3T-470 | BUSHING, 45 mm I.D. | 2 |

EXTERNAL MOUNT

350 SERIES

B3350- 9

EUROPE - USE WITH INDEXATOR ROTATORS GV6, GV11, GV104, GV12
LINK 80 mm WIDE @ ROTATOR EARS, 35 mm BUSHING I.D.
LINK 100 mm WIDE @ CRANE NOSE, 45 mm BUSHING I.D.



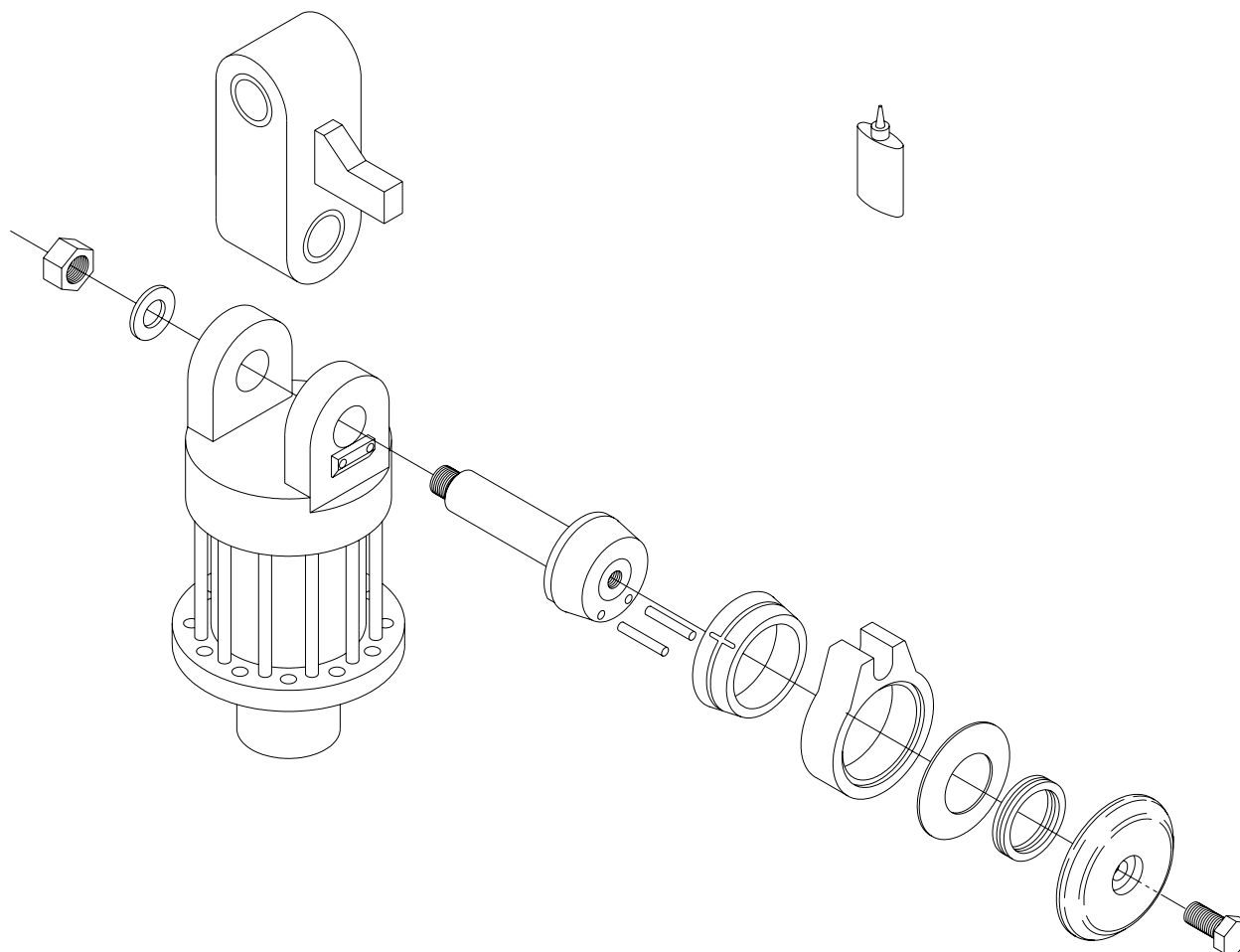
| ITEM | PART# | DESCRIPTION | QTY |
|------|---------|---|-----|
| 1 | B3350-1 | SNUBBER ASSEMBLY, 35 mm PIN (25mm SLOT) | 1 |
| 2 | B3T-480 | LINK, 80/35 mm – 100/45 mm 190 PIN CENTERS | 1 |
| | B3T-465 | BUSHING, 35 mm I.D. | 2 |
| | B3T-470 | BUSHING, 45 mm I.D. | 2 |
| 3 | B3300-2 | SNUBBER ASEMBLY, WELD ON (25mm SLOT) 16mm BOLT | 1 |

EXTERNAL MOUNT

350 SERIES

B3350-10

NORTH AMERICA - USE WITH INDEXATOR ROTATORS GV6, GV11, GV104, GV12
 LINK 80 mm WIDE @ ROTATOR EARS, 35 mm BUSHING I.D.
 LINK 80 mm WIDE @ CRANE NOSE, 45 mm BUSHING I.D.
 1 DIRECTION, SIDE TO SIDE



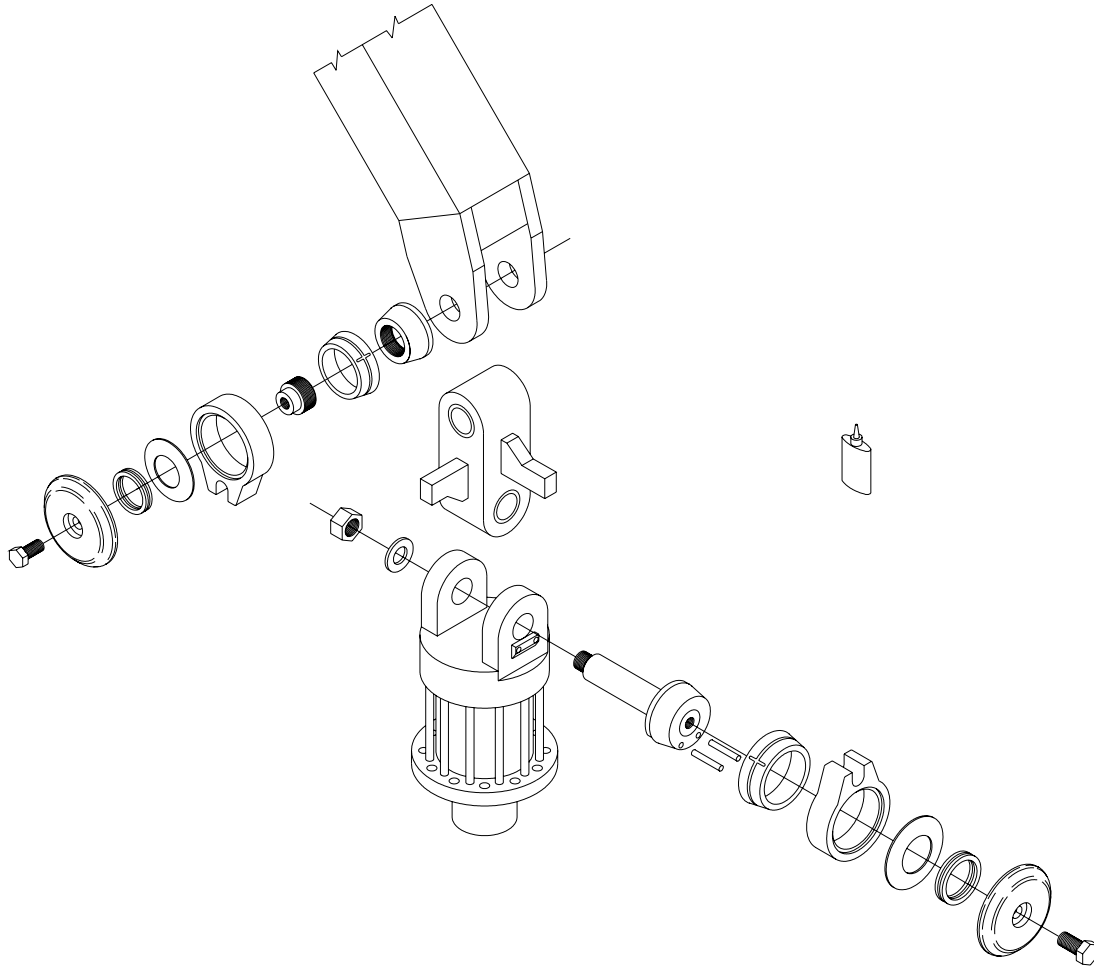
| ITEM | PART# | DESCRIPTION | QTY |
|------|---------|---|-----|
| 1 | B3350 | SNUBBER ASSEMBLY, 35 mm PIN (1.032" SLOT) | 1 |
| 2 | B3T-580 | LINK, 80/35 mm – 80/45 mm 190 PIN CENTERS | 1 |
| | B3T-465 | BUSHING, 35 mm I.D. | 4 |

EXTERNAL MOUNT

350 SERIES

B3350-11

NORTH AMERICA - USE WITH INDEXATOR ROTATORS GV6, GV11, GV104, GV12
 LINK 80 mm WIDE @ ROTATOR EARS, 35 mm BUSHING I.D.
 LINK 80 mm WIDE @ CRANE NOSE, 45 mm BUSHING I.D.



| ITEM | PART# | DESCRIPTION | QTY |
|------|---------|---|-----|
| 1 | B3350 | SNUBBER ASSEMBLY, 35 mm PIN (1.032" SLOT) | 1 |
| 2 | B3T-580 | LINK, 80/35 mm – 80/45 mm 190 PIN CENTERS | 1 |
| | B3T-465 | BUSHING, 35 mm I.D. | 2 |
| | B3T-470 | BUSHING, 45 mm I.D. | 2 |
| 3 | B3300 | SNUBBER ASEMBLY, WELD ON (1.032" SLOT) 16mm BOLT | 1 |