

# **S**ECTION **6-1** **650 SERIES**

|       |  |
|-------|--|
| 6-1-2 | <a href="#">Snubber assembly - parts</a>             |
| 6-1-3 | <a href="#">Mounting and operational instruction</a> |
| 6-1-4 | <a href="#">B3650</a>                                |
| 6-1-6 | <a href="#">B3650-1</a>                              |



## INTERNAL MOUNT

### MOUNTING AND OPERATIONAL INSTRUCTIONS

#### ROTATE YOKE MOUNT

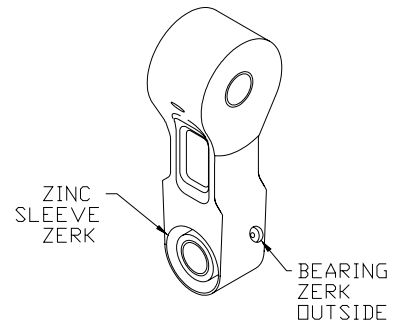
- 1) Remove original pins from rotator and crane nose, remove link.
- 2) Pack bearing with grease and install.
- 3) Grease friction sleeve, B3T-660 ZINC only. B3T-895 COMPOSITE to be dry fit. Install core, for maximum component life, a tight fit core to rotator top is necessary, build-up if required. Install concave side of spring-washer towards core, insert link assembly between ears of rotator.
- 4) Grease pin and install with the head end of pin mating with original pin lock on rotator.
- 5) Lubricate tension collar, inside and out with never seize – install collar and nut.

#### CRANE NOSE MOUNT

- 1) Install link and re-use original pin, a worn pin must be replaced with a new O.E.M. crane tip pin.
- 2) For 100 mm. wide crane tip install spacers provided. Weld spacers to crane tip after installation.

#### SERVICE AND ADJUSTMENT

- To adjust, tighten nut against tension collar.
- Composite sleeve B3T-895 – maintenance free - lightly adjust for first 1/2 hour to “run-in” sleeve – then adjust to desired attachment control.
- Maximum adjustment of nut is 3/4 turn after nut has contacted tension collar.
- Gease zinc sleeve, B3T-660 every 10 hours.



**\*Load must be maintained on core at all times to avoid damage to core or link\***

Greases with 5% - 6% MOLY are recommended:  
Military Spec. MIL G23549C  
-Lubriplate 176           5<sup>0</sup>F./-15<sup>0</sup>C.  
-Lubriplate 3000         15<sup>0</sup>F./-9.5<sup>0</sup>C.  
-Lubriplate 3000w       -30<sup>0</sup>F./-34.5<sup>0</sup>C.  
-or EQUIVALENT

#### CAUTION:

Only tension snubber to maintain adequate control of attachment, dependant upon application and attachment weight.  
Over tensioning of snubber reduces friction sleeve life.



**INTERNAL MOUNT**

**SINGLE**

**B3650**

USE WITH INDEXATOR ROTATORS  
GV4E, GV6, GV10, GV11, GV12 & GV104  
CRANE NOSE – 45 mm. PIN – 80 mm. WIDE BETWEEN EARS

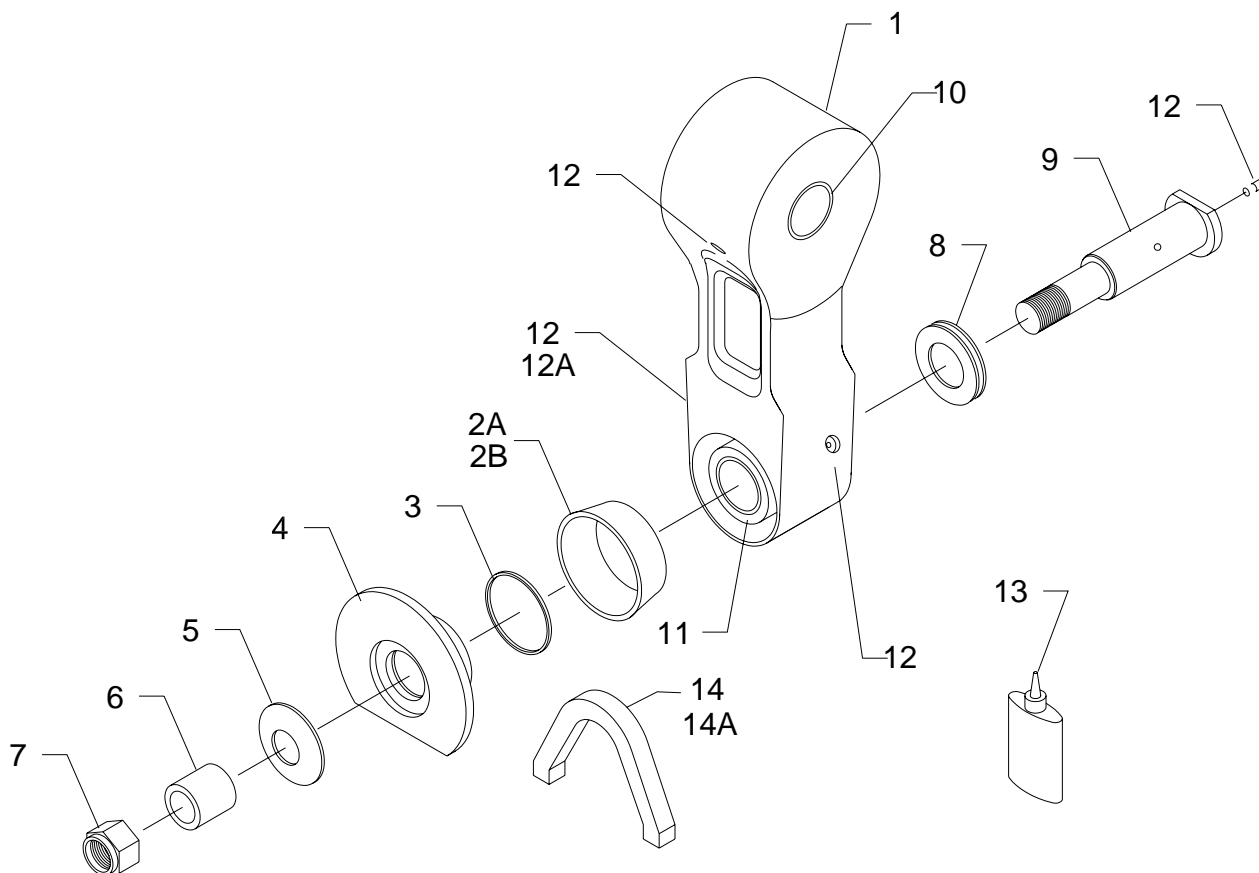
| ITEM | PART#    | DESCRIPTION                           | QTY |
|------|----------|---------------------------------------|-----|
| 1    | B3T-650  | SINGLE LINK                           | 1   |
| 2A   | B3T-895  | FRICTION SLEEVE – COMPOSITE           | 1   |
| 2B   | B3T-660  | FRICTION SLEEVE – ZINC                | 1   |
| 3    | B3T-665  | O-RING USE WITH COMPOSITE SLEEVE      | 1   |
| 4    | B3T-655  | CORE – WELD TO BOOMERANG              | 1   |
| 5    | B3T-680  | SPRING                                | 1   |
| 6    | B3T-685  | TENSION COLLAR                        | 1   |
| 7    | B3T-690  | NUT 1 1/8" – 12 NYLOCK                | 1   |
| 8    | B3T-675  | BEARING                               | 1   |
| 9    | B3T-670  | PIN                                   | 1   |
| 10   | B3T-470  | BUSHING 45 mm. I.D.                   | 2   |
| 11   | B3T-695  | BUSHING 35 mm. I.D.                   | 1   |
| 12   | B3T-1130 | ZERK 1/4-28 STRAIGHT                  | 4/3 |
| 12A  | B3T-1190 | PLUG – USE WITH COMPOSITE SLEEVE ONLY | 1   |
| 13   | B3T-575  | SLEEVE RETAINER                       | 1   |
| 14   | B3T-1390 | BOOMERANG GV11 – GV12 WELD TO CORE    | 1   |
| 14A  | B3T-1415 | BOOMERANG GV4E – WELD TO CORE         | 1   |

**INTERNAL MOUNT**

**SINGLE**

**B3650-1**

USE WITH INDEXATOR ROTATORS  
GV4E, GV6, GV10, GV11, GV12 & GV104  
CRANE NOSE – 35 mm. PIN – 80 mm. WIDE BETWEEN EARS



**INTERNAL MOUNT**

**SINGLE**

**B3650-1**

USE WITH INDEXATOR ROTATORS  
GV4E, GV6, GV10, GV11, GV12 & GV104  
CRANE NOSE – 35 mm. PIN – 80 mm. WIDE BETWEEN EARS

| ITEM | PART#    | DESCRIPTION                           | QTY |
|------|----------|---------------------------------------|-----|
| 1    | B3T-650  | SINGLE LINK                           | 1   |
| 2A   | B3T-895  | FRICTION SLEEVE – COMPOSITE           | 1   |
| 2B   | B3T-660  | FRICTION SLEEVE – ZINC                | 1   |
| 3    | B3T-665  | O-RING – USE WITH COMPOSITE SLEEVE    | 1   |
| 4    | B3T-655  | CORE – WELD TO BOOMERANG              | 1   |
| 5    | B3T-680  | SPRING                                | 1   |
| 6    | B3T-685  | TENSION COLLAR                        | 1   |
| 7    | B3T-690  | NUT 1 1/8" – 12 NYLOCK                | 1   |
| 8    | B3T-675  | BEARING                               | 1   |
| 9    | B3T-670  | PIN                                   | 1   |
| 10   | B3T-810  | BUSHING 35 mm. I.D.                   | 2   |
| 11   | B3T-695  | BUSHING 35 mm. I.D.                   | 1   |
| 12   | B3T-1130 | ZERK 1/4-28 STRAIGHT                  | 4/3 |
| 12A  | B3T-1190 | PLUG – USE WITH COMPOSITE SLEEVE ONLY | 1   |
| 13   | B3T-575  | SLEEVE RETAINER                       | 1   |
| 14   | B3T-1390 | BOOMERANG GV11 – GV12 - WELD TO CORE  | 1   |
| 14A  | B3T-1415 | BOOMERANG GV4E - WELD TO CORE         | 1   |